

North Fork St. Lucie Aquatic Preserve
SEACAR Habitat Analyses

Last compiled on 08 January, 2025

Contents

Funding & Acknowledgements	2
Threshold Filtering	2
Value Qualifiers	3
Water Column	5
Seasonal Kendall-Tau Analysis	5
Water Quality - Discrete	5
Chlorophyll a, Corrected for Pheophytin - Discrete Water Quality	6
Chlorophyll a, Uncorrected for Pheophytin - Discrete Water Quality	7
Dissolved Oxygen - Discrete Water Quality	9
pH - Discrete Water Quality	11
Salinity - Discrete Water Quality	13
Secchi Depth - Discrete Water Quality	15
Total Nitrogen - Discrete Water Quality	17
Total Phosphorus - Discrete Water Quality	20
Total Suspended Solids - Discrete Water Quality	22
Turbidity - Discrete Water Quality	24
Water Temperature - Discrete Water Quality	26
Water Quality - Continuous	29
References	30

Funding & Acknowledgements

The data used in this analysis is from the Export Standardized Tables in the SEACAR Data Discovery Interface (DDI). Documents and information available through the SEACAR DDI are owned by the data provider(s) and users are expected to provide appropriate credit following accepted citation formats. Users are encouraged to access data to maximize utilization of gained knowledge, reducing redundant research and facilitating partnerships and scientific innovation.

With respect to documents and information available from SEACAR DDI, neither the State of Florida nor the Florida Department of Environmental Protection makes any warranty, expressed or implied, including the warranties of merchantability and fitness for a particular purpose arising out of the use or inability to use the data, or assumes any legal liability or responsibility for the accuracy, completeness, or usefulness of any information, apparatus, product, or process disclosed, or represents that its use would not infringe privately owned rights.

This report was funded in part, through a grant agreement from the Florida Department of Environmental Protection, Florida Coastal Management Program, by a grant provided by the Office for Coastal Management under the Coastal Zone Management Act of 1972, as amended, National Oceanic and Atmospheric Administration. The views, statements, findings, conclusions and recommendations expressed herein are those of the author(s) and do not necessarily reflect the views of the State of Florida, NOAA or any of their sub agencies.

Published: 2025-01-08



Threshold Filtering

Threshold filters, following the guidance of Florida Department of Environmental Protection's (*FDEP*) Division of Environmental Assessment and Restoration (*DEAR*) are used to exclude specific results values from the SEACAR Analysis. Based on the threshold filters, Quality Assurance / Quality Control (*QAQC*) Flags are inserted into the *SEACAR_QAQCFlagCode* and *SEACAR_QAQC_Description* columns of the export data. The *Include* column indicates whether the *QAQC* Flag will also indicate that data are excluded from analysis. No data are excluded from the data export, but the analysis scripts can use the *Include* column to exclude data (1 to include, 0 to exclude).

Table 1: Continuous Water Quality threshold values

<i>Parameter Name</i>	<i>Units</i>	<i>Low Threshold</i>	<i>High Threshold</i>
Dissolved Oxygen	mg/L	-0.000001	50
Dissolved Oxygen Saturation	%	-0.000001	500
Salinity	ppt	-0.000001	70
Turbidity	NTU	-0.000001	4000
Water Temperature	Degrees C	-5.000000	45
pH	None	2.000000	14

Table 2: Discrete Water Quality threshold values

<i>Parameter Name</i>	<i>Units</i>	<i>Low Threshold</i>	<i>High Threshold</i>
Ammonia, Un-ionized (NH3)	mg/L	-	-
Ammonium, Filtered (NH4)	mg/L	-	-
Chlorophyll a, Corrected for Pheophytin	ug/L	-	-
Chlorophyll a, Uncorrected for Pheophytin	ug/L	-	-
Colored Dissolved Organic Matter	PCU	-	-

<i>Parameter Name</i>	<i>Units</i>	<i>Low Threshold</i>	<i>High Threshold</i>
Dissolved Oxygen	mg/L	-0.000001	25
Dissolved Oxygen Saturation	%	-0.000001	310
Fluorescent Dissolved Organic Matter	QSE	-	-
Light Extinction Coefficient	m ⁻¹	-	-
NO ₂ +3, Filtered	mg/L	-	-
Nitrate (NO ₃)	mg/L	-	-
Nitrite (NO ₂)	mg/L	-	-
Nitrogen, organic	mg/L	-	-
Phosphate, Filtered (PO ₄)	mg/L	-	-
Salinity	ppt	-0.000001	70
Secchi Depth	m	0.000001	50
Specific Conductivity	mS/cm	0.005000	100
Total Kjeldahl Nitrogen	mg/L	-	-
Total Nitrogen	mg/L	-	-
Total Nitrogen	mg/L	-	-
Total Phosphorus	mg/L	-	-
Total Suspended Solids	mg/L	-	-
Turbidity	NTU	-	-
Water Temperature	Degrees C	3.000000	40
pH	None	2.000000	13

Table 3: Quality Assurance Flags inserted based on threshold checks listed in Table 1 and 2

<i>SEACAR QAQC Description</i>	<i>Include</i>	<i>SEACAR QAQCFlagCode</i>
Exceeds maximum threshold	0	2Q
Below minimum threshold	0	4Q
Within threshold tolerance	1	6Q
No defined thresholds for this parameter	1	7Q

Value Qualifiers

Value qualifier codes included within the data are used to exclude certain results from the analysis. The data are retained in the data export files, but the analysis uses the *Include* column to filter the results.

STORET and WIN value qualifier codes

Value qualifier codes from *STORET* and *WIN* data are examined with the database and used to populate the *Include* column in data exports.

Table 4: Value Qualifier codes excluded from analysis

<i>Qualifier Source</i>	<i>Value Qualifier</i>	<i>Include</i>	<i>MDL</i>	<i>Description</i>
STORET-WIN	H	0	0	Value based on field kit determination; results may not be accurate
STORET-WIN	J	0	0	Estimated value
STORET-WIN	V	0	0	Analyte was detected at or above method detection limit
STORET-WIN	Y	0	0	Lab analysis from an improperly preserved sample; data may be inaccurate

Discrete Water Quality Value Qualifiers

The following value qualifiers are highlighted in the Discrete Water Quality section of this report. An exception is made for **Program 476 - Charlotte Harbor Estuaries Volunteer Water Quality Monitoring Network** and data flagged with Value Qualifier **H** are included for this program only.

H - Value based on field kit determination; results may not be accurate. This code shall be used if a field screening test (e.g., field gas chromatograph data, immunoassay, or vendor-supplied field kit) was used to generate the value and the field kit or method has not been recognized by the Department as equivalent to laboratory methods.

I - The reported value is greater than or equal to the laboratory method detection limit but less than the laboratory practical quantitation limit.

Q - Sample held beyond the accepted holding time. This code shall be used if the value is derived from a sample that was prepared or analyzed after the approved holding time restrictions for sample preparation or analysis.

S - Secchi disk visible to bottom of waterbody. The value reported is the depth of the waterbody at the location of the Secchi disk measurement.

U - Indicates that the compound was analyzed for but not detected. This symbol shall be used to indicate that the specified component was not detected. The value associated with the qualifier shall be the laboratory method detection limit. Unless requested by the client, less than the method detection limit values shall not be reported

Systemwide Monitoring Program (SWMP) value qualifier codes

Value qualifier codes from the *SWMP* continuous program are examined with the database and used to populate the *Include* column in data exports. *SWMP* Qualifier Codes are indicated by *QualifierSource=SWMP*.

Table 5: SWMP Value Qualifier codes

<i>Qualifier Source</i>	<i>Value Qualifier</i>	<i>Include</i>	<i>Description</i>
SWMP	-1	Yes	Optional parameter not collected
SWMP	-2	No	Missing data
SWMP	-3	No	Data rejected due to QA/QC
SWMP	-4	No	Outside low sensor range
SWMP	-5	No	Outside high sensor range
SWMP	0	Yes	Passed initial QA/QC checks
SWMP	1	No	Suspect data
SWMP	2	Yes	Reserved for future use
SWMP	3	Yes	Calculated data: non-vented depth/level sensor correction for changes in barometric pressure
SWMP	4	Yes	Historical: Pre-auto QA/QC
SWMP	5	Yes	Corrected data

Water Column

The water column habitat extends from the water's surface to the bottom sediments, and it's where fish, dolphins, crabs and people swim! So much life makes its home in the water column that the health of marine and coastal ecosystems, as well as human economies, depend on the condition of this vulnerable habitat. Local patterns of rainfall, temperature, winds and currents can rapidly change the condition of the water column, while global influences such as [El Niño/La Niña](#), large-scale fluctuation in sea temperatures and climate change can have long-term effects. Inputs from the prosperity of our day-to-day lives including farming, mining and forestry, and emissions from power generation, automobiles and water treatment can also alter the health of the water column. Acting alone or together, each input can have complex and lasting effects on habitats and ecosystems.

SEACAR evaluates water column health with several essential parameters. These include nutrient surveys of nitrogen and phosphorus, and water quality assessments of salinity, dissolved oxygen, pH, and water temperature. Water clarity is evaluated with Secchi depth, turbidity, levels of chlorophyll a, total suspended solids, and colored dissolved organic matter. Additionally, the richness of nekton is indicated by the abundance of free-swimming fishes and macroinvertebrates like crabs and shrimps.

Seasonal Kendall-Tau Analysis

Indicators must have a minimum of five to ten years, depending on the habitat, of data within the geographic range of the analysis to be included in the analysis. Ten years of data are required for discrete parameters, and five years of data are required for continuous parameters. If there are insufficient years of data, the number of years of data available will be noted and labeled as “insufficient data to conduct analysis”. Further, for the preferred Seasonal Kendall-Tau test, there must be data from at least two months in common across at least two consecutive years within the RCP managed area being analyzed. Values that pass both of these tests will be included in the analysis and be labeled as *Use_In_Analysis* = **TRUE**. Any that fail either test will be excluded from the analyses and labeled as *Use_In_Analysis* = **FALSE**. The points for all Water Column plots displayed in this section are monthly averages. Trend significance will be denoted as “Significant Trend” (when $p < 0.05$), or “Non-significant Trend” (when $p \geq 0.05$). Any parameters with insufficient data to perform Seasonal Kendall-Tau test will have their monthly averages plotted without a corresponding trend line.

Water Quality - Discrete

The following files were used in the discrete analysis:

- *Combined_WQ_WC_NUT_Chlorophyll_a_corrected_for_pheophytin-2024-Dec-08.txt*
- *Combined_WQ_WC_NUT_Chlorophyll_a_uncorrected_for_pheophytin-2024-Dec-08.txt*
- *Combined_WQ_WC_NUT_Colored_dissolved_organic_matter_CDOM-2024-Dec-08.txt*
- *Combined_WQ_WC_NUT_Dissolved_Oxygen-2024-Dec-08.txt*
- *Combined_WQ_WC_NUT_Dissolved_Oxygen_Saturation-2024-Dec-08.txt*
- *Combined_WQ_WC_NUT_pH-2024-Dec-08.txt*
- *Combined_WQ_WC_NUT_Salinity-2024-Dec-08.txt*
- *Combined_WQ_WC_NUT_Secchi_Depth-2024-Dec-08.txt*
- *Combined_WQ_WC_NUT_Total_Nitrogen-2024-Dec-08.txt*
- *Combined_WQ_WC_NUT_Total_Phosphorus-2024-Dec-08.txt*
- *Combined_WQ_WC_NUT_Total_Suspended_Solids_TSS-2024-Dec-08.txt*
- *Combined_WQ_WC_NUT_Turbidity-2024-Dec-08.txt*
- *Combined_WQ_WC_NUT_Water_Temperature-2024-Dec-08.txt*

Chlorophyll a, Corrected for Pheophytin - Discrete Water Quality

Seasonal Kendall-Tau Trend Analysis

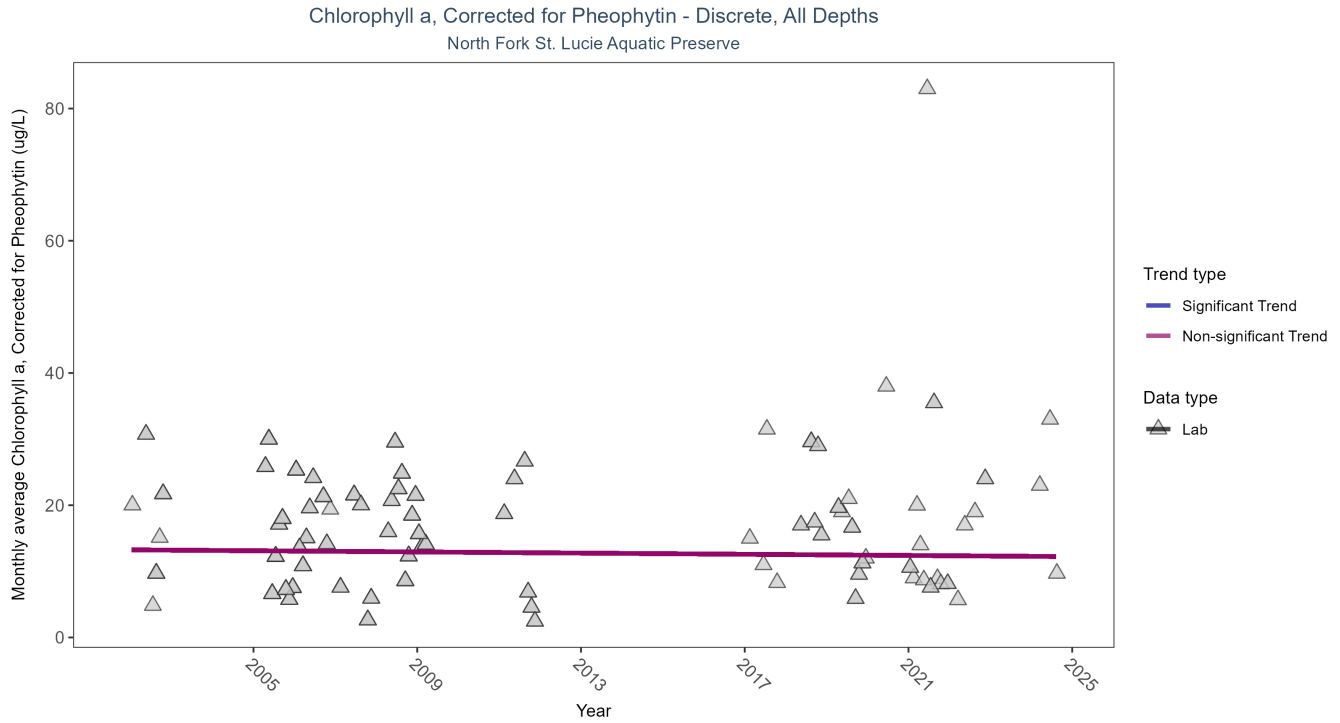


Figure 1: Seasonal Kendall-Tau Results for Chlorophyll a, Corrected for Pheophytin - Discrete

Table 6: Seasonal Kendall-Tau Trend Analysis for Chlorophyll a, Corrected for Pheophytin

RelativeDepth	N-Data	N-Years	Median	Independent	tau	p	SennSlope	SennIntercept	ChiSquared	pChiSquared	Trend
All	371	14	12	TRUE	-0.0265	0.8131	-0.0444	13.2489	17.6486	0.0901	0

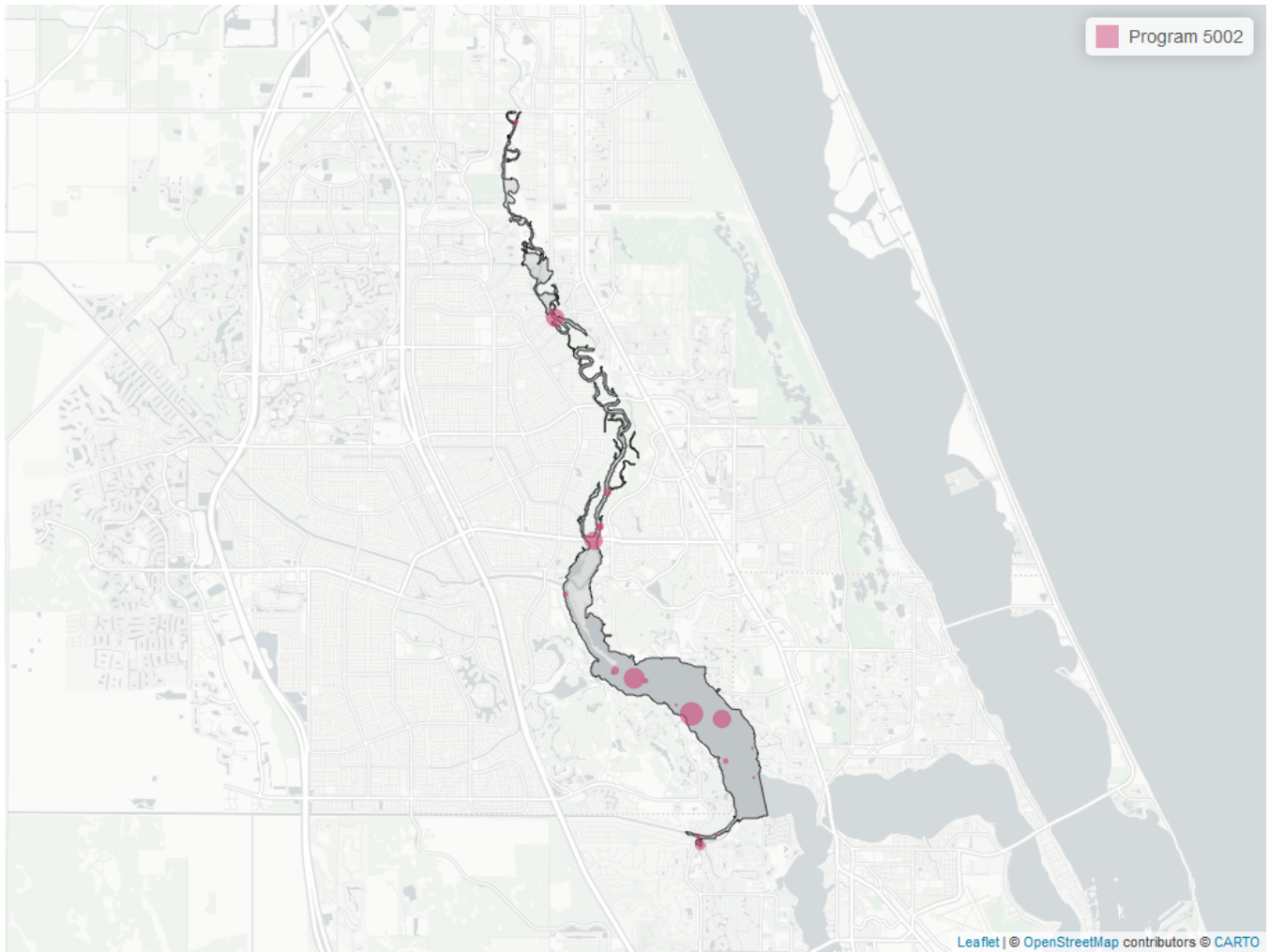


Figure 2: Map showing location of Discrete sampling sites for Chlorophyll a, Corrected for Pheophytin. The bubble size on the maps below reflect the amount of data available at each sampling site.

Table 7: Programs contributing data for Chlorophyll a, Corrected for Pheophytin

<i>ProgramID</i>	<i>N_Data</i>	<i>YearMin</i>	<i>YearMax</i>
5002	372	2002	2024

Program names:

5002 - Florida STORET / WIN¹

**Chlorophyll a, Uncorrected for Pheophytin - Discrete Water Quality
Seasonal Kendall-Tau Trend Analysis**

Chlorophyll a, Uncorrected for Pheophytin - Discrete, All Depths
 North Fork St. Lucie Aquatic Preserve

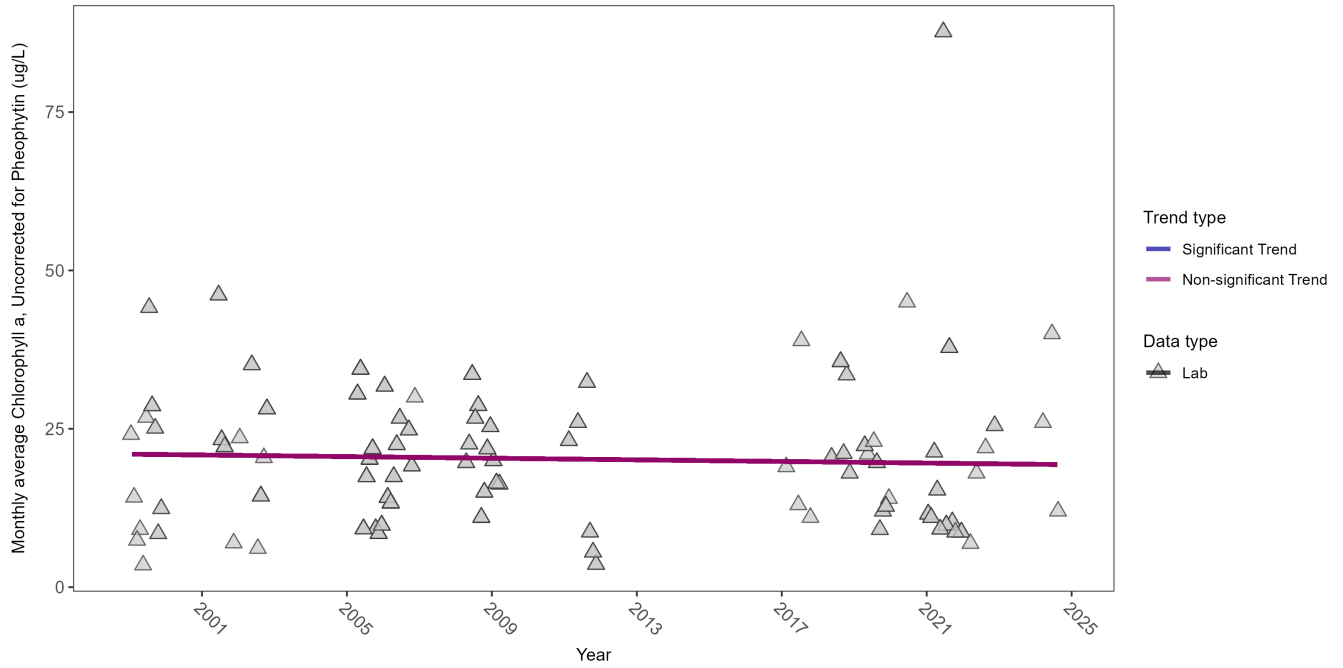


Figure 3: Seasonal Kendall-Tau Results for Chlorophyll a, Uncorrected for Pheophytin - Discrete

Table 8: Seasonal Kendall-Tau Trend Analysis for Chlorophyll a, Uncorrected for Pheophytin

RelativeDepth	N-Data	N-Years	Median	Independent	tau	p	SennSlope	SennIntercept	ChiSquared	pChiSquared	Trend
All	405	15	15	TRUE	-0.0672	0.4756	-0.0638	20.9922	11.9807	0.3651	0

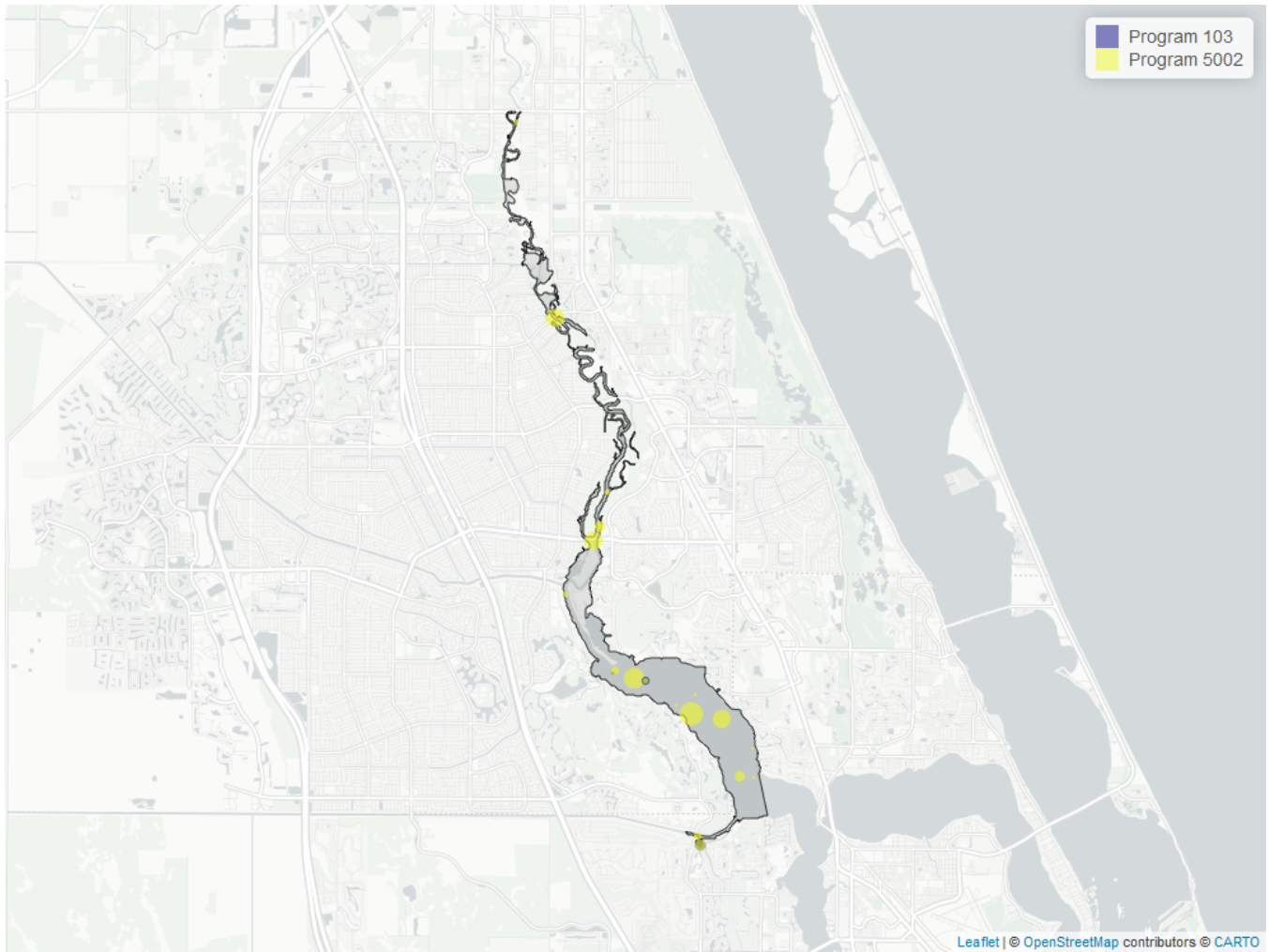


Figure 4: Map showing location of Discrete sampling sites for Chlorophyll a, Uncorrected for Pheophytin. The bubble size on the maps below reflect the amount of data available at each sampling site.

Table 9: Programs contributing data for Chlorophyll a, Uncorrected for Pheophytin

<i>ProgramID</i>	<i>N_Data</i>	<i>YearMin</i>	<i>YearMax</i>
5002	377	1999	2024
103	30	2021	2021

Program names:

103 - EPA STOrage and RETrieval Data Warehouse (STORET)/WQX²
 5002 - Florida STORET / WIN¹

Dissolved Oxygen - Discrete Water Quality

Seasonal Kendall-Tau Trend Analysis

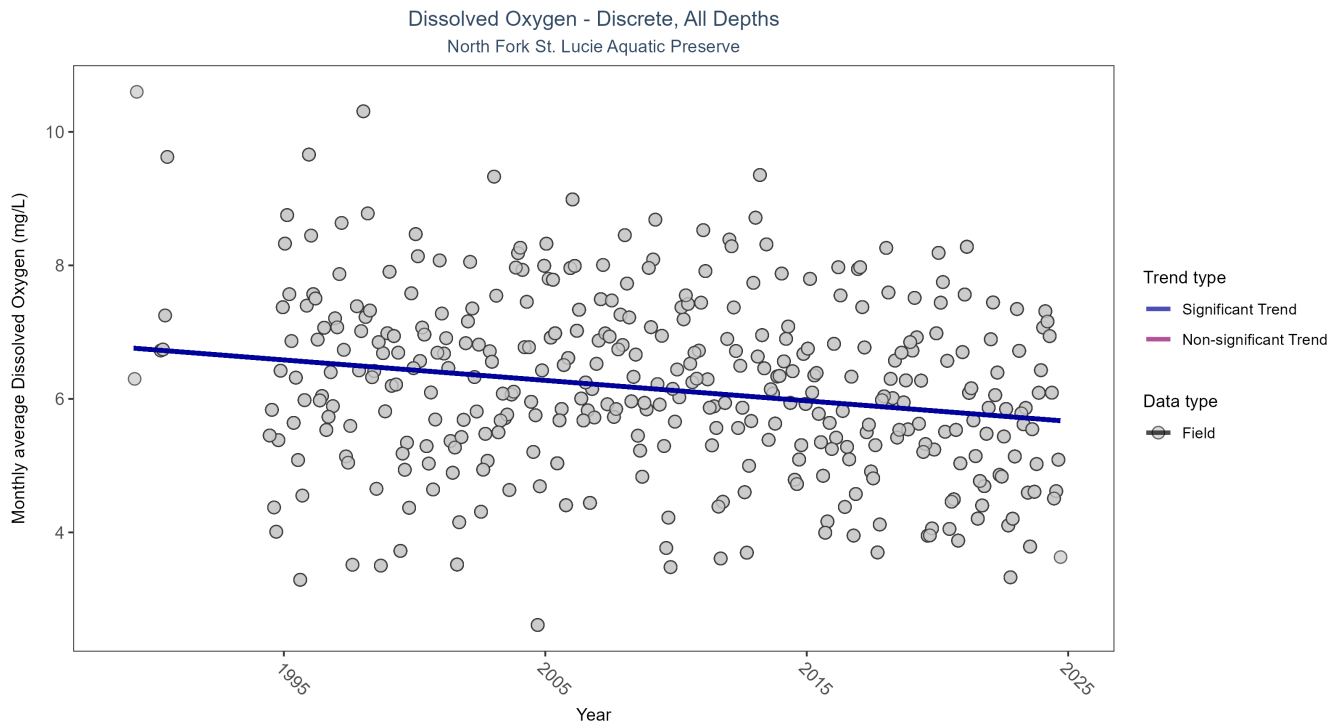


Figure 5: Seasonal Kendall-Tau Results for Dissolved Oxygen - Discrete

Table 10: Seasonal Kendall-Tau Trend Analysis for Dissolved Oxygen

RelativeDepth	N-Data	N-Years	Median	Independent	tau	p	SennSlope	SennIntercept	ChiSquared	pChiSquared	Trend
All	7094	33	6.19	TRUE	-0.2221	0	-0.0306	6.7673	15.3512	0.167	-1

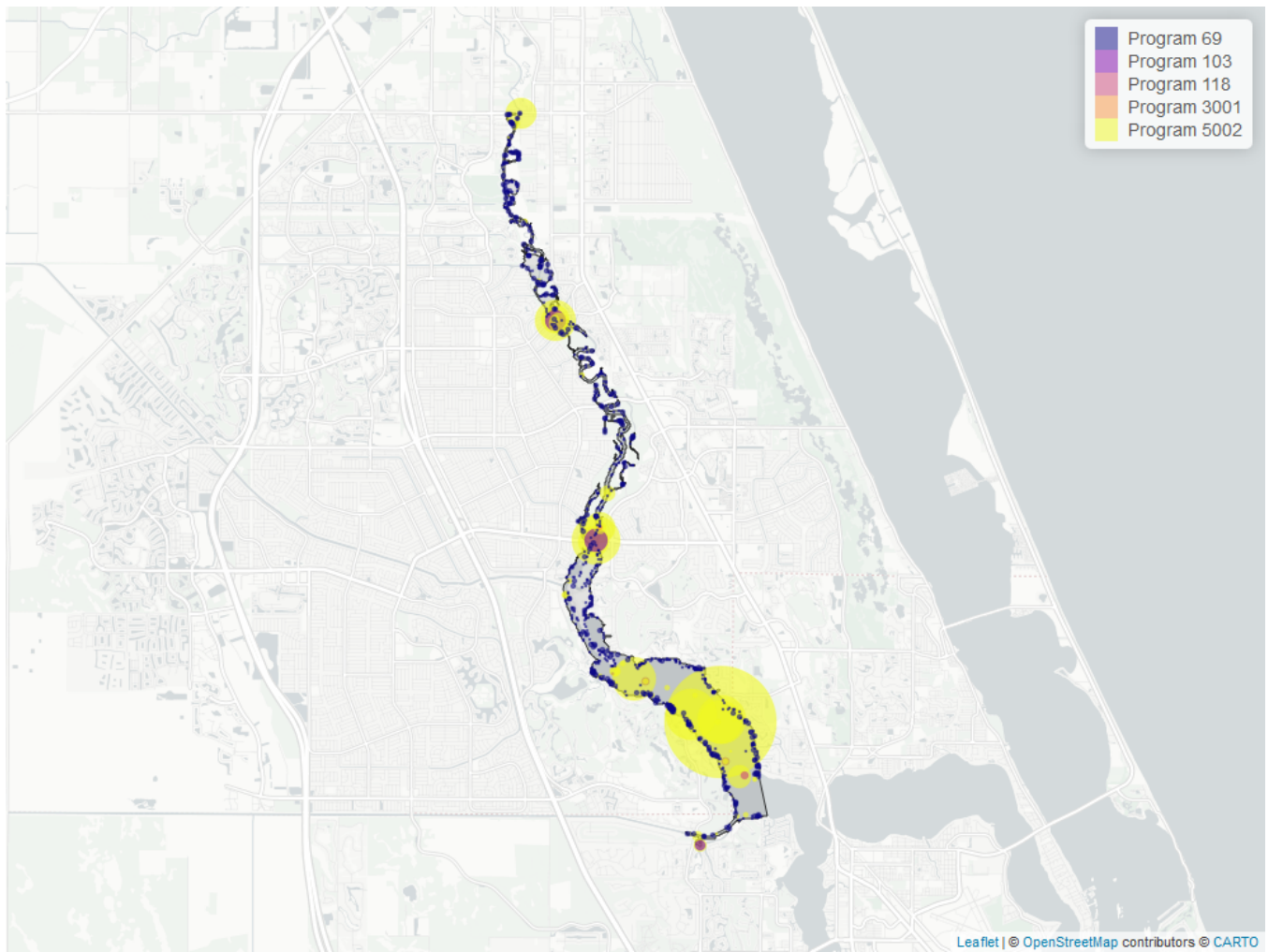


Figure 6: Map showing location of Discrete sampling sites for Dissolved Oxygen. The bubble size on the maps below reflect the amount of data available at each sampling site.

Table 11: Programs contributing data for Dissolved Oxygen

<i>ProgramID</i>	<i>N_Data</i>	<i>YearMin</i>	<i>YearMax</i>
5002	4897	1989	2024
69	2160	1998	2022
103	190	2020	2021
118	7	2015	2015
3001	5	2009	2009

Program names:

69 - Fisheries-Independent Monitoring (FIM) Program³

103 - EPA STORage and RETrieval Data Warehouse (STORET)/WQX²

118 - National Aquatic Resource Surveys, National Coastal Condition Assessment⁴

3001 - Lagoon Watch (Formerly Marine Discovery Center)⁵

5002 - Florida STORET / WIN¹

pH - Discrete Water Quality

Seasonal Kendall-Tau Trend Analysis

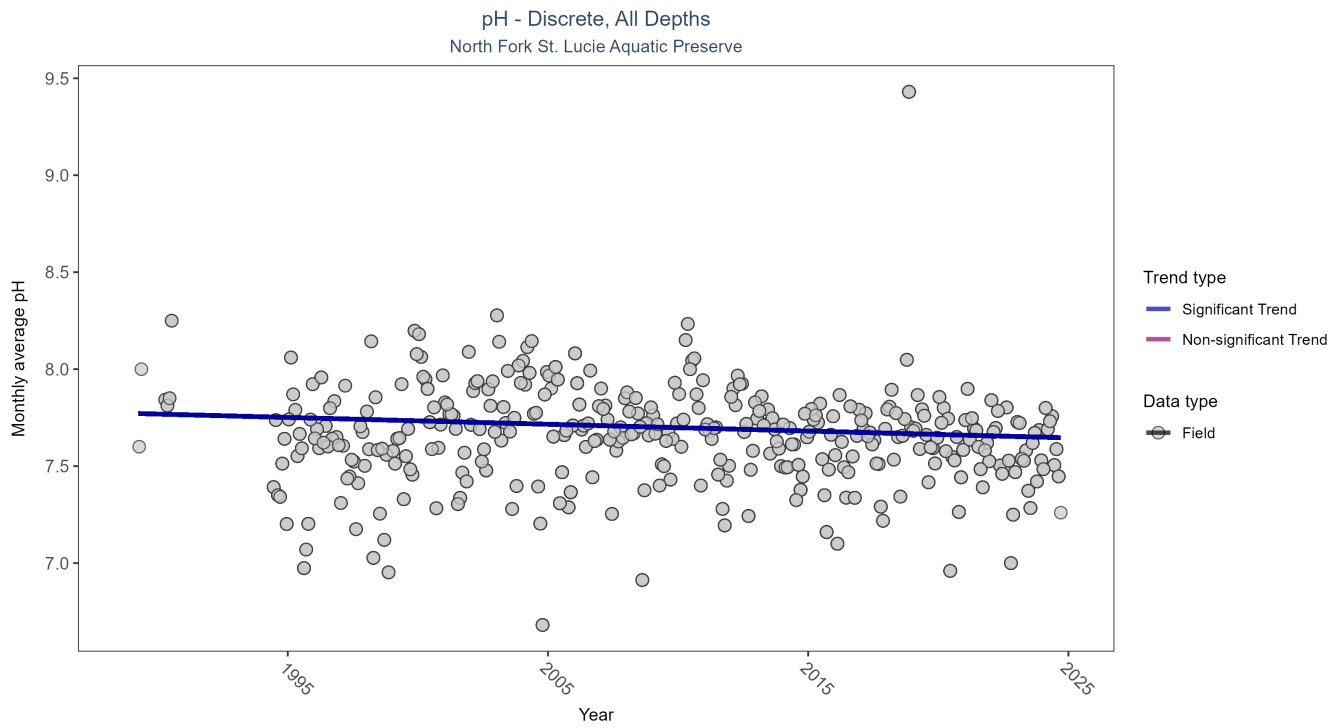


Figure 7: Seasonal Kendall-Tau Results for pH - Discrete

Table 12: Seasonal Kendall-Tau Trend Analysis for pH

RelativeDepth	N-Data	N-Years	Median	Independent	tau	p	SennSlope	SennIntercept	ChiSquared	pChiSquared	Trend
All	7149	33	7.64	TRUE	-0.1134	0.0021	-0.0035	7.7721	8.888	0.6322	-1

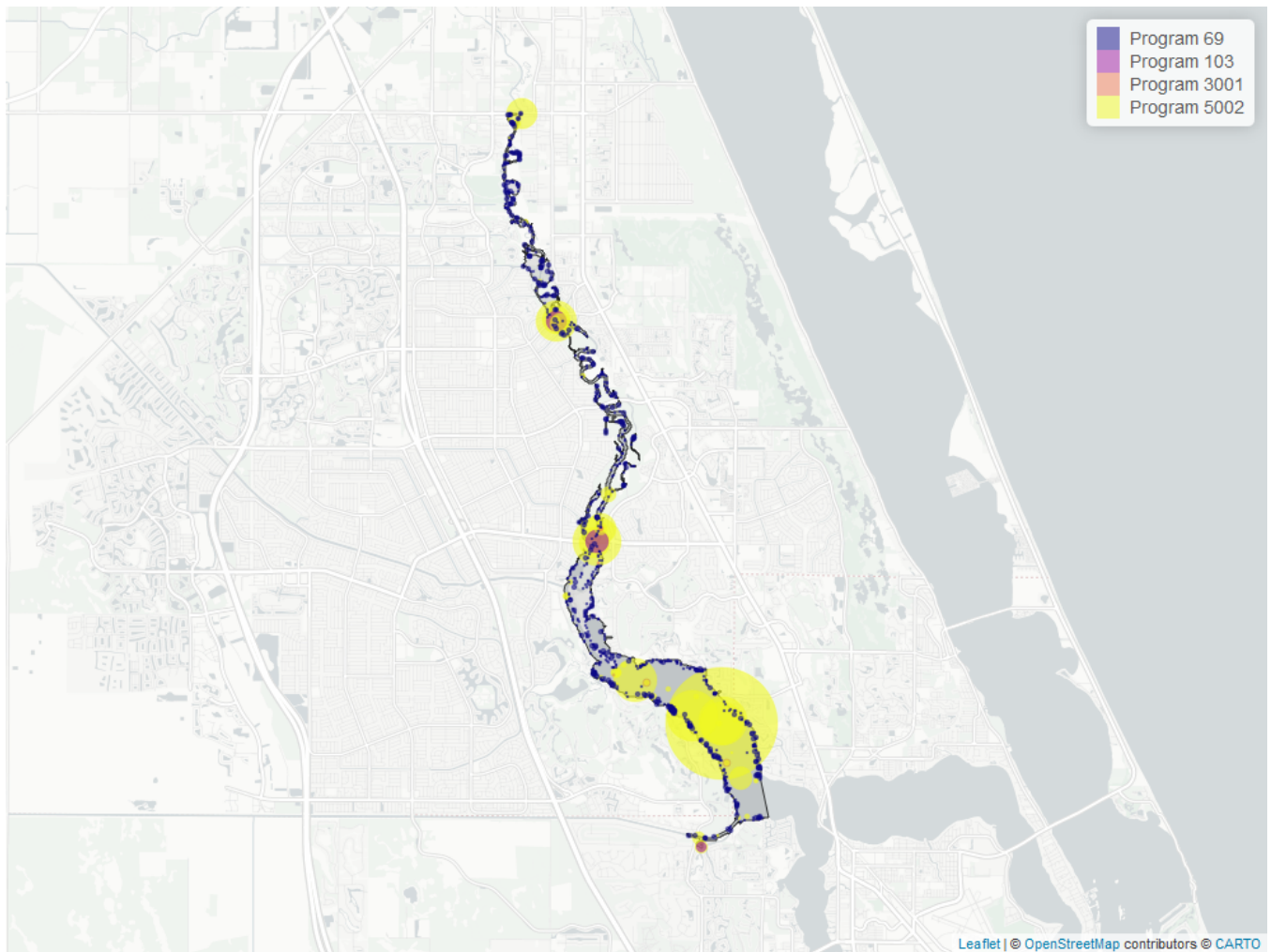


Figure 8: Map showing location of Discrete sampling sites for pH. The bubble size on the maps below reflect the amount of data available at each sampling site.

Table 13: Programs contributing data for pH

<i>ProgramID</i>	<i>N_Data</i>	<i>YearMin</i>	<i>YearMax</i>
5002	4885	1989	2024
69	2134	1998	2022
103	190	2020	2021
3001	6	1996	2009

Program names:

69 - Fisheries-Independent Monitoring (FIM) Program³

103 - EPA STORage and RETrieval Data Warehouse (STORET)/WQX²

3001 - Lagoon Watch (Formerly Marine Discovery Center)⁵

5002 - Florida STORET / WIN¹

Salinity - Discrete Water Quality

Seasonal Kendall-Tau Trend Analysis

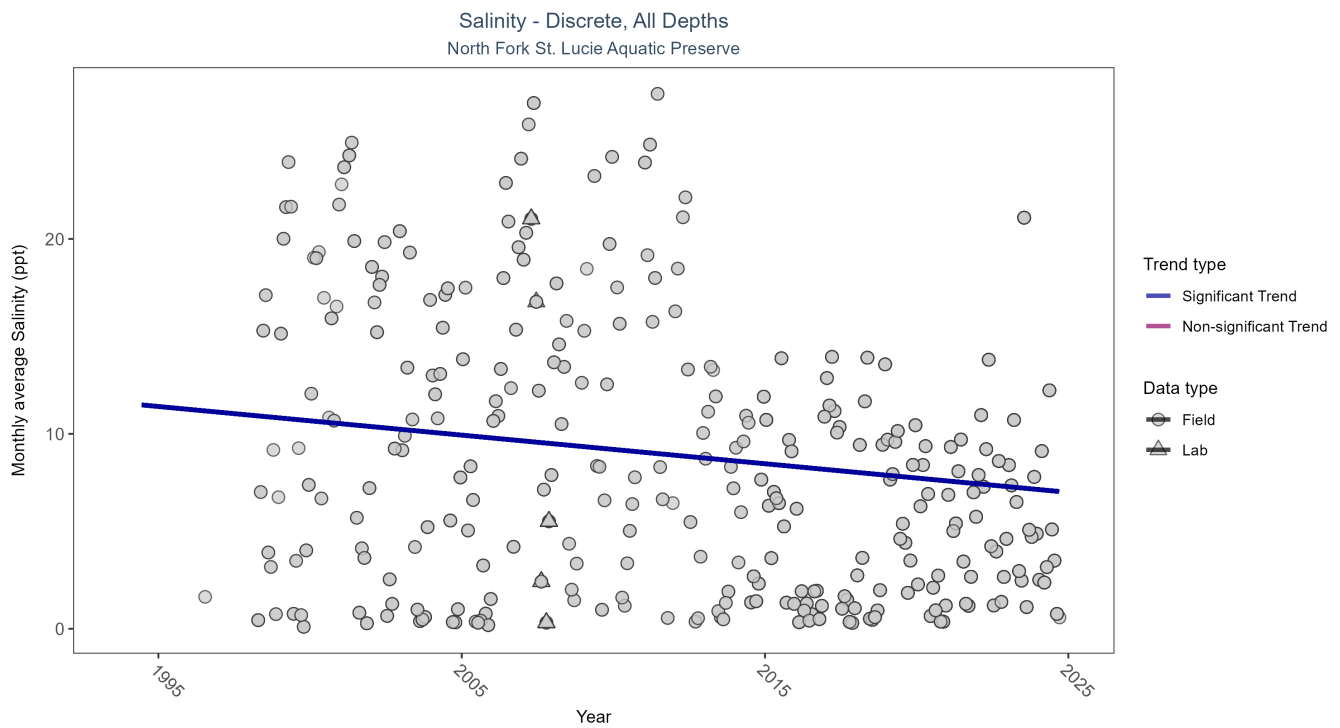


Figure 9: Seasonal Kendall-Tau Results for Salinity - Discrete

Table 14: Seasonal Kendall-Tau Trend Analysis for Salinity

RelativeDepth	N-Data	N-Years	Median	Independent	tau	p	SennSlope	SennIntercept	ChiSquared	pChiSquared	Trend
All	6603	31	4.5	TRUE	-0.1711	0	-0.1468	11.55	6.6862	0.8239	-1

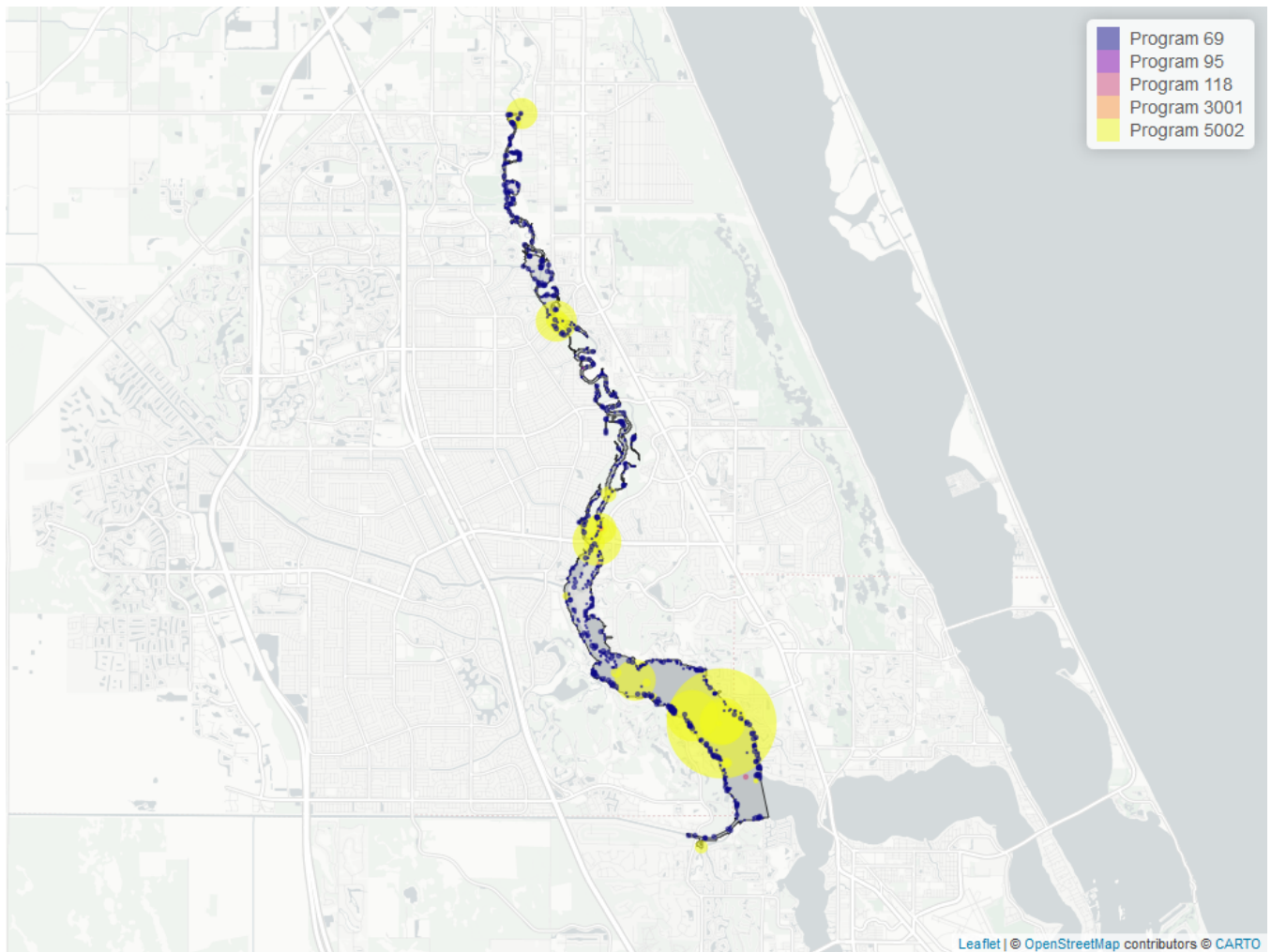


Figure 10: Map showing location of Discrete sampling sites for Salinity. The bubble size on the maps below reflect the amount of data available at each sampling site.

Table 15: Programs contributing data for Salinity

<i>ProgramID</i>	<i>N_Data</i>	<i>YearMin</i>	<i>YearMax</i>
5002	4475	1994	2024
69	2173	1998	2022
3001	6	1996	2009
118	5	2015	2015
95	1	2011	2011

Program names:

69 - Fisheries-Independent Monitoring (FIM) Program³

95 - Harmful Algal Bloom Marine Observation Network⁶

118 - National Aquatic Resource Surveys, National Coastal Condition Assessment⁴

3001 - Lagoon Watch (Formerly Marine Discovery Center)⁵

5002 - Florida STORET / WIN¹

Secchi Depth - Discrete Water Quality

Seasonal Kendall-Tau Trend Analysis

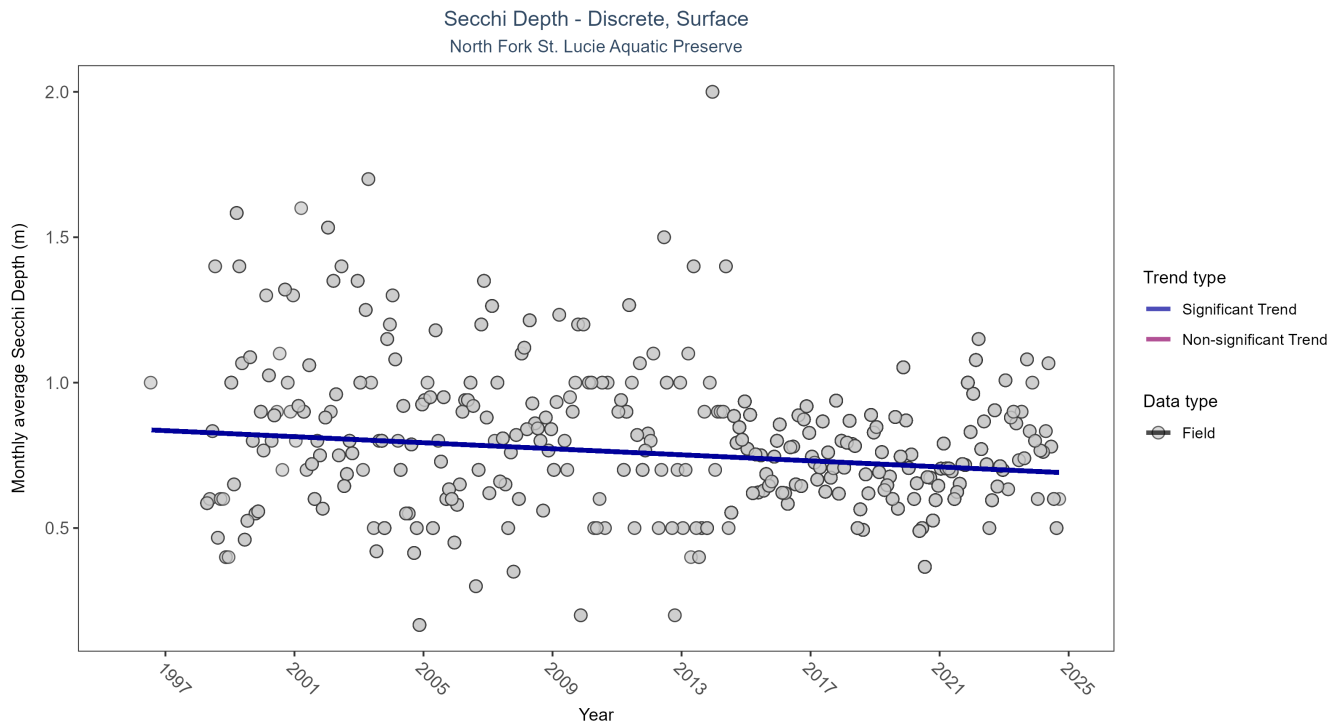


Figure 11: Seasonal Kendall-Tau Results for Secchi Depth - Discrete

Table 16: Seasonal Kendall-Tau Trend Analysis for Secchi Depth

RelativeDepth	N-Data	N-Years	Median	Independent	tau	p	SennSlope	SennIntercept	ChiSquared	pChiSquared	Trend
Surface	2547	28	0.7	TRUE	-0.1311	0.001	-0.0052	0.8402	14.8654	0.1887	-1

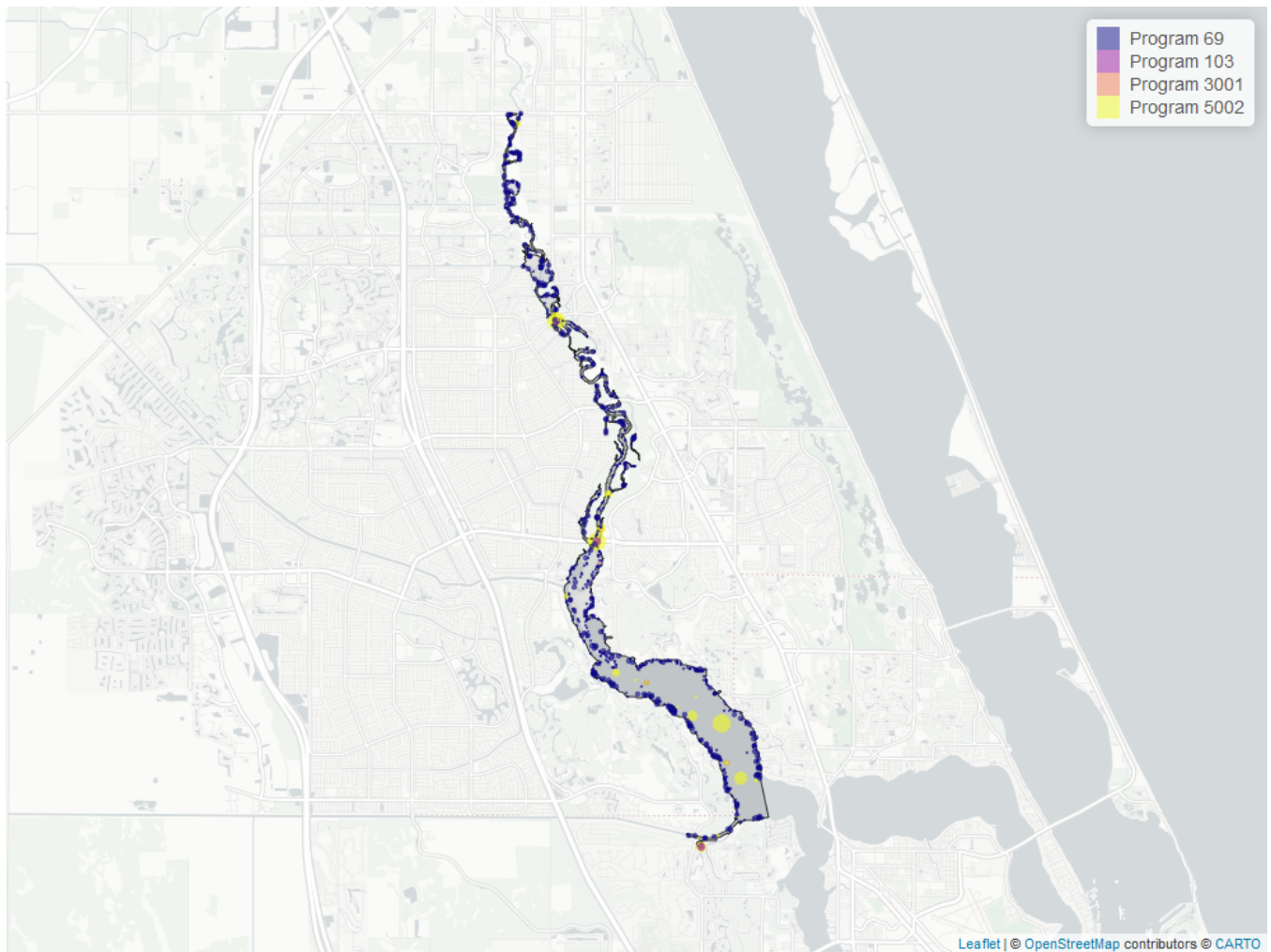


Figure 12: Map showing location of Discrete sampling sites for Secchi Depth. The bubble size on the maps below reflect the amount of data available at each sampling site.

Table 17: Programs contributing data for Secchi Depth

<i>ProgramID</i>	<i>N_Data</i>	<i>YearMin</i>	<i>YearMax</i>
69	2161	1998	2022
5002	336	1999	2024
103	44	2020	2021
3001	6	1996	2009

Program names:

69 - Fisheries-Independent Monitoring (FIM) Program³

103 - EPA STORage and RETrieval Data Warehouse (STORET)/WQX²

3001 - Lagoon Watch (Formerly Marine Discovery Center)⁵

5002 - Florida STORET / WIN¹

Total Nitrogen - Discrete Water Quality

Total Nitrogen Calculation:

The logic for calculated Total Nitrogen was provided by Kevin O'Donnell and colleagues at FDEP (with the help of Jay Silvanima, Watershed Monitoring Section). The following logic is used, in this order, based on the availability of specific nitrogen components.

- 1) $TN = TKN + NO_3O_2$;
- 2) $TN = TKN + NO_3 + NO_2$;
- 3) $TN = ORGN + NH_4 + NO_3O_2$;
- 4) $TN = ORGN + NH_4 + NO_2 + NO_3$;
- 5) $TN = TKN + NO_3$;
- 6) $TN = ORGN + NH_4 + NO_3$;

Additional Information:

- Rules for use of sample fraction:
 - Florida Department of Environmental Protection (FDEP) report that if both “Total” and “Dissolved” components are reported, only “Total” is used. If the total is not reported, then the dissolved components are used as a best available replacement.
 - Total nitrogen calculations are done using nitrogen components with the same sample fraction, nitrogen components with mixed total/dissolved sample fractions are not used. In other words, total nitrogen can be calculated when TKN and NO₃O₂ are both total sample fractions, or when both are dissolved sample fractions. *Future calculations of total nitrogen values may be based on components with mixed sample fractions.*
- Values inserted into data:
 - ParameterName = “Total Nitrogen”
 - SEACAR_QAQCFlagCode = “1Q”
 - SEACAR_QAQC_Description = “SEACAR Calculated”

Seasonal Kendall-Tau Trend Analysis

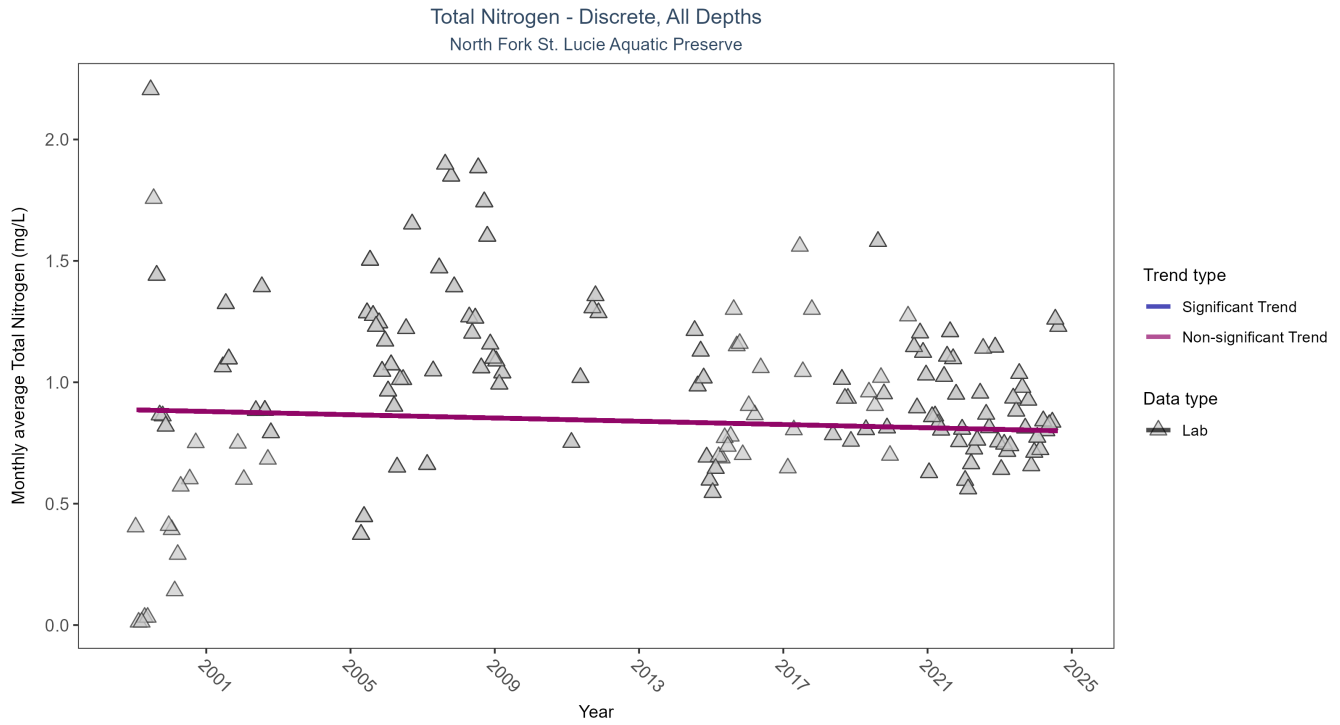


Figure 13: Seasonal Kendall-Tau Results for Total Nitrogen - Discrete

Table 18: Seasonal Kendall-Tau Trend Analysis for Total Nitrogen

RelativeDepth	N-Data	N-Years	Median	Independent	tau	p	SennSlope	SennIntercept	ChiSquared	pChiSquared	Trend
All	579	21	0.984	TRUE	-0.0553	0.262	-0.0034	0.8865	13.6929	0.2505	0

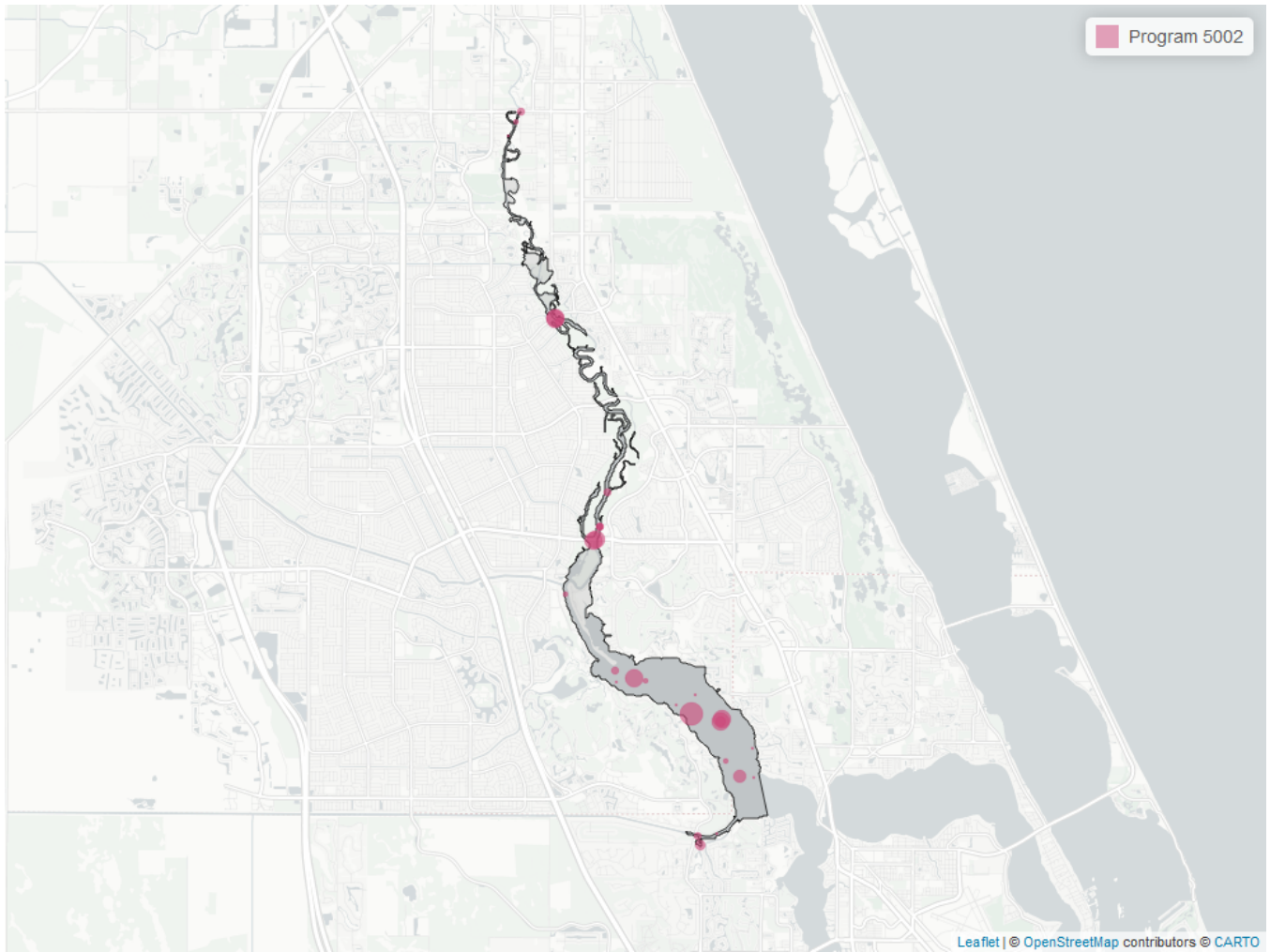


Figure 14: Map showing location of Discrete sampling sites for Total Nitrogen. The bubble size on the maps below reflect the amount of data available at each sampling site.

Table 19: Programs contributing data for Total Nitrogen

<i>ProgramID</i>	<i>N_Data</i>	<i>YearMin</i>	<i>YearMax</i>
5002	580	1999	2024

Program names:

5002 - Florida STORET / WIN¹

Total Phosphorus - Discrete Water Quality

Seasonal Kendall-Tau Trend Analysis

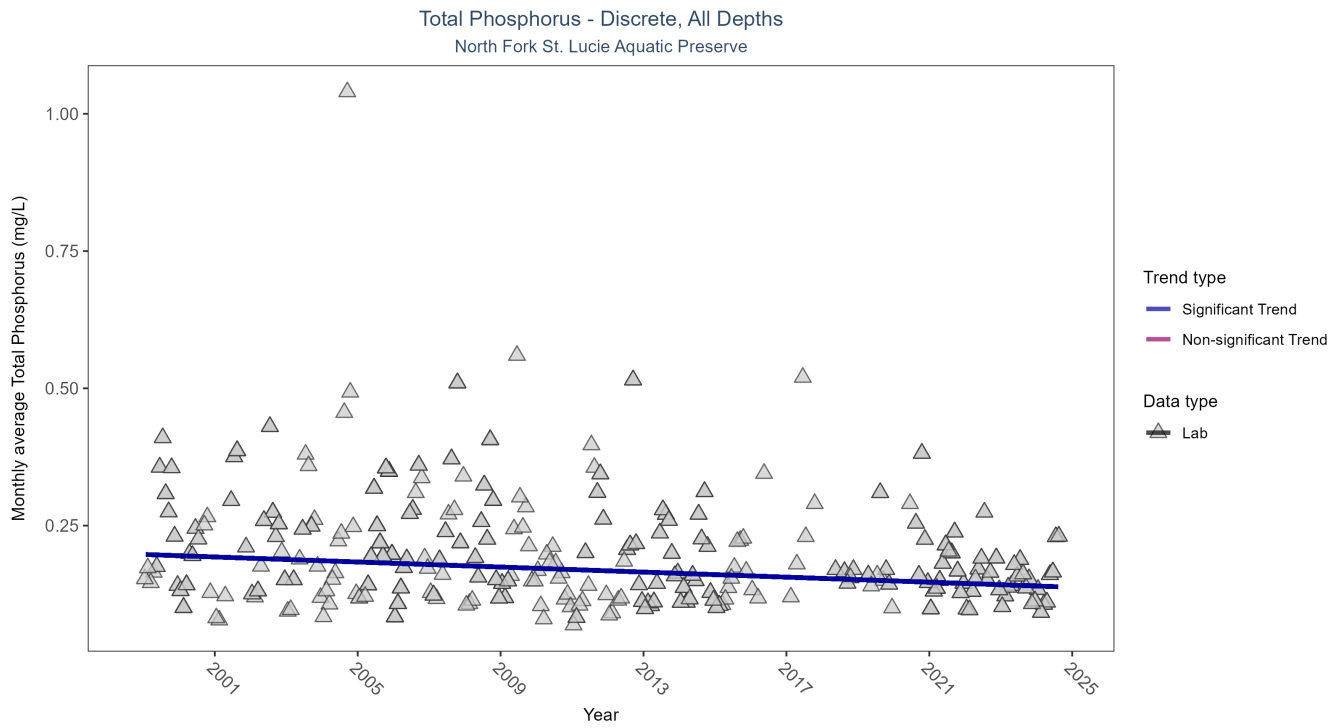


Figure 15: Seasonal Kendall-Tau Results for Total Phosphorus - Discrete

Table 20: Seasonal Kendall-Tau Trend Analysis for Total Phosphorus

RelativeDepth	N-Data	N-Years	Median	Independent	tau	p	SennSlope	SennIntercept	ChiSquared	pChiSquared	Trend
All	1046	26	0.177	TRUE	-0.2703	0	-0.0023	0.1975	9.3194	0.5924	-1

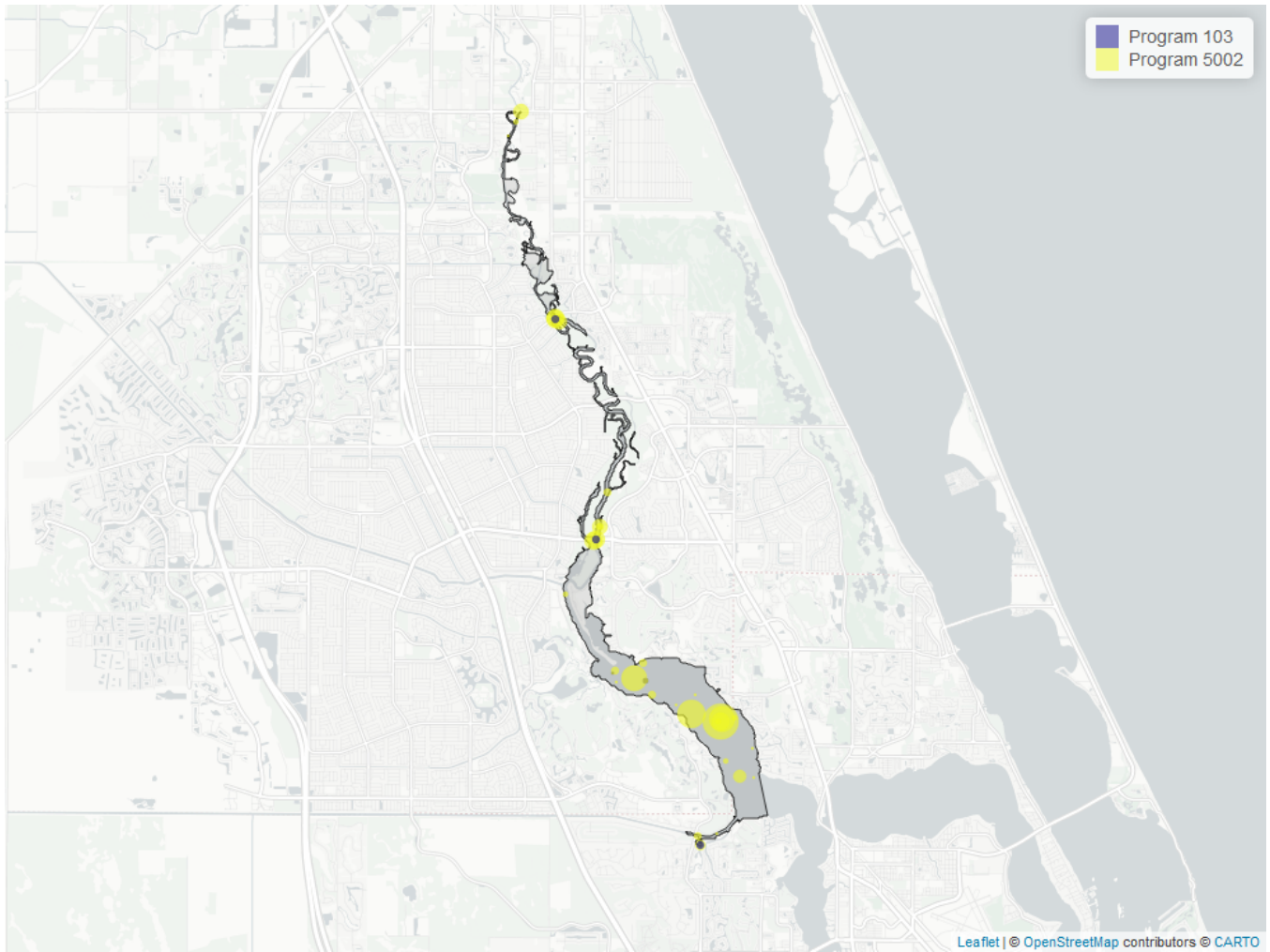


Figure 16: Map showing location of Discrete sampling sites for Total Phosphorus. The bubble size on the maps below reflect the amount of data available at each sampling site.

Table 21: Programs contributing data for Total Phosphorus

<i>ProgramID</i>	<i>N_Data</i>	<i>YearMin</i>	<i>YearMax</i>
5002	1015	1999	2024
103	39	2020	2021

Program names:

103 - EPA STOrage and RETrieval Data Warehouse (STORET)/WQX²

5002 - Florida STORET / WIN¹

Total Suspended Solids - Discrete Water Quality

Seasonal Kendall-Tau Trend Analysis

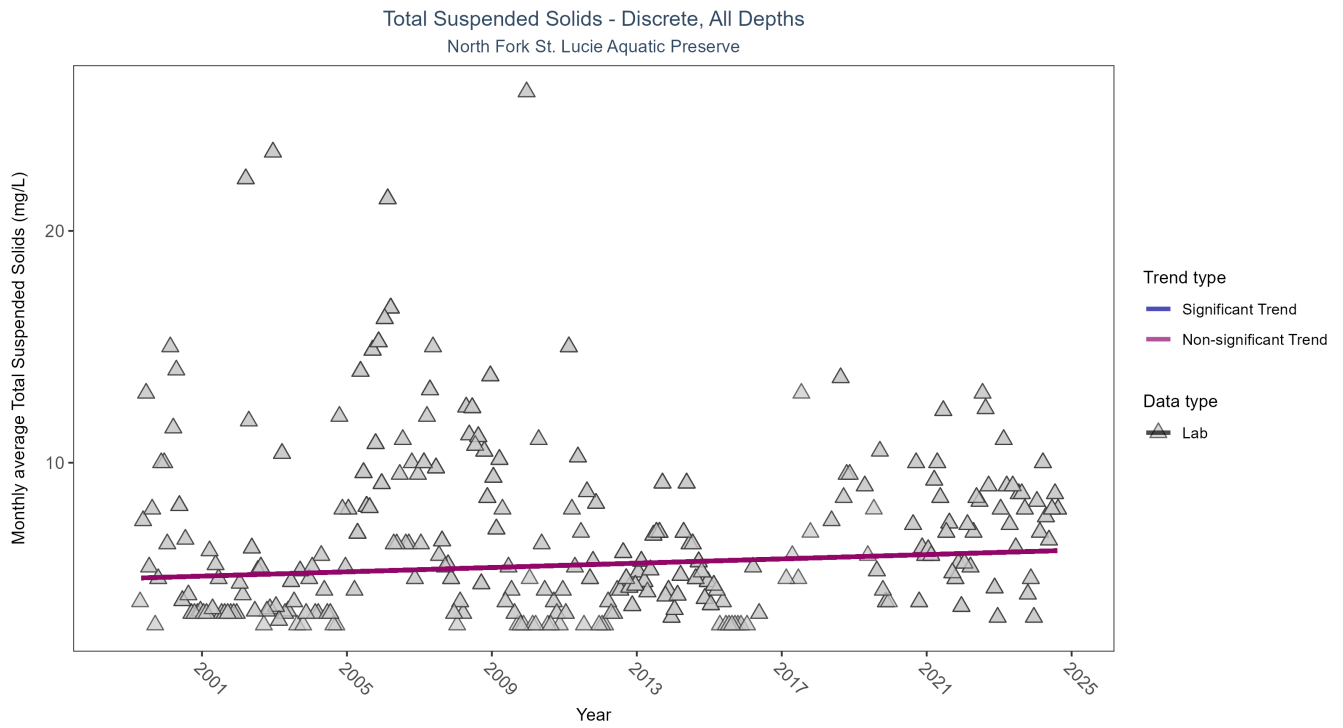


Figure 17: Seasonal Kendall-Tau Results for Total Suspended Solids - Discrete

Table 22: Seasonal Kendall-Tau Trend Analysis for Total Suspended Solids

RelativeDepth	N-Data	N-Years	Median	Independent	tau	p	SennSlope	SennIntercept	ChiSquared	pChiSquared	Trend
All	1033	26	6	TRUE	0.0798	0.0575	0.0465	5.014	14.7705	0.1932	0

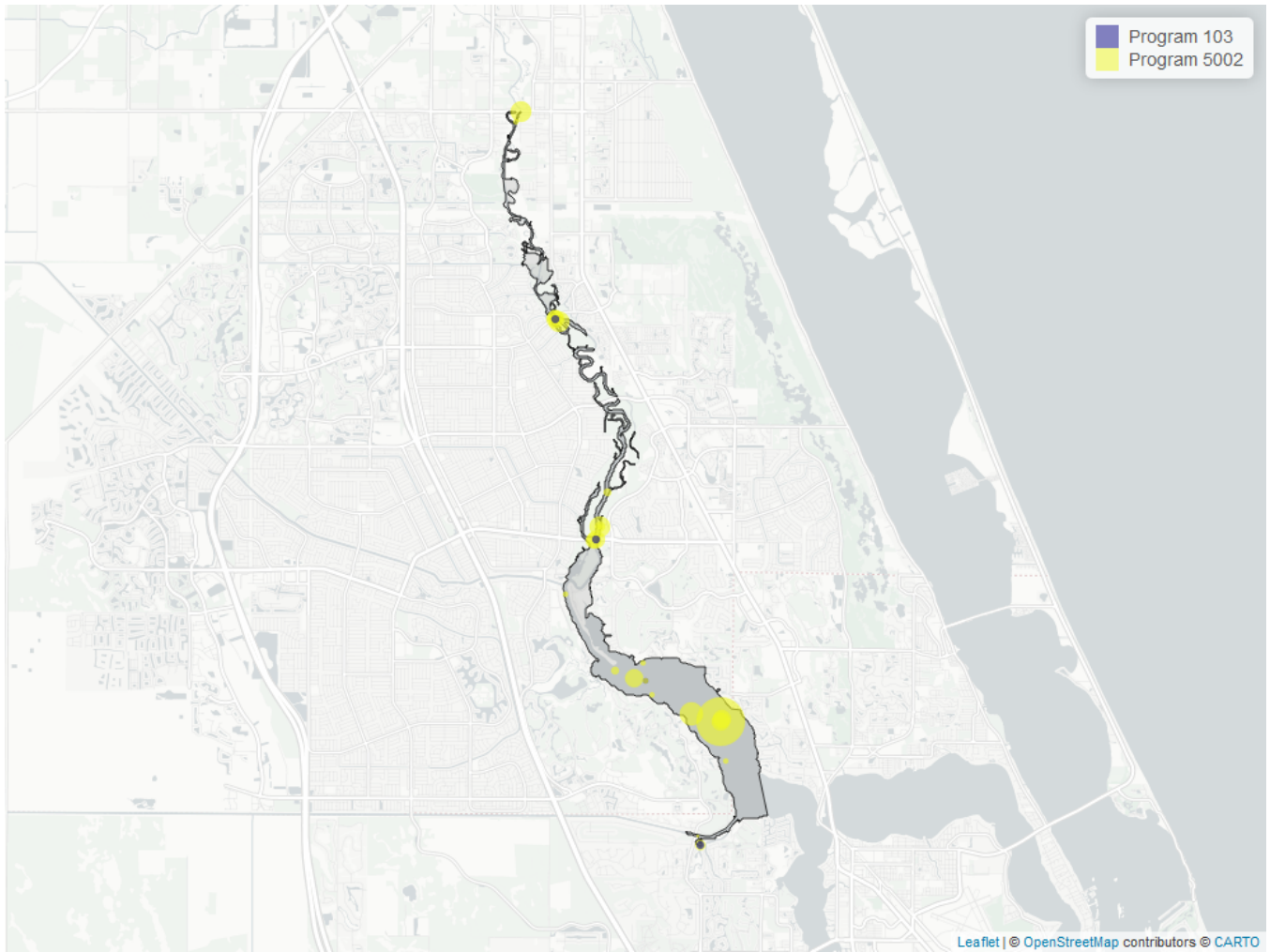


Figure 18: Map showing location of Discrete sampling sites for Total Suspended Solids. The bubble size on the maps below reflect the amount of data available at each sampling site.

Table 23: Programs contributing data for Total Suspended Solids

<i>ProgramID</i>	<i>N_Data</i>	<i>YearMin</i>	<i>YearMax</i>
5002	1036	1999	2024
103	38	2020	2021

Program names:

103 - EPA STORage and RETrieval Data Warehouse (STORET)/WQX²

5002 - Florida STORET / WIN¹

Turbidity - Discrete Water Quality

Seasonal Kendall-Tau Trend Analysis

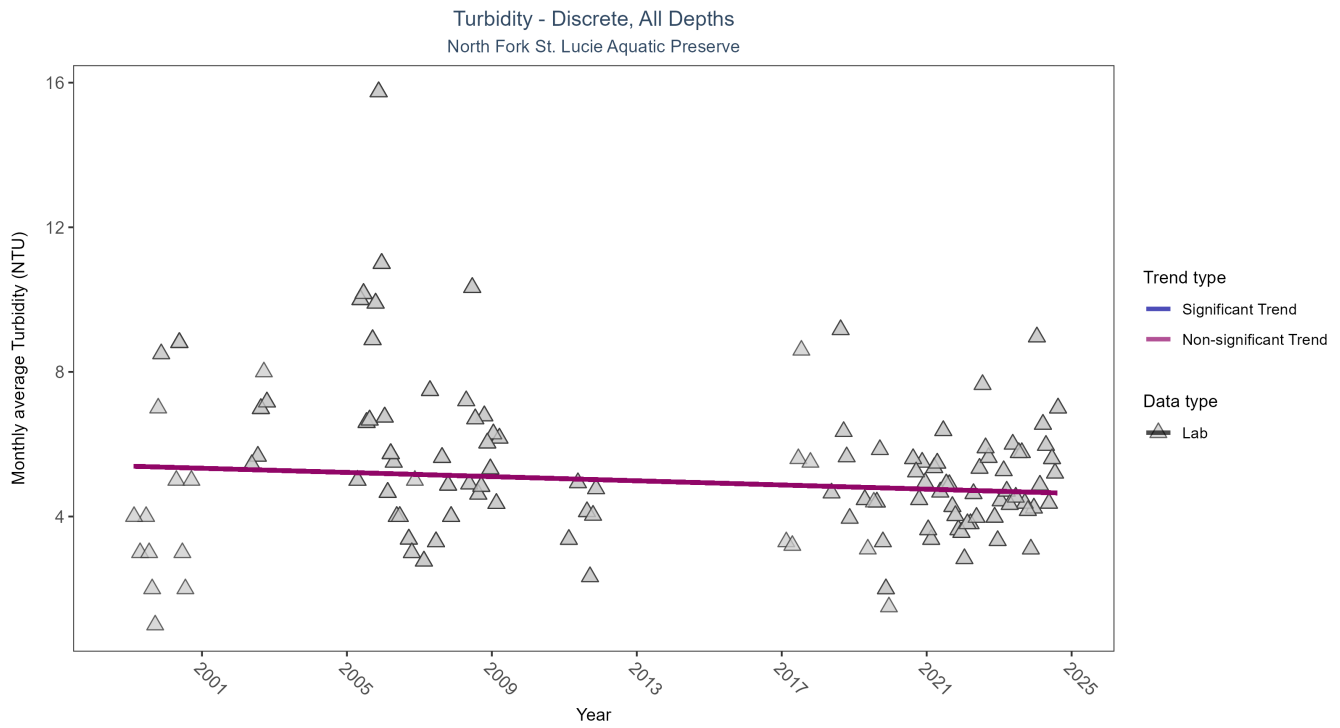


Figure 19: Seasonal Kendall-Tau Results for Turbidity - Discrete

Table 24: Seasonal Kendall-Tau Trend Analysis for Turbidity

RelativeDepth	N-Data	N-Years	Median	Independent	tau	p	SennSlope	SennIntercept	ChiSquared	pChiSquared	Trend
All	543	17	5	TRUE	-0.0747	0.2928	-0.0289	5.3926	17.375	0.0973	0

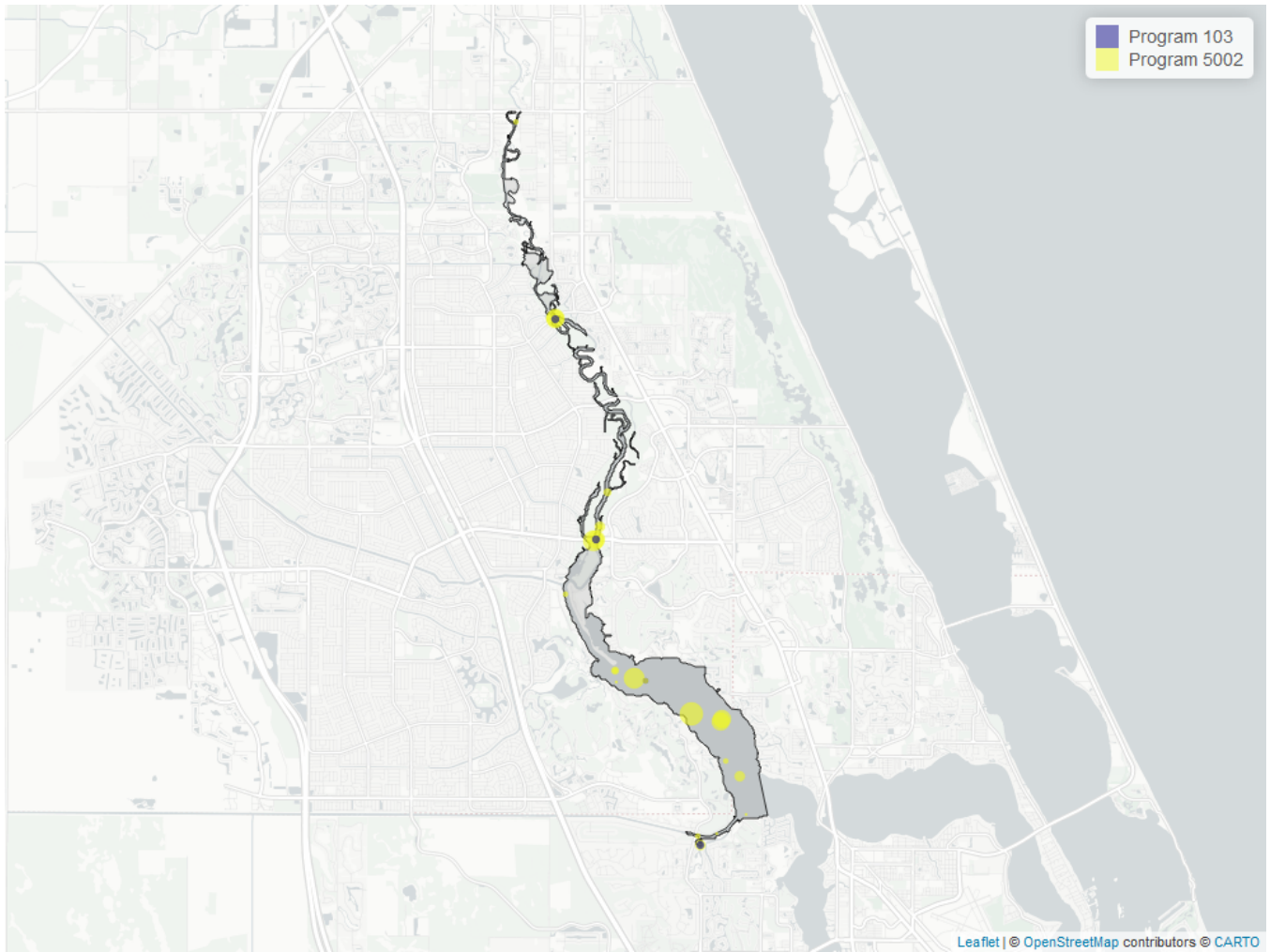


Figure 20: Map showing location of Discrete sampling sites for Turbidity. The bubble size on the maps below reflect the amount of data available at each sampling site.

Table 25: Programs contributing data for Turbidity

<i>ProgramID</i>	<i>N_Data</i>	<i>YearMin</i>	<i>YearMax</i>
5002	544	1999	2024
103	36	2020	2021

Program names:

103 - EPA STOrage and RETrieval Data Warehouse (STORET)/WQX²

5002 - Florida STORET / WIN¹

Water Temperature - Discrete Water Quality

Seasonal Kendall-Tau Trend Analysis

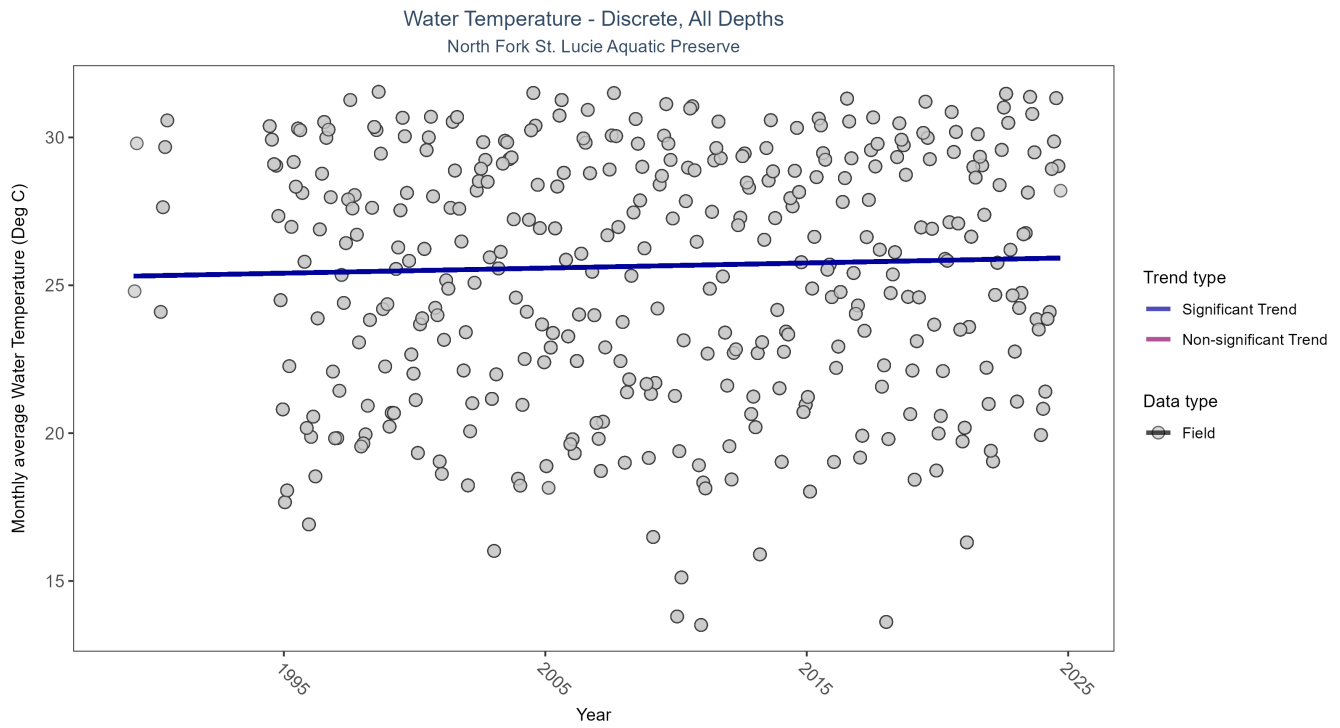


Figure 21: Seasonal Kendall-Tau Results for Water Temperature - Discrete

Table 26: Seasonal Kendall-Tau Trend Analysis for Water Temperature

RelativeDepth	N-Data	N-Years	Median	Independent	tau	p	SennSlope	SennIntercept	ChiSquared	pChiSquared	Trend
All	7250	33	26	TRUE	0.0841	0.0228	0.0173	25.3059	8.853	0.6355	1

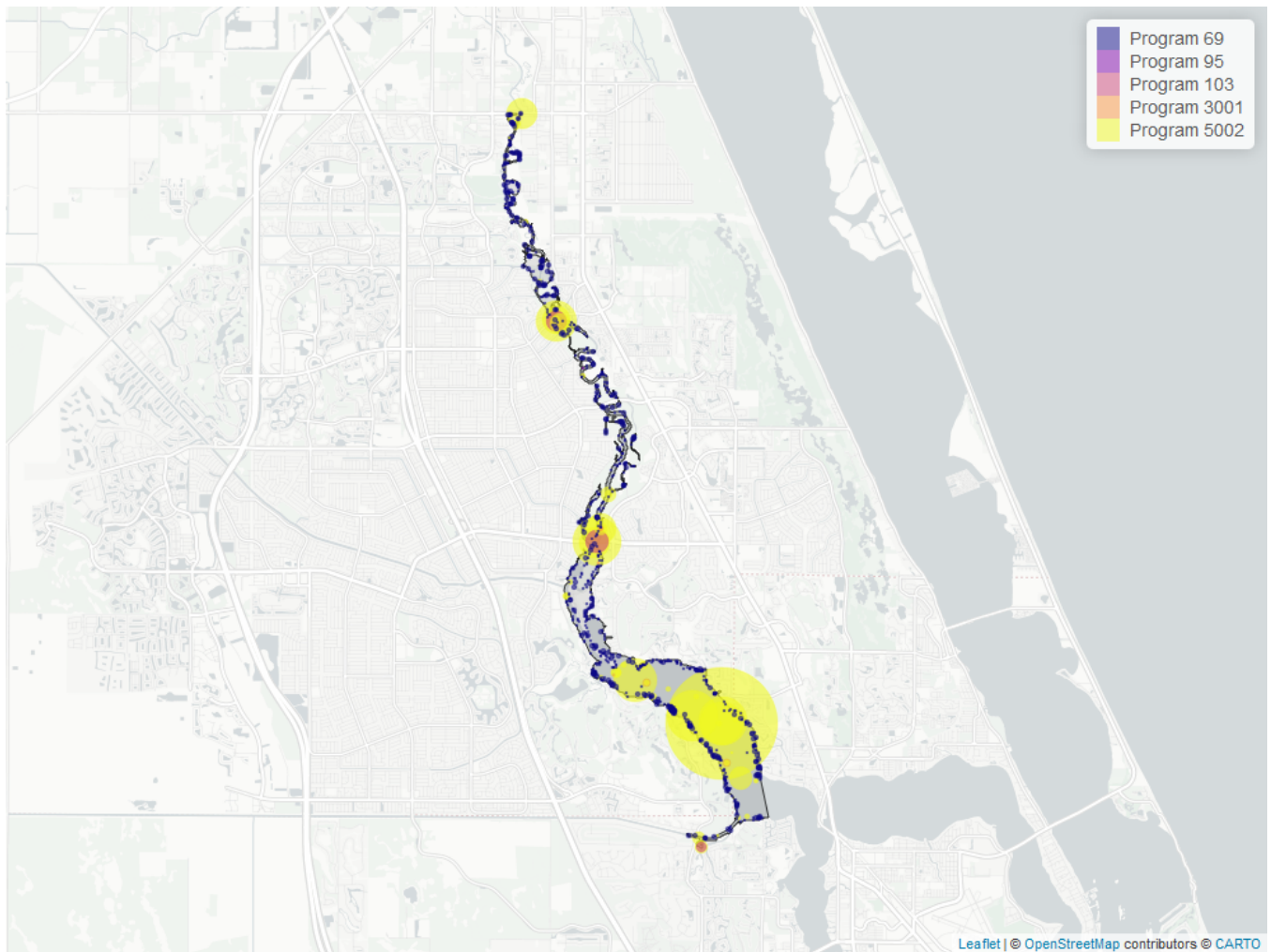


Figure 22: Map showing location of Discrete sampling sites for Water Temperature. The bubble size on the maps below reflect the amount of data available at each sampling site.

Table 27: Programs contributing data for Water Temperature

<i>ProgramID</i>	<i>N_Data</i>	<i>YearMin</i>	<i>YearMax</i>
5002	4916	1989	2024
69	2181	1998	2022
103	190	2020	2021
3001	6	1996	2009
95	1	2011	2011

Program names:

- 69 - Fisheries-Independent Monitoring (FIM) Program³
- 95 - Harmful Algal Bloom Marine Observation Network⁶
- 103 - EPA STORage and RETrieval Data Warehouse (STORET)/WQX²
- 3001 - Lagoon Watch (Formerly Marine Discovery Center)⁵
- 5002 - Florida STORET / WIN¹

Water Quality - Continuous

The following files were used in the continuous analysis:

- *Combined_WQ_WC_NUT_cont_Dissolved_Oxygen_NE-2024-Dec-08.txt*
- *Combined_WQ_WC_NUT_cont_Dissolved_Oxygen_Saturation_NE-2024-Dec-08.txt*
- *Combined_WQ_WC_NUT_cont_pH_NE-2024-Dec-08.txt*
- *Combined_WQ_WC_NUT_cont_Salinity_NE-2024-Dec-08.txt*
- *Combined_WQ_WC_NUT_cont_Turbidity_NE-2024-Dec-08.txt*
- *Combined_WQ_WC_NUT_cont_Water_Temperature_NE-2024-Dec-08.txt*

Continuous monitoring locations in North Fork St. Lucie Aquatic Preserve

Table 28: National Water Information System (7)

<i>ProgramLocationID</i>	<i>Years of Data</i>	<i>Use in Analysis</i>	<i>Parameters</i>
02276575	10	TRUE	Sal , TempW

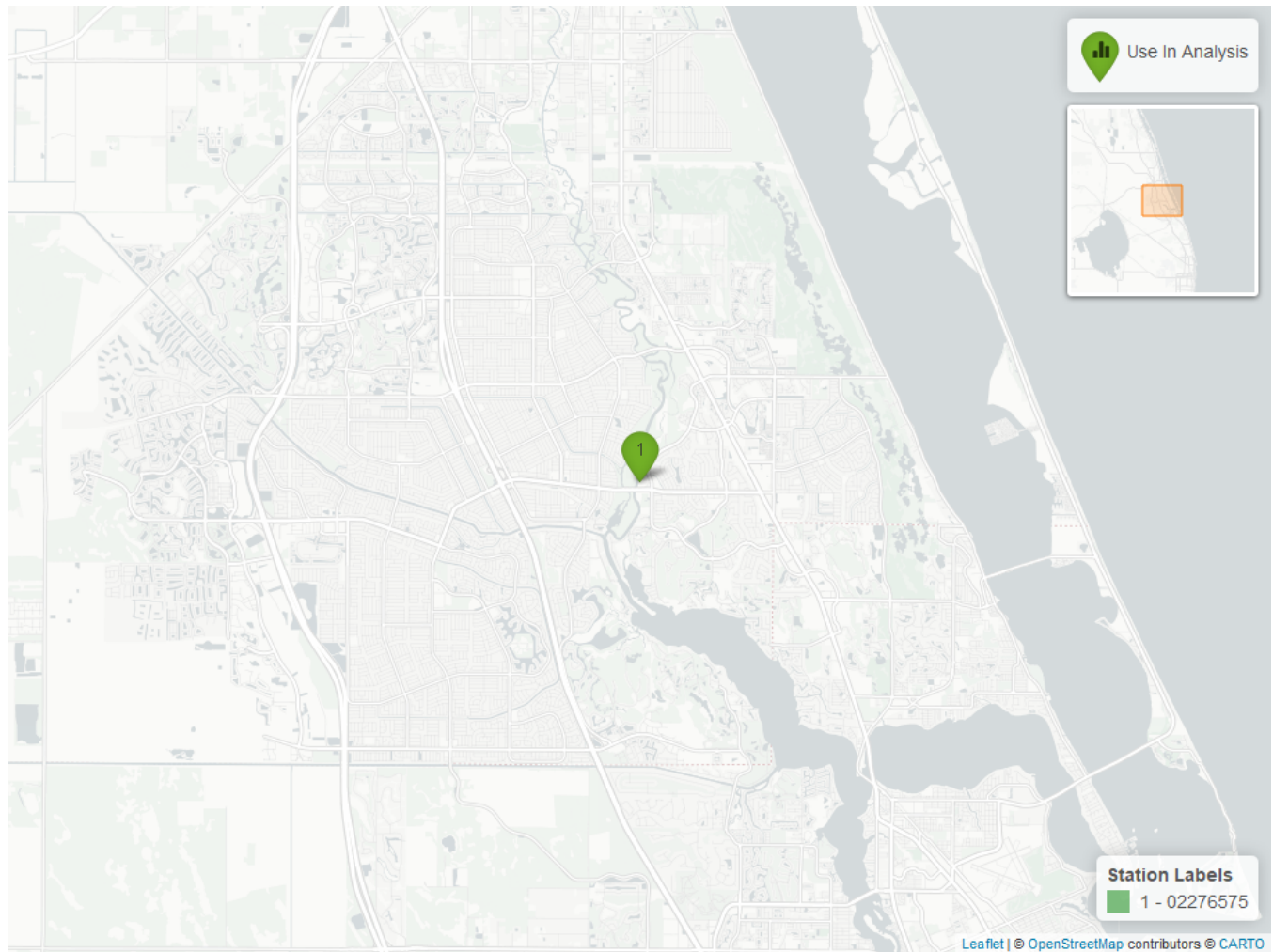


Figure 23: Map showing Continuous Water Quality Monitoring sampling locations within the boundaries of North Fork St. Lucie Aquatic Preserve. Sites marked as *Use In Analysis* are featured in this report.

References

1. Florida Department of Environmental Protection (DEP). [Florida STORET / WIN](#). (2024).
2. U.S. Environmental Protection Agency (EPA). [EPA STOrage and RETrieval Data Warehouse \(STORET\)/WQX](#). (2023).
3. Florida Fish and Wildlife Conservation Commission (FWC). [Fisheries-Independent Monitoring \(FIM\) Program](#). (2022).
4. U.S. Environmental Protection Agency (EPA); Office of Water; National Oceanic and Atmospheric Administration (NOAA); U.S. Geological Survey (USGS); U.S. Fish and Wildlife Service (USFWS); National Estuary Program (NEP); coastal states. [National Aquatic Resource Surveys, National Coastal Condition Assessment](#). (2021).
5. Volusia County (Florida); Marine Discovery Center. [Lagoon Watch \(Formerly Marine Discovery Center\)](#). (2023).
6. Florida Fish and Wildlife Conservation Commission (FWC); Florida Fish and Wildlife Research Institute (FWRI). [Harmful Algal Bloom Marine Observation Network](#). (2018).