

# Cockroach Bay Aquatic Preserve

## SEACAR Habitat Analyses

Last compiled on 08 January, 2025

### Contents

<b>Funding &amp; Acknowledgements</b>	<b>2</b>
<b>Threshold Filtering</b>	<b>2</b>
<b>Value Qualifiers</b>	<b>3</b>
<b>Water Column</b>	<b>5</b>
<b>Seasonal Kendall-Tau Analysis</b>	<b>5</b>
<b>Water Quality - Discrete</b>	<b>5</b>
Chlorophyll a, Corrected for Pheophytin - Discrete Water Quality . . . . .	6
Chlorophyll a, Uncorrected for Pheophytin - Discrete Water Quality . . . . .	7
Colored Dissolved Organic Matter - Discrete Water Quality . . . . .	9
Dissolved Oxygen - Discrete Water Quality . . . . .	11
Dissolved Oxygen Saturation - Discrete Water Quality . . . . .	14
pH - Discrete Water Quality . . . . .	15
Salinity - Discrete Water Quality . . . . .	17
Secchi Depth - Discrete Water Quality . . . . .	19
Total Nitrogen - Discrete Water Quality . . . . .	21
Total Phosphorus - Discrete Water Quality . . . . .	24
Total Suspended Solids - Discrete Water Quality . . . . .	26
Turbidity - Discrete Water Quality . . . . .	28
Water Temperature - Discrete Water Quality . . . . .	30
<b>Submerged Aquatic Vegetation</b>	<b>33</b>
Parameters . . . . .	33
Species . . . . .	33
Notes . . . . .	33
<b>Nekton</b>	<b>39</b>
<b>Coastal Wetlands</b>	<b>40</b>
<b>References</b>	<b>41</b>

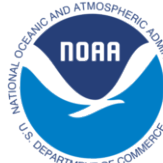
## Funding & Acknowledgements

The data used in this analysis is from the Export Standardized Tables in the SEACAR Data Discovery Interface (DDI). Documents and information available through the SEACAR DDI are owned by the data provider(s) and users are expected to provide appropriate credit following accepted citation formats. Users are encouraged to access data to maximize utilization of gained knowledge, reducing redundant research and facilitating partnerships and scientific innovation.

With respect to documents and information available from SEACAR DDI, neither the State of Florida nor the Florida Department of Environmental Protection makes any warranty, expressed or implied, including the warranties of merchantability and fitness for a particular purpose arising out of the use or inability to use the data, or assumes any legal liability or responsibility for the accuracy, completeness, or usefulness of any information, apparatus, product, or process disclosed, or represents that its use would not infringe privately owned rights.

This report was funded in part, through a grant agreement from the Florida Department of Environmental Protection, Florida Coastal Management Program, by a grant provided by the Office for Coastal Management under the Coastal Zone Management Act of 1972, as amended, National Oceanic and Atmospheric Administration. The views, statements, findings, conclusions and recommendations expressed herein are those of the author(s) and do not necessarily reflect the views of the State of Florida, NOAA or any of their sub agencies.

Published: 2025-01-08



## Threshold Filtering

Threshold filters, following the guidance of Florida Department of Environmental Protection’s (*FDEP*) Division of Environmental Assessment and Restoration (*DEAR*) are used to exclude specific results values from the SEACAR Analysis. Based on the threshold filters, Quality Assurance / Quality Control (*QAQC*) Flags are inserted into the *SEACAR\_QAQCFlagCode* and *SEACAR\_QAQC\_Description* columns of the export data. The *Include* column indicates whether the *QAQC* Flag will also indicate that data are excluded from analysis. No data are excluded from the data export, but the analysis scripts can use the *Include* column to exclude data (1 to include, 0 to exclude).

Table 1: Continuous Water Quality threshold values

<i>Parameter Name</i>	<i>Units</i>	<i>Low Threshold</i>	<i>High Threshold</i>
Dissolved Oxygen	mg/L	-0.000001	50
Dissolved Oxygen Saturation	%	-0.000001	500
Salinity	ppt	-0.000001	70
Turbidity	NTU	-0.000001	4000
Water Temperature	Degrees C	-5.000000	45
pH	None	2.000000	14

Table 2: Discrete Water Quality threshold values

<i>Parameter Name</i>	<i>Units</i>	<i>Low Threshold</i>	<i>High Threshold</i>
Ammonia, Un-ionized (NH3)	mg/L	-	-
Ammonium, Filtered (NH4)	mg/L	-	-
Chlorophyll a, Corrected for Pheophytin	ug/L	-	-
Chlorophyll a, Uncorrected for Pheophytin	ug/L	-	-
Colored Dissolved Organic Matter	PCU	-	-

<i>Parameter Name</i>	<i>Units</i>	<i>Low Threshold</i>	<i>High Threshold</i>
Dissolved Oxygen	mg/L	-0.000001	25
Dissolved Oxygen Saturation	%	-0.000001	310
Fluorescent Dissolved Organic Matter	QSE	-	-
Light Extinction Coefficient	m <sup>-1</sup>	-	-
NO2+3, Filtered	mg/L	-	-
Nitrate (NO3)	mg/L	-	-
Nitrite (NO2)	mg/L	-	-
Nitrogen, organic	mg/L	-	-
Phosphate, Filtered (PO4)	mg/L	-	-
Salinity	ppt	-0.000001	70
Secchi Depth	m	0.000001	50
Specific Conductivity	mS/cm	0.005000	100
Total Kjeldahl Nitrogen	mg/L	-	-
Total Nitrogen	mg/L	-	-
Total Nitrogen	mg/L	-	-
Total Phosphorus	mg/L	-	-
Total Suspended Solids	mg/L	-	-
Turbidity	NTU	-	-
Water Temperature	Degrees C	3.000000	40
pH	None	2.000000	13

Table 3: Quality Assurance Flags inserted based on threshold checks listed in Table 1 and 2

<i>SEACAR QAQC Description</i>	<i>Include</i>	<i>SEACAR QAQCFlagCode</i>
Exceeds maximum threshold	0	2Q
Below minimum threshold	0	4Q
Within threshold tolerance	1	6Q
No defined thresholds for this parameter	1	7Q

## Value Qualifiers

Value qualifier codes included within the data are used to exclude certain results from the analysis. The data are retained in the data export files, but the analysis uses the *Include* column to filter the results.

### STORET and WIN value qualifier codes

Value qualifier codes from *STORET* and *WIN* data are examined with the database and used to populate the *Include* column in data exports.

Table 4: Value Qualifier codes excluded from analysis

<i>Qualifier Source</i>	<i>Value Qualifier</i>	<i>Include</i>	<i>MDL</i>	<i>Description</i>
STORET-WIN	H	0	0	Value based on field kit determination; results may not be accurate
STORET-WIN	J	0	0	Estimated value
STORET-WIN	V	0	0	Analyte was detected at or above method detection limit
STORET-WIN	Y	0	0	Lab analysis from an improperly preserved sample; data may be inaccurate

### Discrete Water Quality Value Qualifiers

The following value qualifiers are highlighted in the Discrete Water Quality section of this report. An exception is made for **Program 476 - Charlotte Harbor Estuaries Volunteer Water Quality Monitoring Network** and data flagged with Value Qualifier **H** are included for this program only.

**H** - Value based on field kit determination; results may not be accurate. This code shall be used if a field screening test (e.g., field gas chromatograph data, immunoassay, or vendor-supplied field kit) was used to generate the value and the field kit or method has not been recognized by the Department as equivalent to laboratory methods.

**I** - The reported value is greater than or equal to the laboratory method detection limit but less than the laboratory practical quantitation limit.

**Q** - Sample held beyond the accepted holding time. This code shall be used if the value is derived from a sample that was prepared or analyzed after the approved holding time restrictions for sample preparation or analysis.

**S** - Secchi disk visible to bottom of waterbody. The value reported is the depth of the waterbody at the location of the Secchi disk measurement.

**U** - Indicates that the compound was analyzed for but not detected. This symbol shall be used to indicate that the specified component was not detected. The value associated with the qualifier shall be the laboratory method detection limit. Unless requested by the client, less than the method detection limit values shall not be reported

**Systemwide Monitoring Program (SWMP) value qualifier codes**

Value qualifier codes from the *SWMP* continuous program are examined with the database and used to populate the *Include* column in data exports. *SWMP* Qualifier Codes are indicated by *QualifierSource=SWMP*.

Table 5: SWMP Value Qualifier codes

<i>Qualifier Source</i>	<i>Value Qualifier</i>	<i>Include</i>	<i>Description</i>
SWMP	-1	Yes	Optional parameter not collected
SWMP	-2	No	Missing data
SWMP	-3	No	Data rejected due to QA/QC
SWMP	-4	No	Outside low sensor range
SWMP	-5	No	Outside high sensor range
SWMP	0	Yes	Passed initial QA/QC checks
SWMP	1	No	Suspect data
SWMP	2	Yes	Reserved for future use
SWMP	3	Yes	Calculated data: non-vented depth/level sensor correction for changes in barometric pressure
SWMP	4	Yes	Historical: Pre-auto QA/QC
SWMP	5	Yes	Corrected data

## Water Column

The water column habitat extends from the water's surface to the bottom sediments, and it's where fish, dolphins, crabs and people swim! So much life makes its home in the water column that the health of marine and coastal ecosystems, as well as human economies, depend on the condition of this vulnerable habitat. Local patterns of rainfall, temperature, winds and currents can rapidly change the condition of the water column, while global influences such as [El Niño/La Niña](#), large-scale fluctuation in sea temperatures and climate change can have long-term effects. Inputs from the prosperity of our day-to-day lives including farming, mining and forestry, and emissions from power generation, automobiles and water treatment can also alter the health of the water column. Acting alone or together, each input can have complex and lasting effects on habitats and ecosystems.

SEACAR evaluates water column health with several essential parameters. These include nutrient surveys of nitrogen and phosphorus, and water quality assessments of salinity, dissolved oxygen, pH, and water temperature. Water clarity is evaluated with Secchi depth, turbidity, levels of chlorophyll a, total suspended solids, and colored dissolved organic matter. Additionally, the richness of nekton is indicated by the abundance of free-swimming fishes and macroinvertebrates like crabs and shrimps.

## Seasonal Kendall-Tau Analysis

Indicators must have a minimum of five to ten years, depending on the habitat, of data within the geographic range of the analysis to be included in the analysis. Ten years of data are required for discrete parameters, and five years of data are required for continuous parameters. If there are insufficient years of data, the number of years of data available will be noted and labeled as “insufficient data to conduct analysis”. Further, for the preferred Seasonal Kendall-Tau test, there must be data from at least two months in common across at least two consecutive years within the RCP managed area being analyzed. Values that pass both of these tests will be included in the analysis and be labeled as *Use\_In\_Analysis* = **TRUE**. Any that fail either test will be excluded from the analyses and labeled as *Use\_In\_Analysis* = **FALSE**. The points for all Water Column plots displayed in this section are monthly averages. Trend significance will be denoted as “Significant Trend” (when  $p < 0.05$ ), or “Non-significant Trend” (when  $p \geq 0.05$ ). Any parameters with insufficient data to perform Seasonal Kendall-Tau test will have their monthly averages plotted without a corresponding trend line.

## Water Quality - Discrete

The following files were used in the discrete analysis:

- *Combined\_WQ\_WC\_NUT\_Chlorophyll\_a\_corrected\_for\_pheophytin-2024-Dec-08.txt*
- *Combined\_WQ\_WC\_NUT\_Chlorophyll\_a\_uncorrected\_for\_pheophytin-2024-Dec-08.txt*
- *Combined\_WQ\_WC\_NUT\_Colored\_dissolved\_organic\_matter\_CDOM-2024-Dec-08.txt*
- *Combined\_WQ\_WC\_NUT\_Dissolved\_Oxygen-2024-Dec-08.txt*
- *Combined\_WQ\_WC\_NUT\_Dissolved\_Oxygen\_Saturation-2024-Dec-08.txt*
- *Combined\_WQ\_WC\_NUT\_pH-2024-Dec-08.txt*
- *Combined\_WQ\_WC\_NUT\_Salinity-2024-Dec-08.txt*
- *Combined\_WQ\_WC\_NUT\_Secchi\_Depth-2024-Dec-08.txt*
- *Combined\_WQ\_WC\_NUT\_Total\_Nitrogen-2024-Dec-08.txt*
- *Combined\_WQ\_WC\_NUT\_Total\_Phosphorus-2024-Dec-08.txt*
- *Combined\_WQ\_WC\_NUT\_Total\_Suspended\_Solids\_TSS-2024-Dec-08.txt*
- *Combined\_WQ\_WC\_NUT\_Turbidity-2024-Dec-08.txt*
- *Combined\_WQ\_WC\_NUT\_Water\_Temperature-2024-Dec-08.txt*

# Chlorophyll a, Corrected for Pheophytin - Discrete Water Quality

## Seasonal Kendall-Tau Trend Analysis

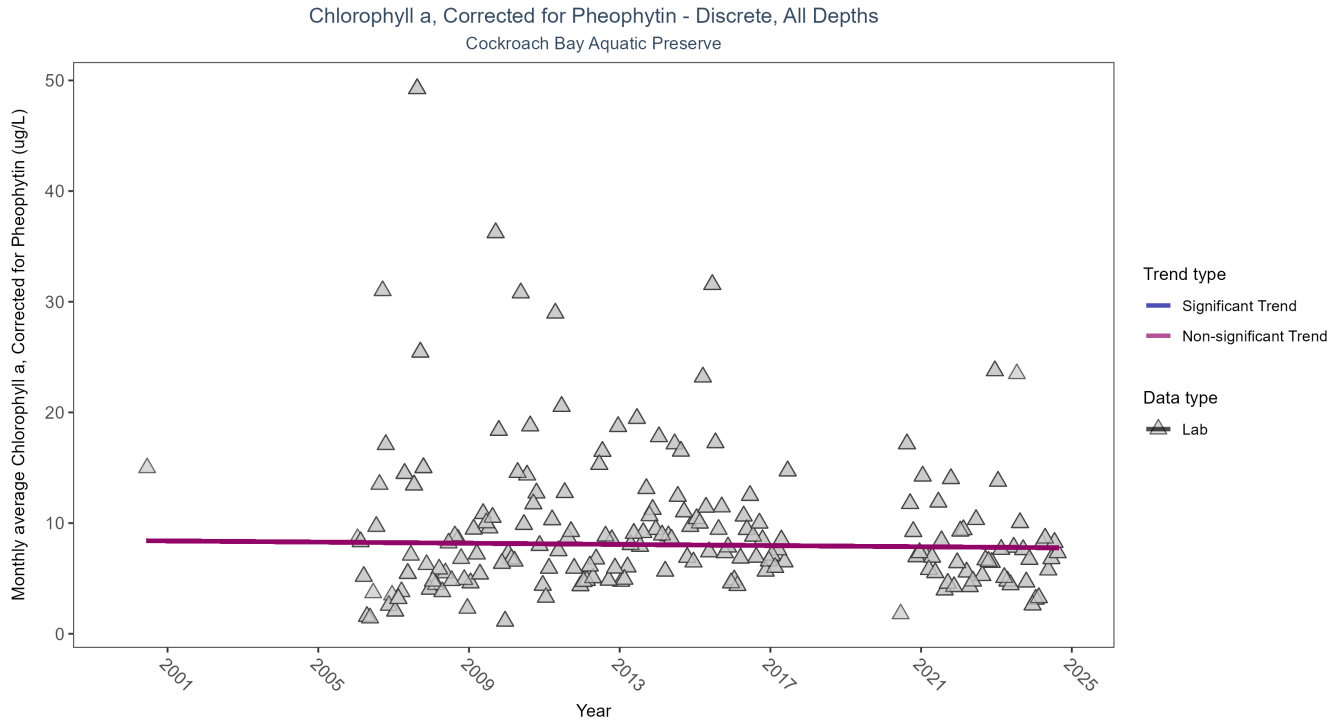


Figure 1: Seasonal Kendall-Tau Results for Chlorophyll a, Corrected for Pheophytin - Discrete

Table 6: Seasonal Kendall-Tau Trend Analysis for Chlorophyll a, Corrected for Pheophytin

RelativeDepth	N-Data	N-Years	Median	Independent	tau	p	SennSlope	SennIntercept	ChiSquared	pChiSquared	Trend
All	869	18	6.2	TRUE	-0.0261	0.6289	-0.0263	8.4159	18.0654	0.0801	0

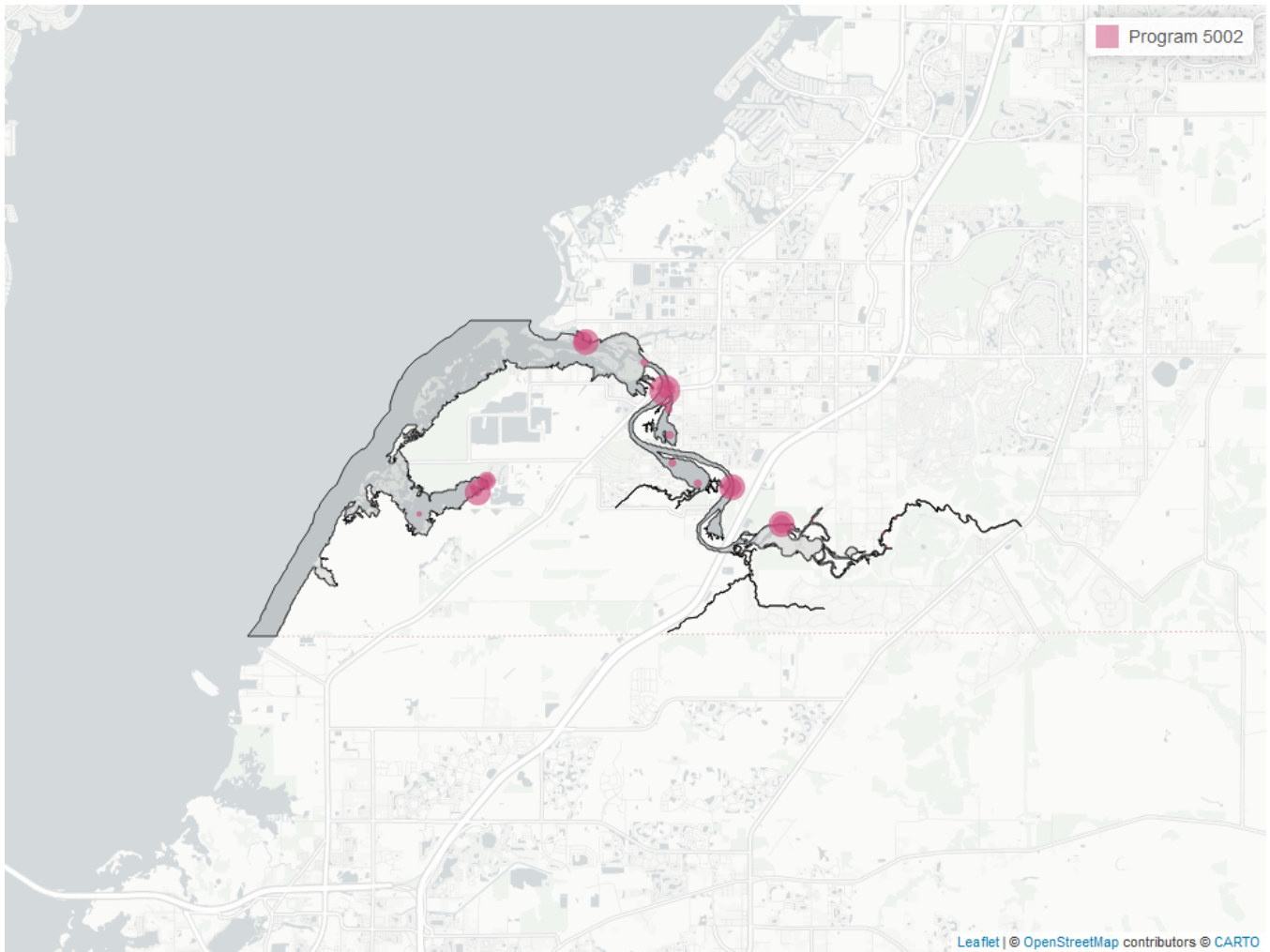


Figure 2: Map showing location of Discrete sampling sites for Chlorophyll a, Corrected for Pheophytin. The bubble size on the maps below reflect the amount of data available at each sampling site.

Table 7: Programs contributing data for Chlorophyll a, Corrected for Pheophytin

<i>ProgramID</i>	<i>N_Data</i>	<i>YearMin</i>	<i>YearMax</i>
5002	893	2000	2024

**Program names:**

5002 - Florida STORET / WIN<sup>1</sup>

**Chlorophyll a, Uncorrected for Pheophytin - Discrete Water Quality  
Seasonal Kendall-Tau Trend Analysis**

Chlorophyll a, Uncorrected for Pheophytin - Discrete, All Depths  
Cockroach Bay Aquatic Preserve

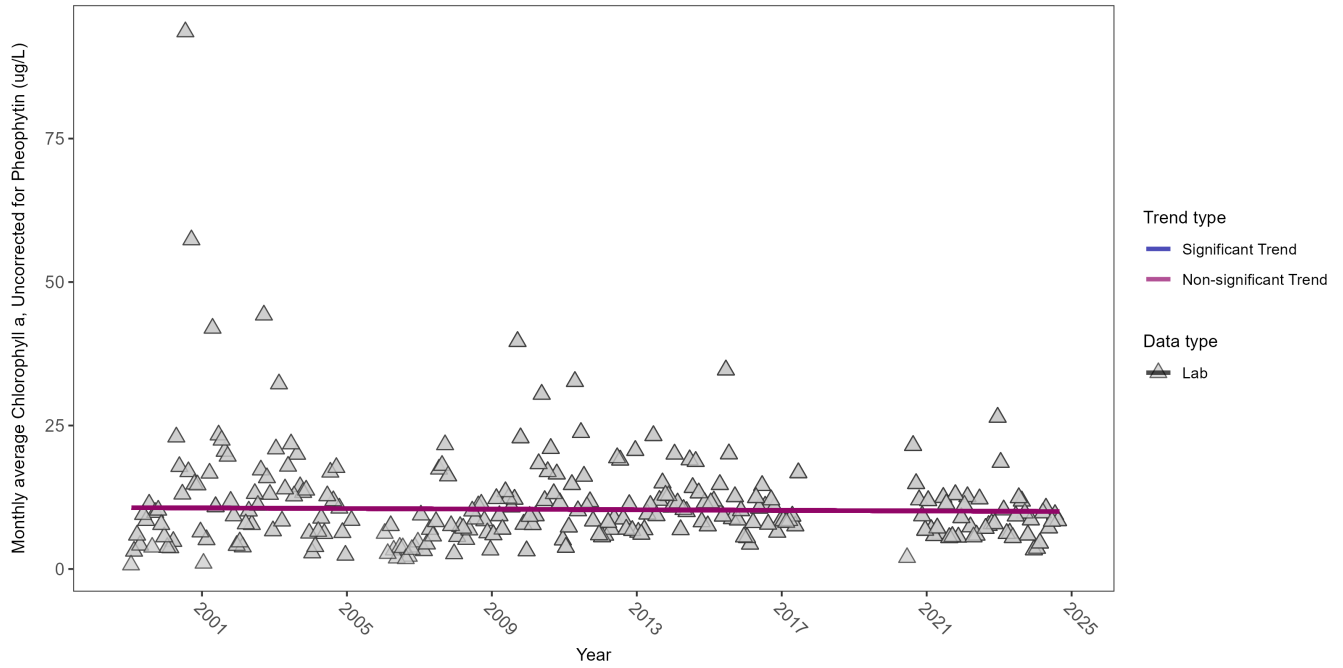


Figure 3: Seasonal Kendall-Tau Results for Chlorophyll a, Uncorrected for Pheophytin - Discrete

Table 8: Seasonal Kendall-Tau Trend Analysis for Chlorophyll a, Uncorrected for Pheophytin

RelativeDepth	N-Data	N-Years	Median	Independent	tau	p	SennSlope	SennIntercept	ChiSquared	pChiSquared	Trend
All	999	24	7.4	TRUE	-0.0343	0.4911	-0.0263	10.6936	25.2208	0.0085	0



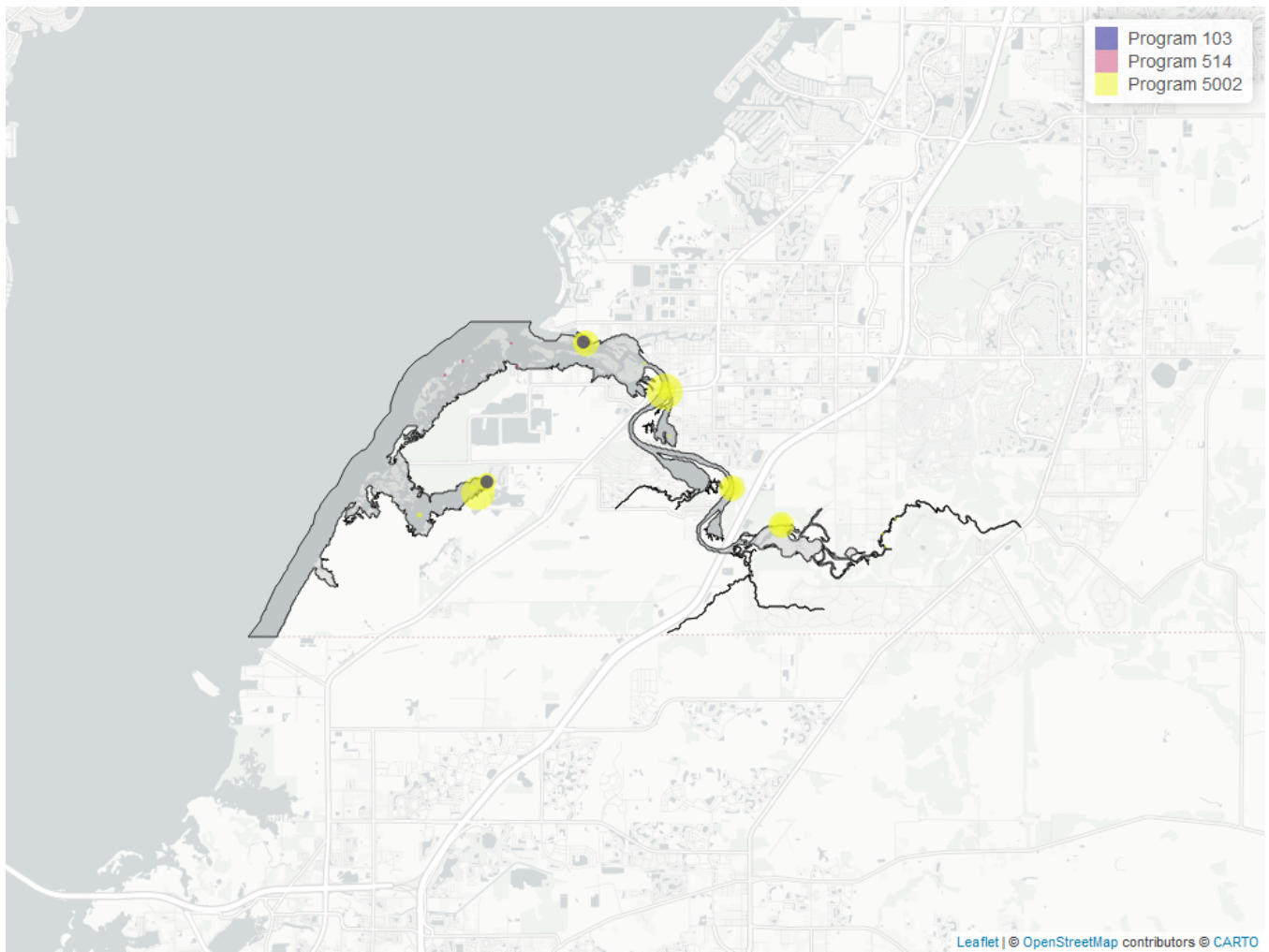


Figure 4: Map showing location of Discrete sampling sites for Chlorophyll a, Uncorrected for Pheophytin. The bubble size on the maps below reflect the amount of data available at each sampling site.

Table 9: Programs contributing data for Chlorophyll a, Uncorrected for Pheophytin

<i>ProgramID</i>	<i>N_Data</i>	<i>YearMin</i>	<i>YearMax</i>
5002	963	1999	2024
103	44	2020	2021
514	4	2001	2001

**Program names:**

*103* - EPA STORage and RETrieval Data Warehouse (STORET)/WQX<sup>2</sup>

*514* - Florida LAKEWATCH Program<sup>3</sup>

*5002* - Florida STORET / WIN<sup>1</sup>

**Colored Dissolved Organic Matter - Discrete Water Quality**

**Seasonal Kendall-Tau Trend Analysis**

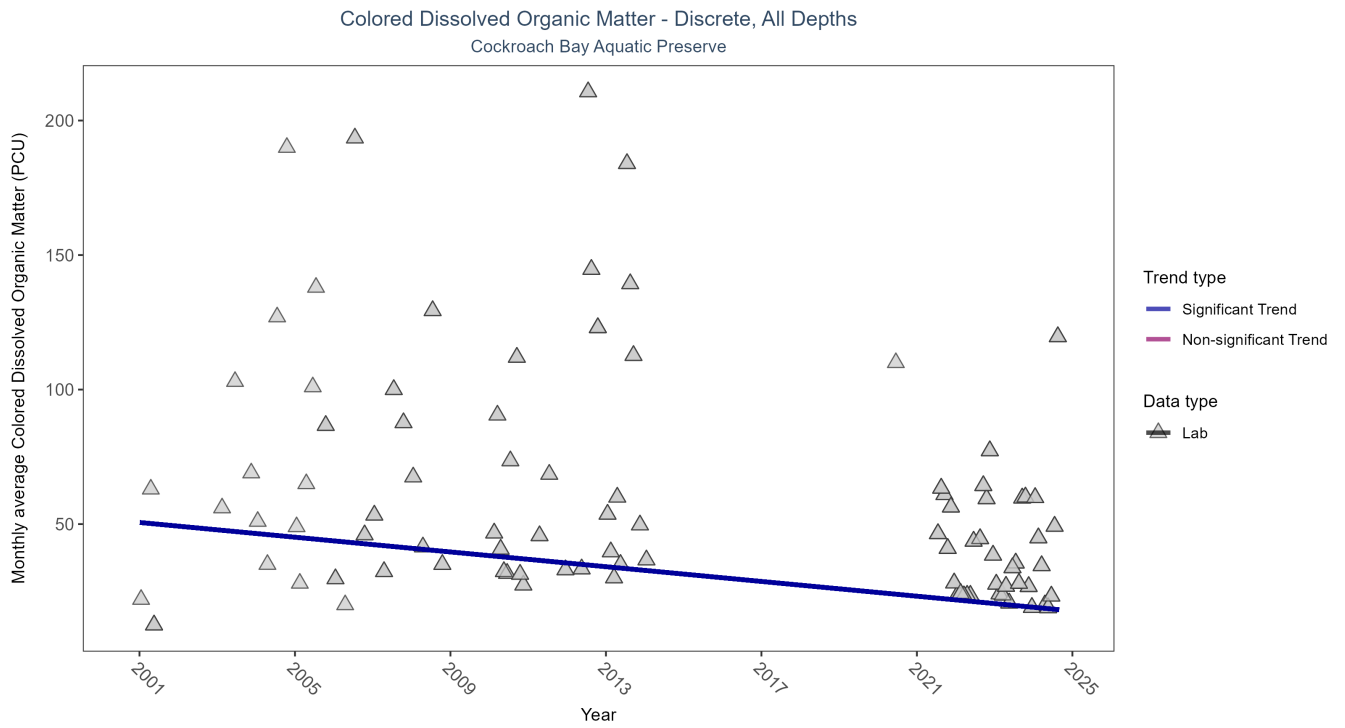


Figure 5: Seasonal Kendall-Tau Results for Colored Dissolved Organic Matter - Discrete

Table 10: Seasonal Kendall-Tau Trend Analysis for Colored Dissolved Organic Matter

RelativeDepth	N-Data	N-Years	Median	Independent	tau	p	SennSlope	SennIntercept	ChiSquared	pChiSquared	Trend
All	315	17	38	TRUE	-0.2822	0.0034	-1.3704	50.6076	5.7156	0.8917	-1

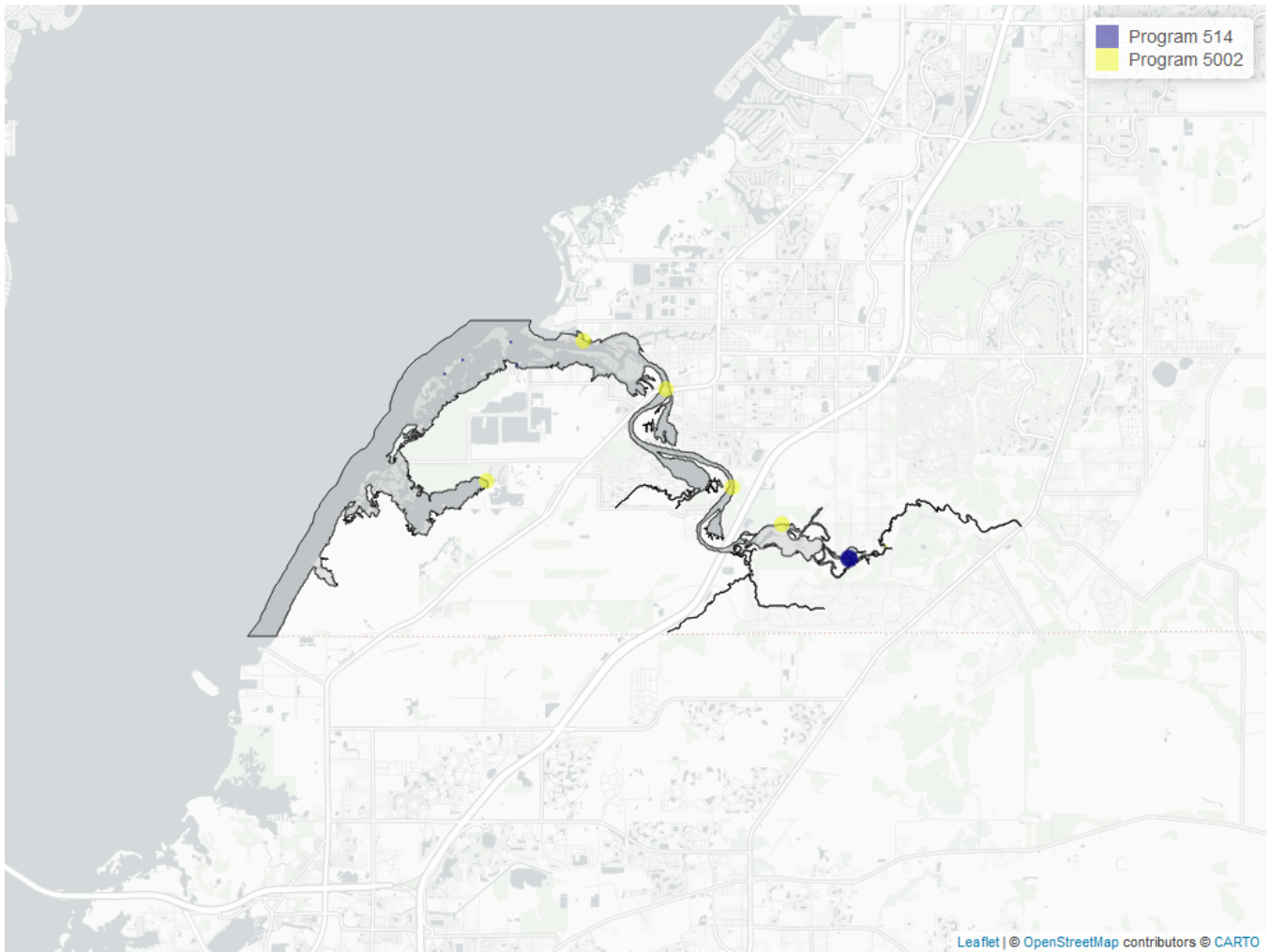


Figure 6: Map showing location of Discrete sampling sites for Colored Dissolved Organic Matter. The bubble size on the maps below reflect the amount of data available at each sampling site.

Table 11: Programs contributing data for Colored Dissolved Organic Matter

<i>ProgramID</i>	<i>N_Data</i>	<i>YearMin</i>	<i>YearMax</i>
5002	185	2020	2024
514	130	2001	2014

**Program names:**

514 - Florida LAKEWATCH Program<sup>3</sup>

5002 - Florida STORET / WIN<sup>1</sup>

**Dissolved Oxygen - Discrete Water Quality**

**Seasonal Kendall-Tau Trend Analysis**

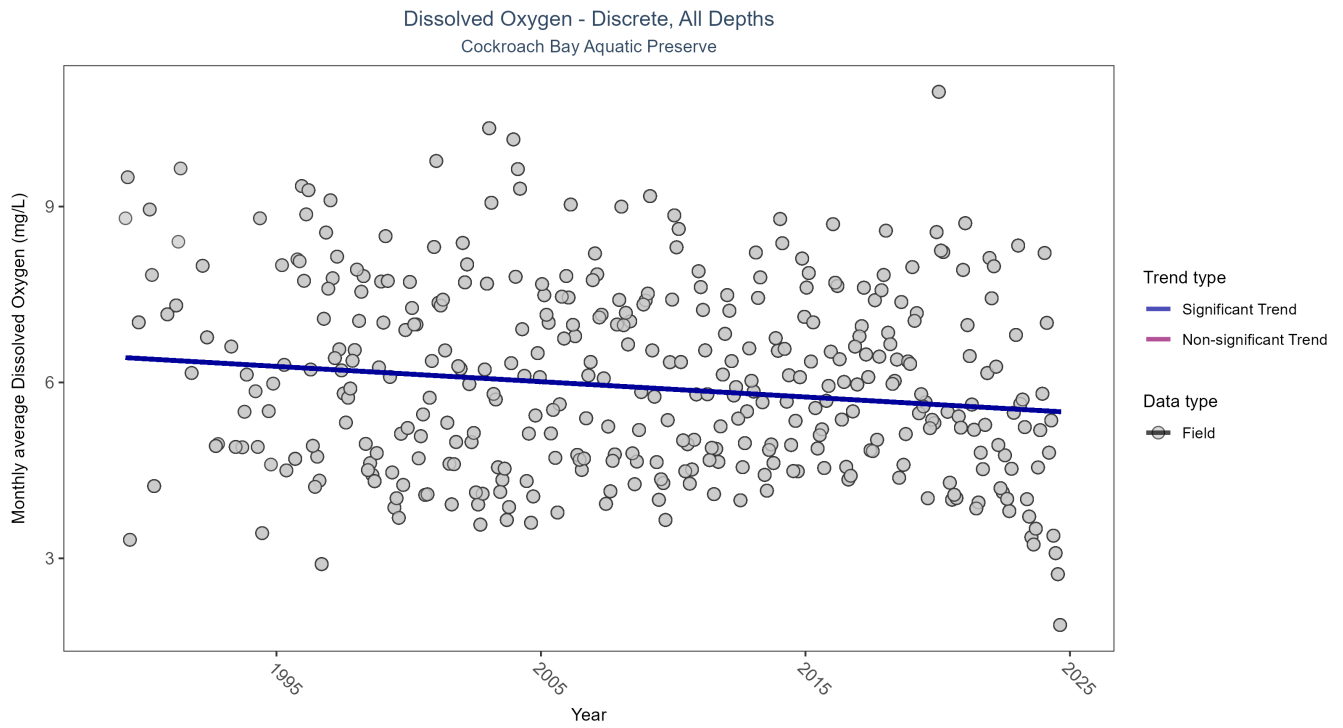


Figure 7: Seasonal Kendall-Tau Results for Dissolved Oxygen - Discrete

Table 12: Seasonal Kendall-Tau Trend Analysis for Dissolved Oxygen

RelativeDepth	N-Data	N-Years	Median	Independent	tau	p	SennSlope	SennIntercept	ChiSquared	pChiSquared	Trend
All	25034	36	5.3	TRUE	-0.1782	0	-0.0261	6.4306	14.2511	0.2194	-1

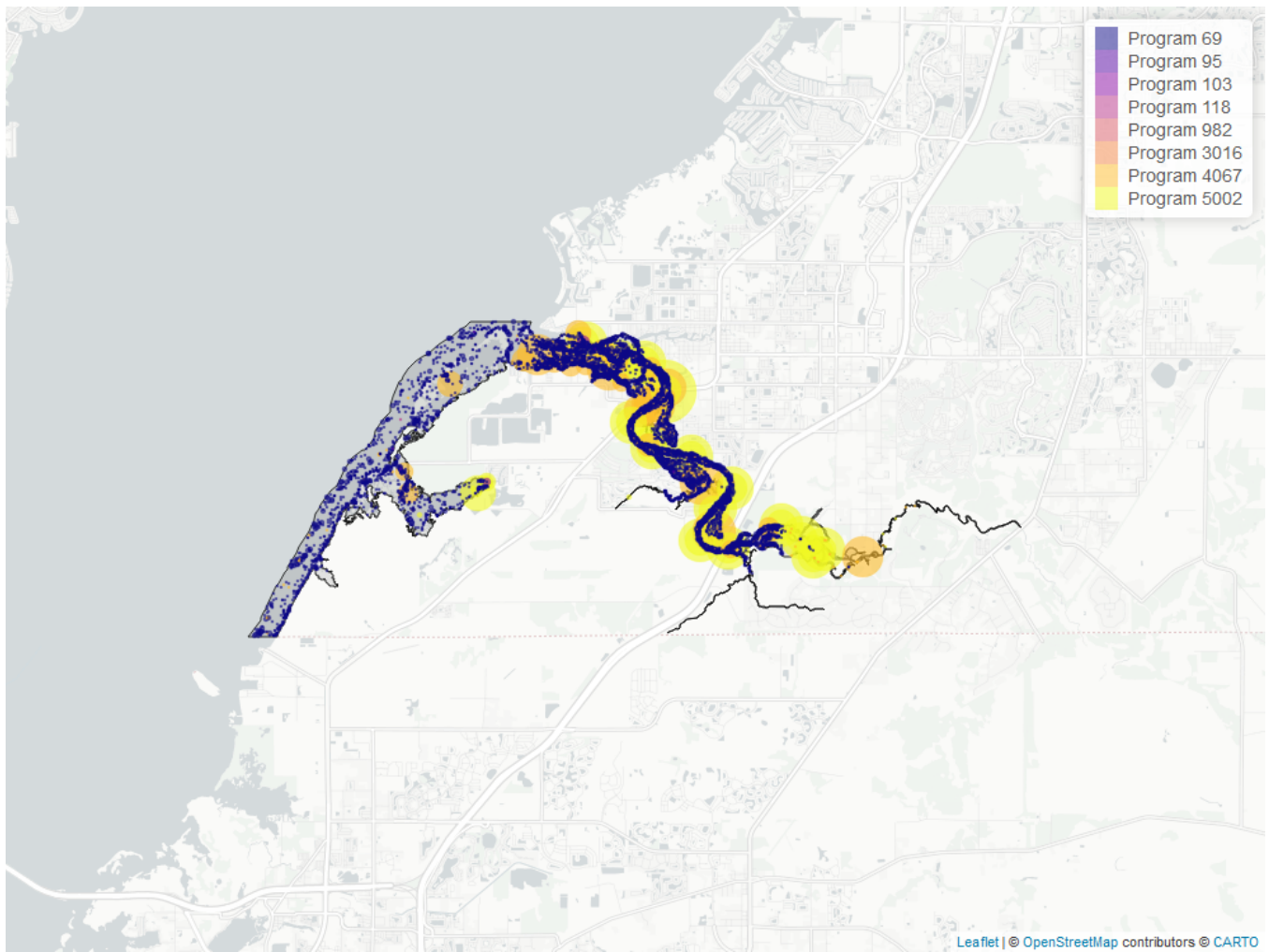


Figure 8: Map showing location of Discrete sampling sites for Dissolved Oxygen. The bubble size on the maps below reflect the amount of data available at each sampling site.

Table 13: Programs contributing data for Dissolved Oxygen

<i>ProgramID</i>	<i>N_Data</i>	<i>YearMin</i>	<i>YearMax</i>
69	14036	1989	2022
5002	7251	1999	2024
4067	4024	1993	2022
103	41	2020	2021
95	8	2005	2014
118	2	2015	2015

**Program names:**

69 - Fisheries-Independent Monitoring (FIM) Program<sup>4</sup>

95 - Harmful Algal Bloom Marine Observation Network<sup>5</sup>

103 - EPA STORage and RETrieval Data Warehouse (STORET)/WQX<sup>2</sup>

118 - National Aquatic Resource Surveys, National Coastal Condition Assessment<sup>6</sup>

4067 - Tampa Bay Benthic Monitoring<sup>7</sup>

5002 - Florida STORET / WIN<sup>1</sup>

# Dissolved Oxygen Saturation - Discrete Water Quality

## Seasonal Kendall-Tau Trend Analysis

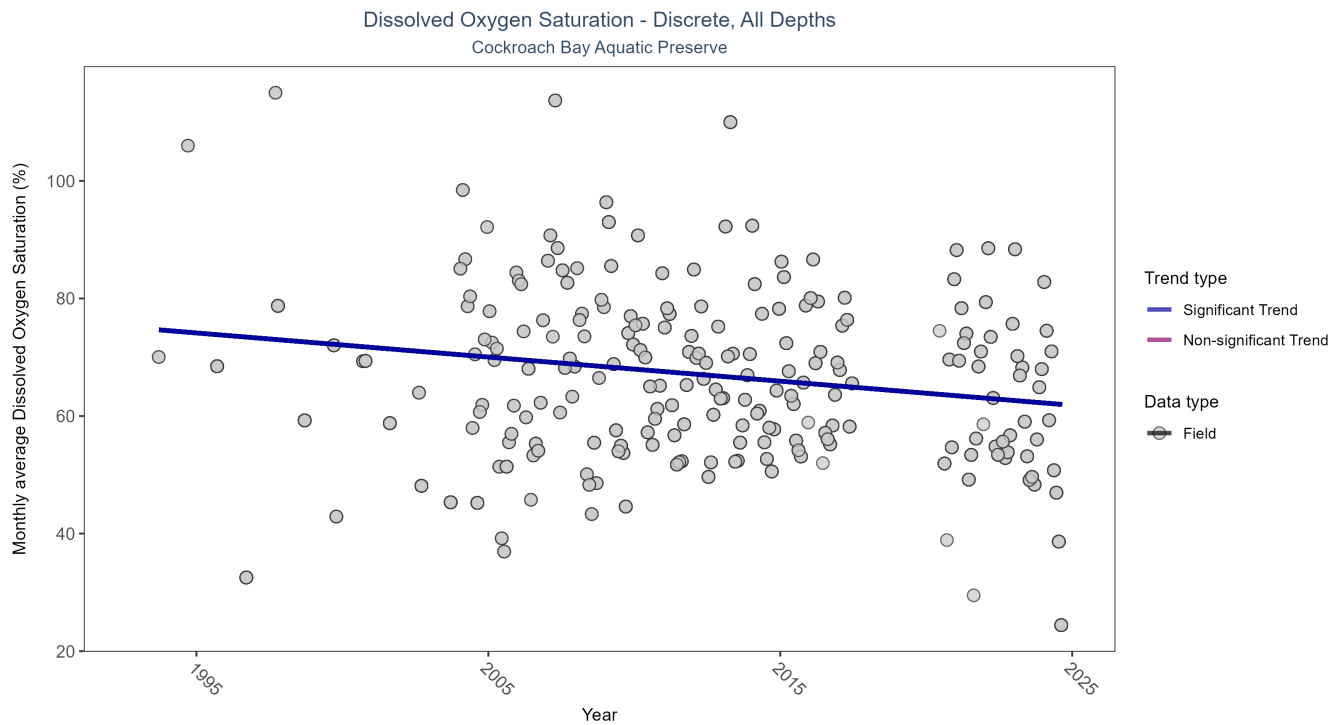


Figure 9: Seasonal Kendall-Tau Results for Dissolved Oxygen Saturation - Discrete

Table 14: Seasonal Kendall-Tau Trend Analysis for Dissolved Oxygen Saturation

RelativeDepth	N-Data	N-Years	Median	Independent	tau	p	SennSlope	SennIntercept	ChiSquared	pChiSquared	Trend
All	10790	30	58.9	TRUE	-0.1902	0.0001	-0.4102	74.9539	8.4691	0.6708	-1

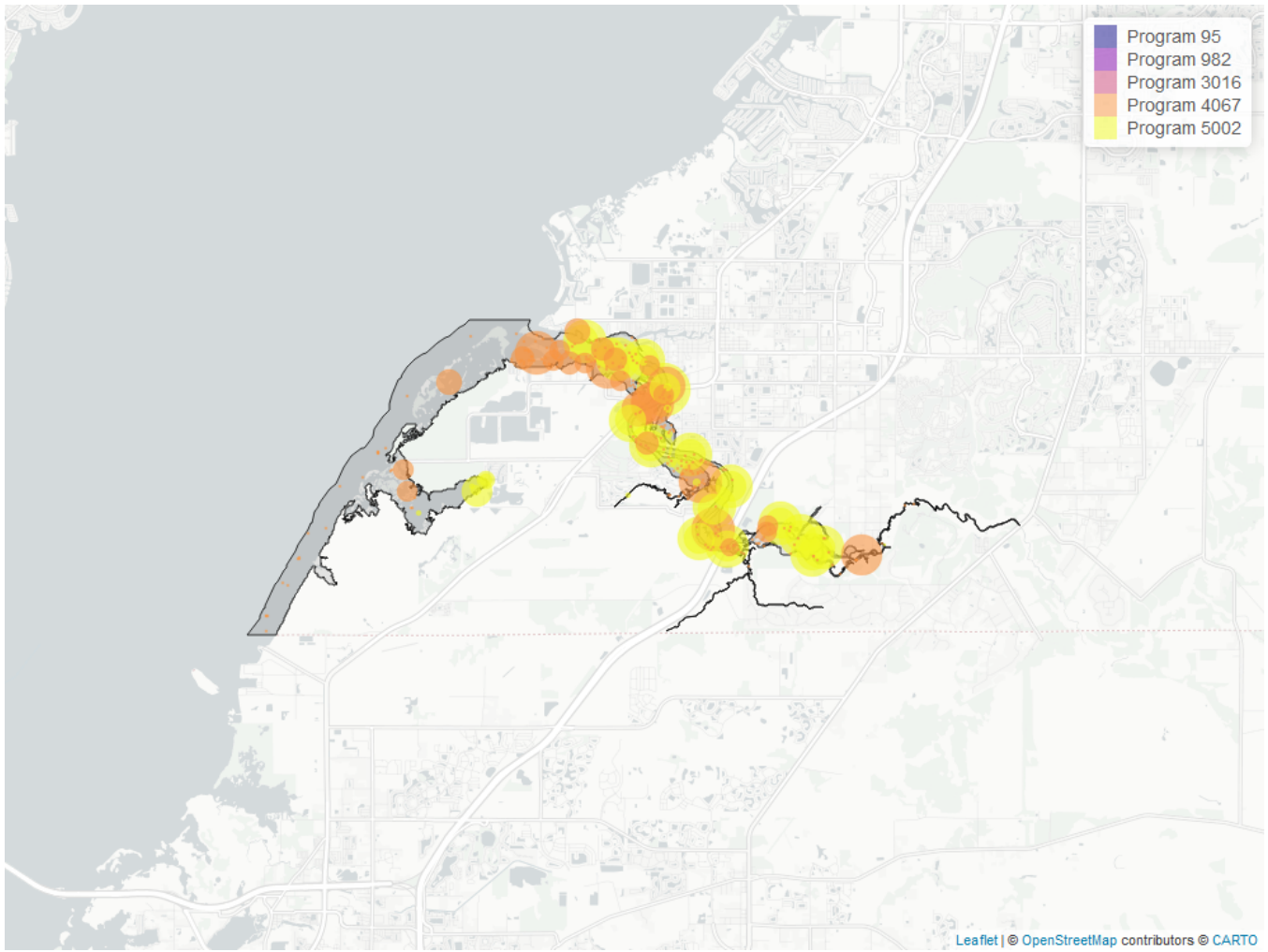


Figure 10: Map showing location of Discrete sampling sites for Dissolved Oxygen Saturation. The bubble size on the maps below reflect the amount of data available at each sampling site.

Table 15: Programs contributing data for Dissolved Oxygen Saturation

<i>ProgramID</i>	<i>N_Data</i>	<i>YearMin</i>	<i>YearMax</i>
5002	7010	2004	2024
4067	4107	1993	2022

**Program names:**

4067 - Tampa Bay Benthic Monitoring<sup>7</sup>  
 5002 - Florida STORET / WIN<sup>1</sup>

**pH - Discrete Water Quality**

**Seasonal Kendall-Tau Trend Analysis**

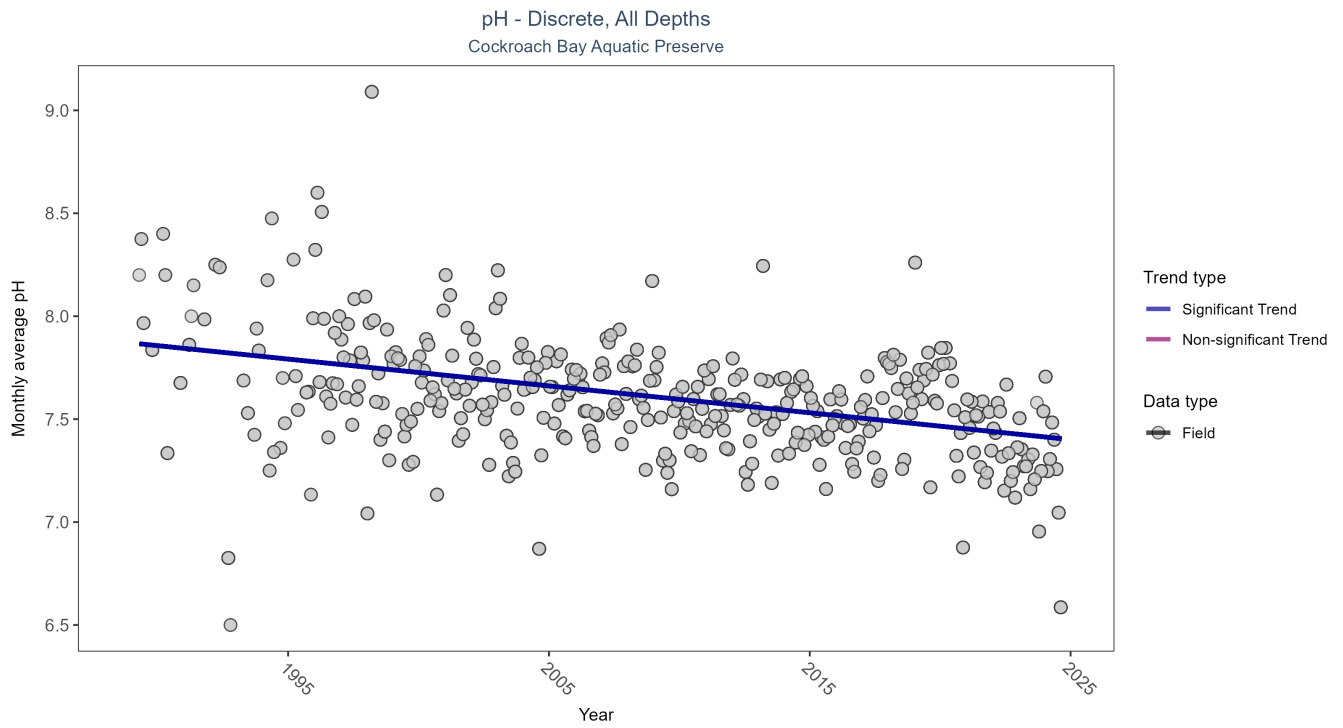


Figure 11: Seasonal Kendall-Tau Results for pH - Discrete

Table 16: Seasonal Kendall-Tau Trend Analysis for pH

RelativeDepth	N-Data	N-Years	Median	Independent	tau	p	SennSlope	SennIntercept	ChiSquared	pChiSquared	Trend
All	24253	36	7.5	TRUE	-0.3422	0	-0.013	7.87	19.8896	0.0469	-1



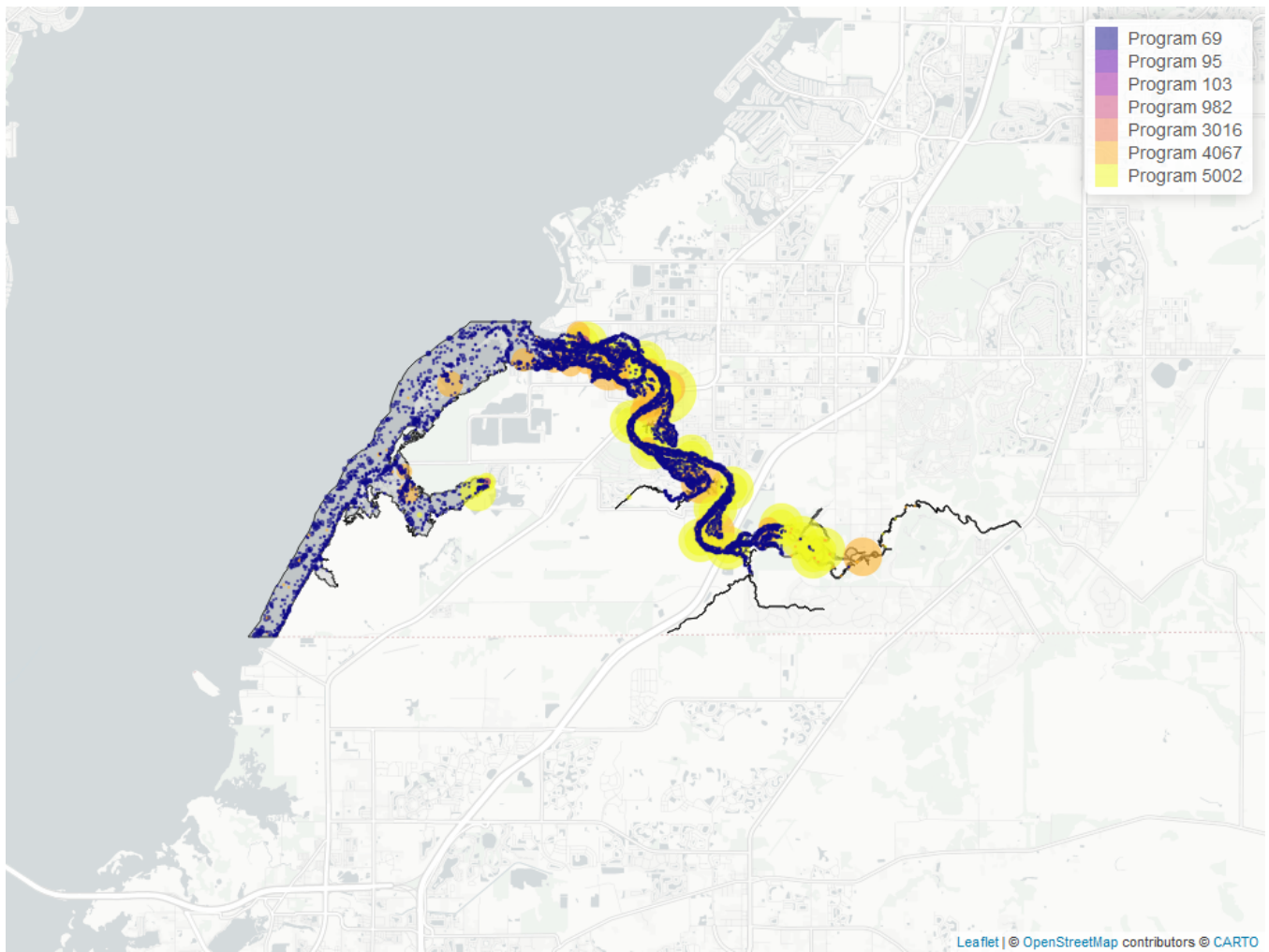


Figure 12: Map showing location of Discrete sampling sites for pH. The bubble size on the maps below reflect the amount of data available at each sampling site.

Table 17: Programs contributing data for pH

<i>ProgramID</i>	<i>N_Data</i>	<i>YearMin</i>	<i>YearMax</i>
69	14037	1989	2022
5002	7242	1999	2024
4067	3078	1993	2022
103	41	2020	2021
95	1	2011	2011

**Program names:**

- 69 - Fisheries-Independent Monitoring (FIM) Program<sup>4</sup>
- 95 - Harmful Algal Bloom Marine Observation Network<sup>5</sup>
- 103 - EPA STORage and RETrieval Data Warehouse (STORET)/WQX<sup>2</sup>
- 4067 - Tampa Bay Benthic Monitoring<sup>7</sup>
- 5002 - Florida STORET / WIN<sup>1</sup>

**Salinity - Discrete Water Quality**

**Seasonal Kendall-Tau Trend Analysis**

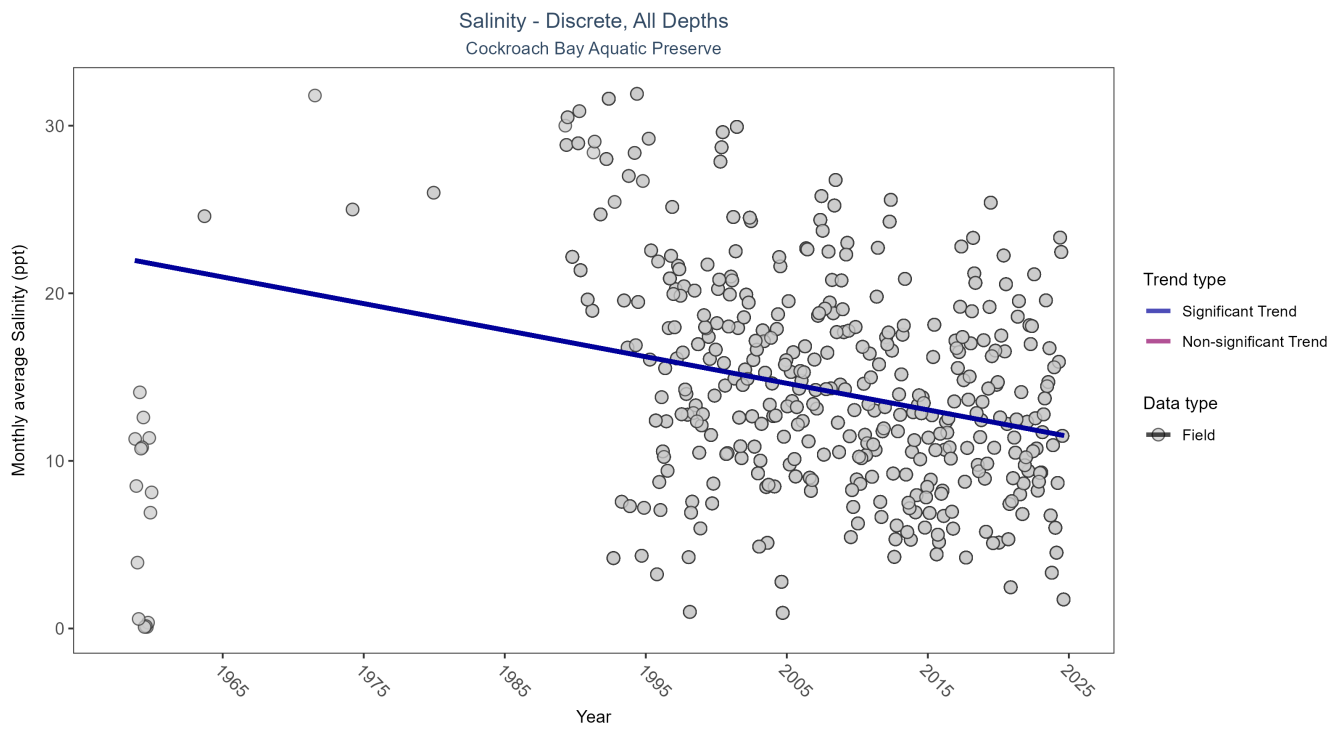


Figure 13: Seasonal Kendall-Tau Results for Salinity - Discrete

Table 18: Seasonal Kendall-Tau Trend Analysis for Salinity

RelativeDepth	N-Data	N-Years	Median	Independent	tau	p	SennSlope	SennIntercept	ChiSquared	pChiSquared	Trend
All	25076	42	12.1	TRUE	-0.1757	0	-0.1585	22.0799	7.4953	0.7577	-1

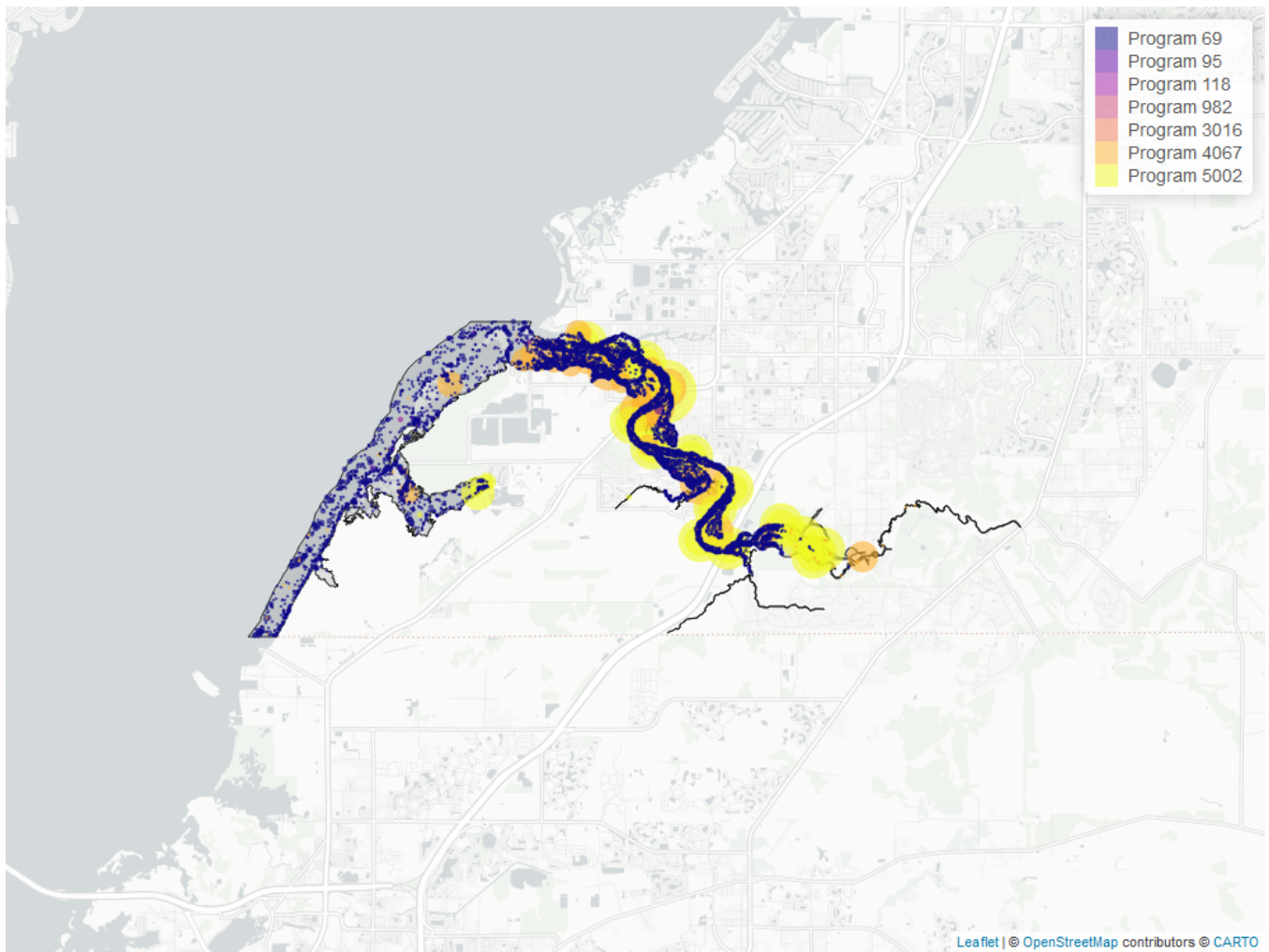


Figure 14: Map showing location of Discrete sampling sites for Salinity. The bubble size on the maps below reflect the amount of data available at each sampling site.

Table 19: Programs contributing data for Salinity

<i>ProgramID</i>	<i>N_Data</i>	<i>YearMin</i>	<i>YearMax</i>
69	14115	1989	2022
5002	7239	1999	2024
4067	3742	1993	2022
95	32	1958	2014
118	3	2015	2015

**Program names:**

- 69 - Fisheries-Independent Monitoring (FIM) Program<sup>4</sup>
- 95 - Harmful Algal Bloom Marine Observation Network<sup>5</sup>
- 118 - National Aquatic Resource Surveys, National Coastal Condition Assessment<sup>6</sup>
- 4067 - Tampa Bay Benthic Monitoring<sup>7</sup>
- 5002 - Florida STORET / WIN<sup>1</sup>

**Secchi Depth - Discrete Water Quality**

**Seasonal Kendall-Tau Trend Analysis**

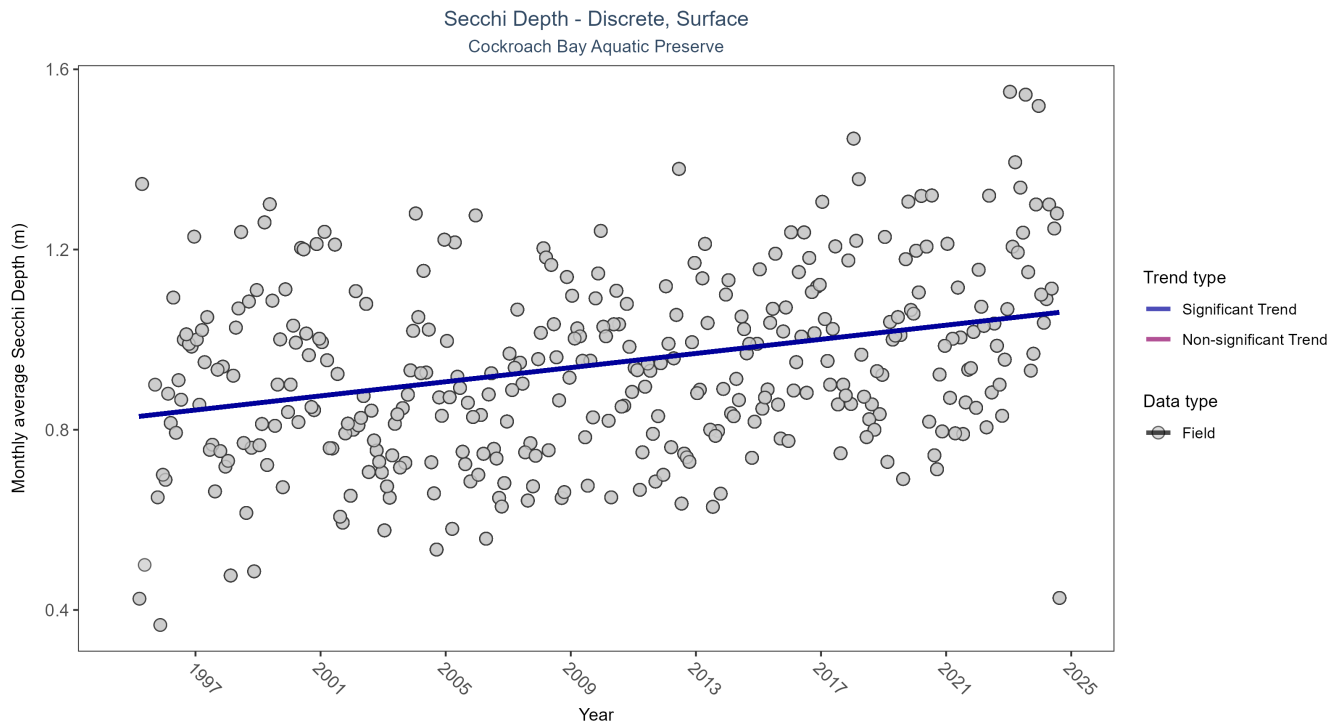


Figure 15: Seasonal Kendall-Tau Results for Secchi Depth - Discrete

Table 20: Seasonal Kendall-Tau Trend Analysis for Secchi Depth

RelativeDepth	N-Data	N-Years	Median	Independent	tau	p	SennSlope	SennIntercept	ChiSquared	pChiSquared	Trend
Surface	13943	30	0.8	TRUE	0.2255	0	0.0078	0.8281	14.7031	0.1965	1

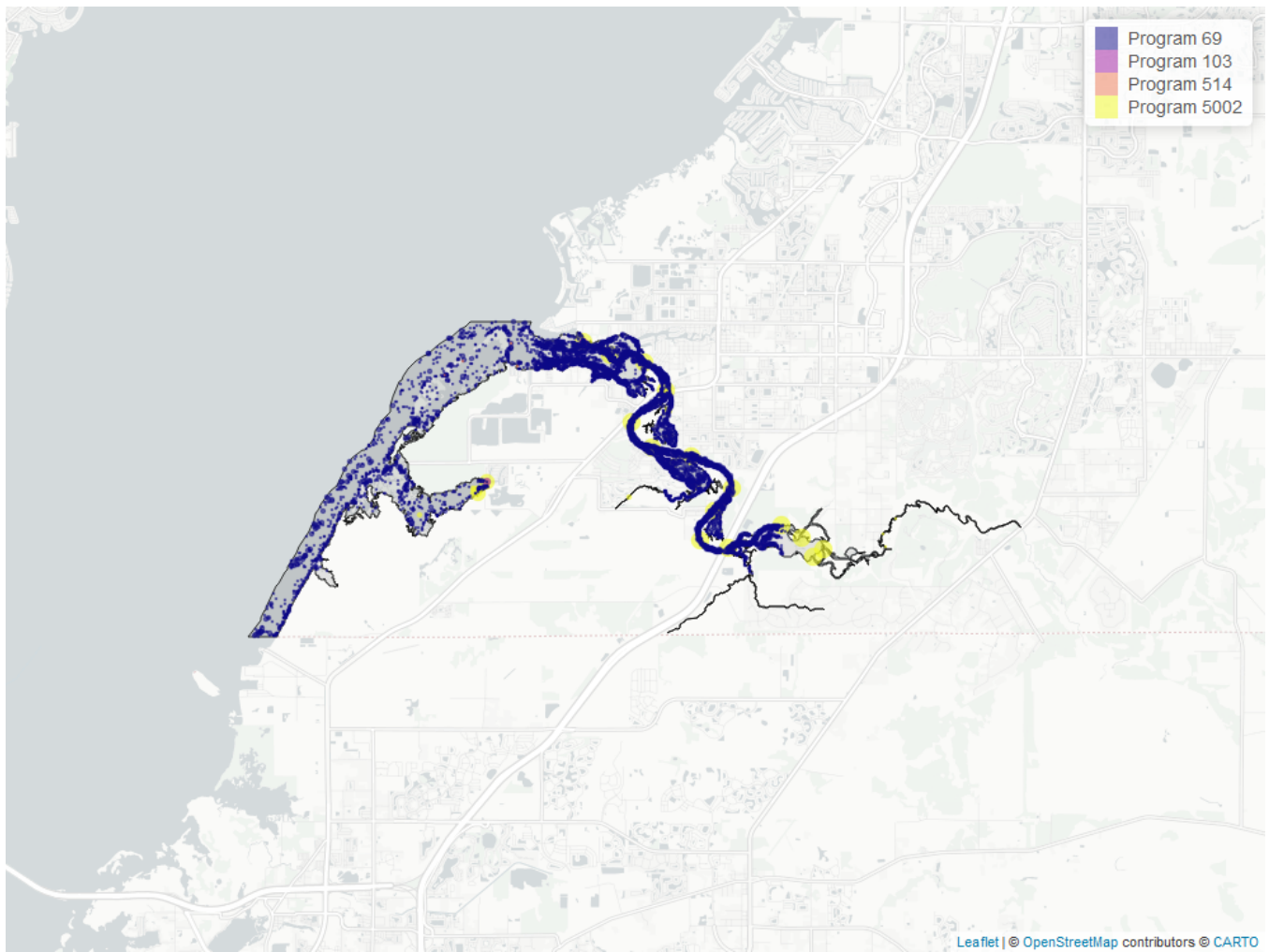


Figure 16: Map showing location of Discrete sampling sites for Secchi Depth. The bubble size on the maps below reflect the amount of data available at each sampling site.

Table 21: Programs contributing data for Secchi Depth

<i>ProgramID</i>	<i>N_Data</i>	<i>YearMin</i>	<i>YearMax</i>
69	13041	1995	2022
5002	876	1999	2024
103	22	2020	2021
514	4	2001	2001

**Program names:**

69 - Fisheries-Independent Monitoring (FIM) Program<sup>4</sup>

103 - EPA STORage and RETrieval Data Warehouse (STORET)/WQX<sup>2</sup>

514 - Florida LAKEWATCH Program<sup>3</sup>

5002 - Florida STORET / WIN<sup>1</sup>

**Total Nitrogen - Discrete Water Quality**

**Total Nitrogen Calculation:**

The logic for calculated Total Nitrogen was provided by Kevin O'Donnell and colleagues at FDEP (with the help of Jay Silvanima, Watershed Monitoring Section). The following logic is used, in this order, based on the availability of specific nitrogen components.

- 1)  $TN = TKN + NO3O2$ ;
- 2)  $TN = TKN + NO3 + NO2$ ;
- 3)  $TN = ORGN + NH4 + NO3O2$ ;
- 4)  $TN = ORGN + NH4 + NO2 + NO3$ ;
- 5)  $TN = TKN + NO3$ ;
- 6)  $TN = ORGN + NH4 + NO3$ ;

Additional Information:

- Rules for use of sample fraction:
  - Florida Department of Environmental Protection (FDEP) report that if both “Total” and “Dissolved” components are reported, only “Total” is used. If the total is not reported, then the dissolved components are used as a best available replacement.
  - Total nitrogen calculations are done using nitrogen components with the same sample fraction, nitrogen components with mixed total/dissolved sample fractions are not used. In other words, total nitrogen can be calculated when TKN and NO3O2 are both total sample fractions, or when both are dissolved sample fractions. *Future calculations of total nitrogen values may be based on components with mixed sample fractions.*
- Values inserted into data:
  - ParameterName = “Total Nitrogen”
  - SEACAR\_QAQCFlagCode = “1Q”
  - SEACAR\_QAQC\_Description = “SEACAR Calculated”

### Seasonal Kendall-Tau Trend Analysis

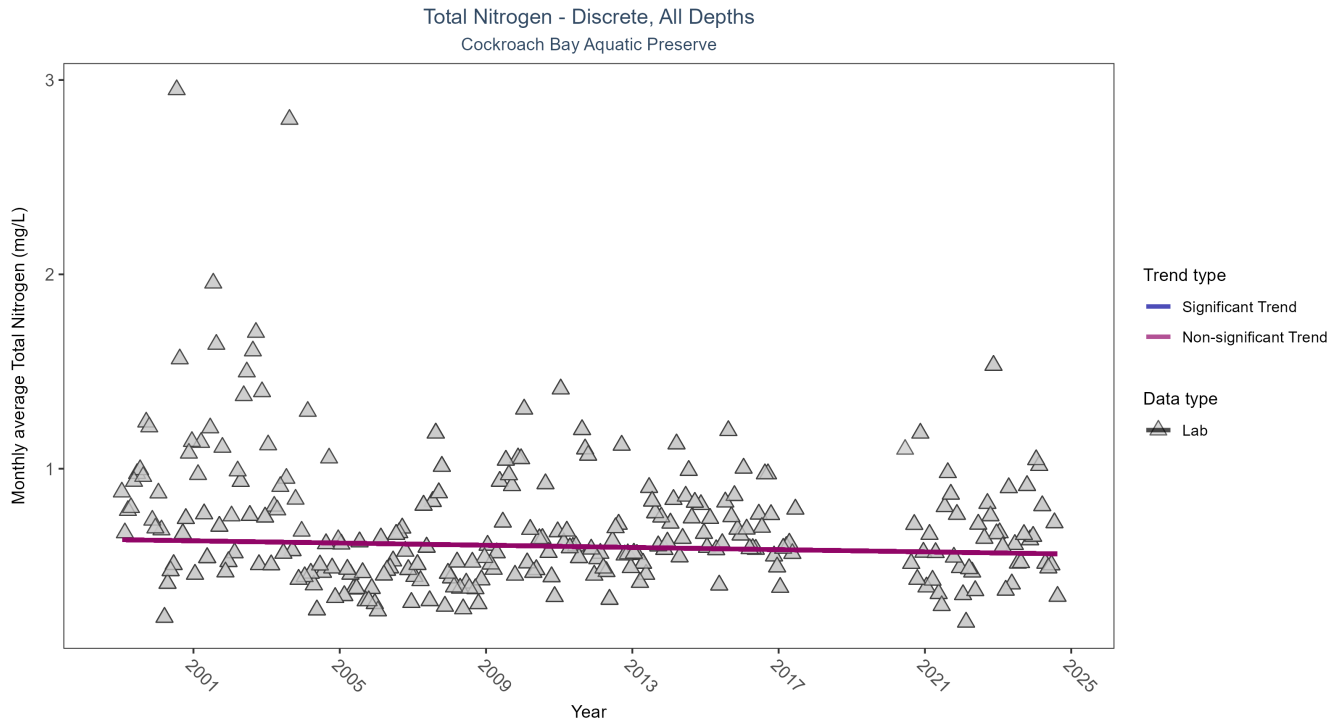


Figure 17: Seasonal Kendall-Tau Results for Total Nitrogen - Discrete

Table 22: Seasonal Kendall-Tau Trend Analysis for Total Nitrogen

RelativeDepth	N-Data	N-Years	Median	Independent	tau	p	SennSlope	SennIntercept	ChiSquared	pChiSquared	Trend
All	1458	24	0.618	TRUE	-0.0662	0.1353	-0.0028	0.6346	9.3069	0.5936	0

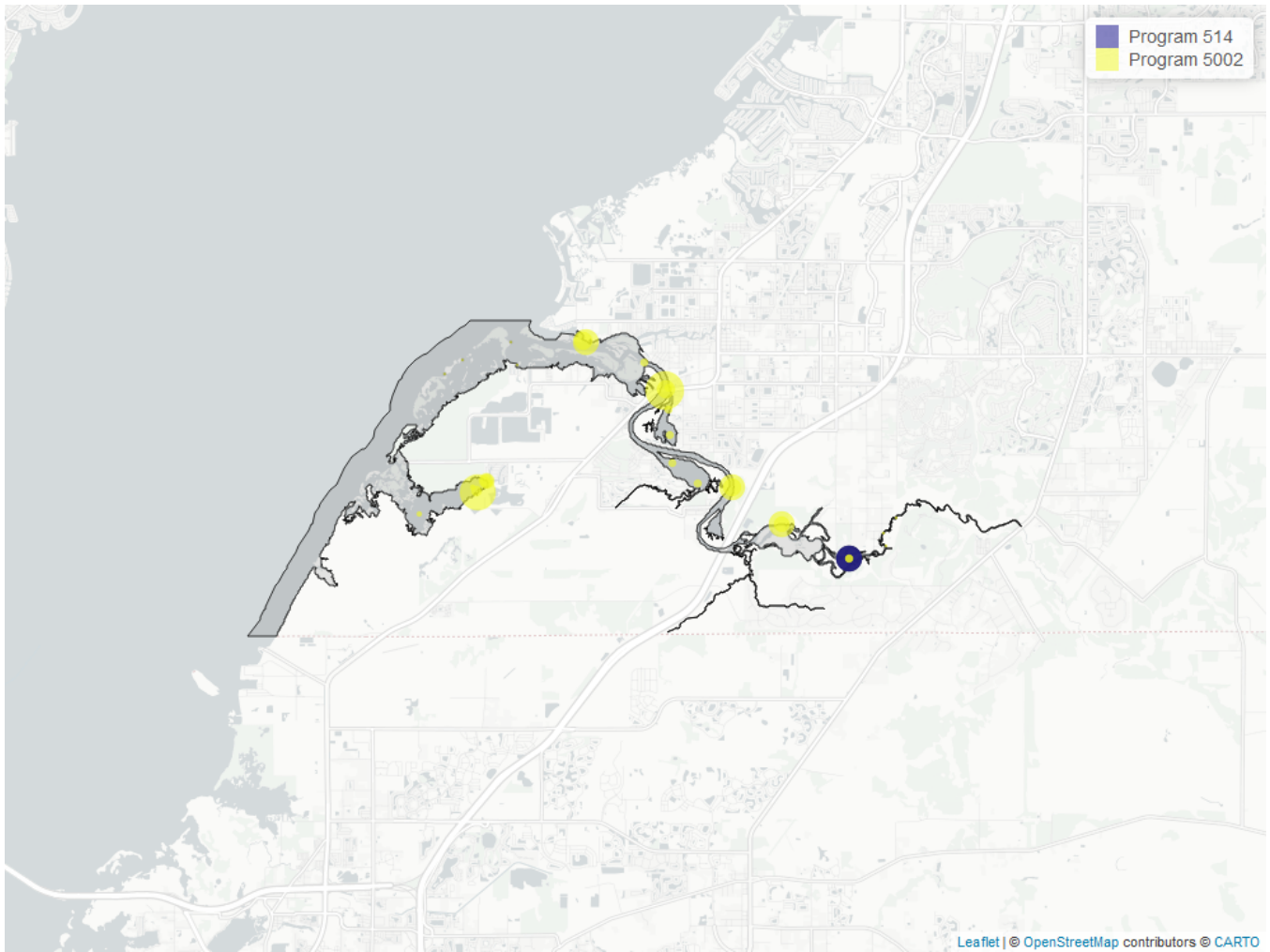


Figure 18: Map showing location of Discrete sampling sites for Total Nitrogen. The bubble size on the maps below reflect the amount of data available at each sampling site.

Table 23: Programs contributing data for Total Nitrogen

<i>ProgramID</i>	<i>N_Data</i>	<i>YearMin</i>	<i>YearMax</i>
5002	1167	1999	2024
514	300	2000	2014

**Program names:**

514 - Florida LAKEWATCH Program<sup>3</sup>

5002 - Florida STORET / WIN<sup>1</sup>

**Total Phosphorus - Discrete Water Quality**

**Seasonal Kendall-Tau Trend Analysis**



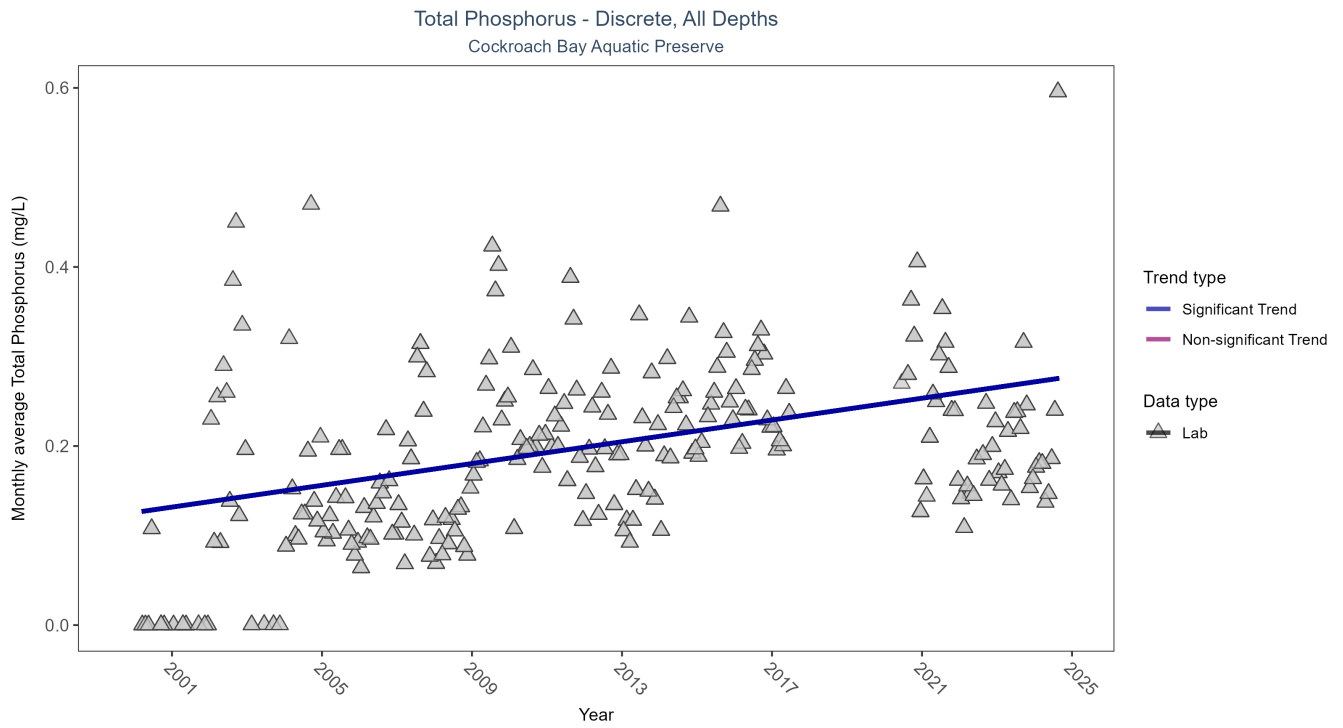


Figure 19: Seasonal Kendall-Tau Results for Total Phosphorus - Discrete

Table 24: Seasonal Kendall-Tau Trend Analysis for Total Phosphorus

RelativeDepth	N-Data	N-Years	Median	Independent	tau	p	SennSlope	SennIntercept	ChiSquared	pChiSquared	Trend
All	1285	23	0.203	TRUE	0.3389	0	0.0061	0.1257	4.1797	0.9644	1

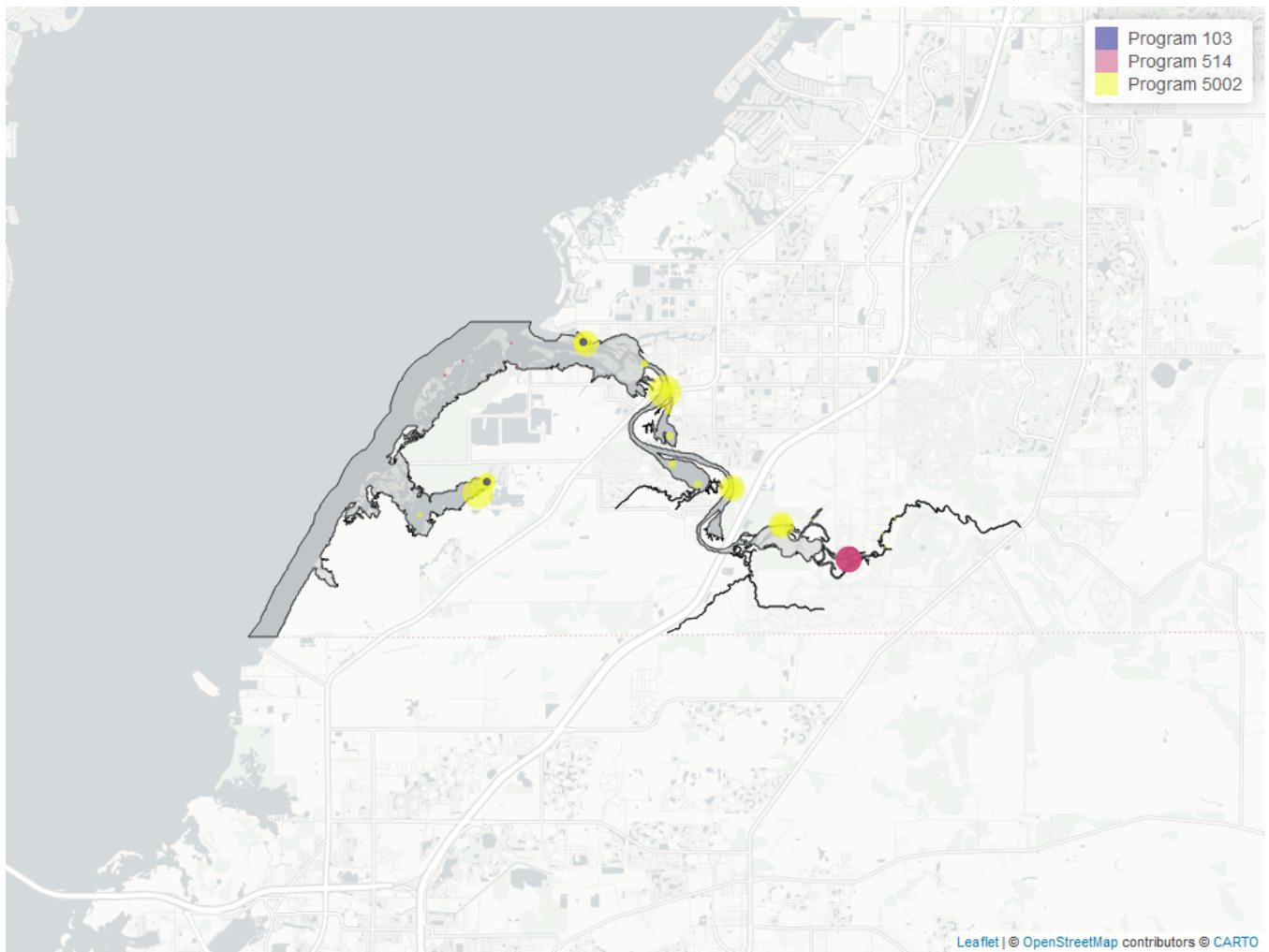


Figure 20: Map showing location of Discrete sampling sites for Total Phosphorus. The bubble size on the maps below reflect the amount of data available at each sampling site.

Table 25: Programs contributing data for Total Phosphorus

<i>ProgramID</i>	<i>N_Data</i>	<i>YearMin</i>	<i>YearMax</i>
5002	976	2000	2024
514	304	2000	2014
103	22	2020	2021

**Program names:**

103 - EPA STOrage and RETrieval Data Warehouse (STORET)/WQX<sup>2</sup>

514 - Florida LAKEWATCH Program<sup>3</sup>

5002 - Florida STORET / WIN<sup>1</sup>

**Total Suspended Solids - Discrete Water Quality**

**Seasonal Kendall-Tau Trend Analysis**

Total Suspended Solids - Discrete, All Depths  
Cockroach Bay Aquatic Preserve

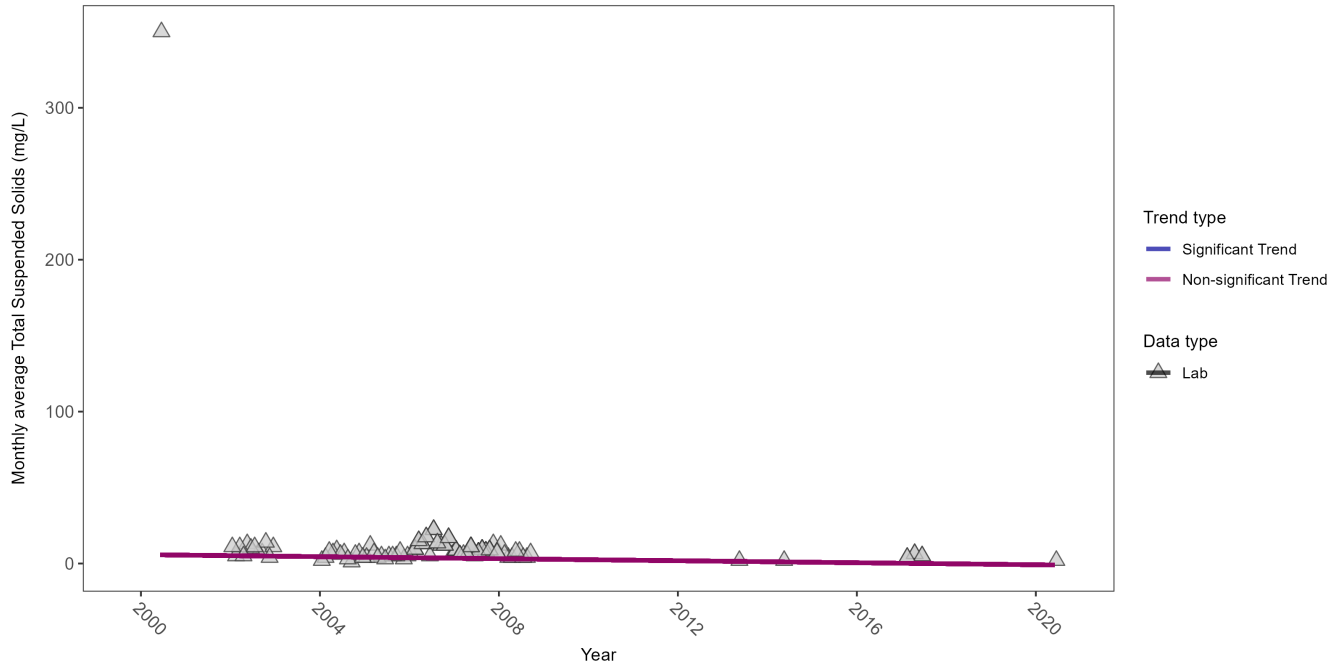


Figure 21: Seasonal Kendall-Tau Results for Total Suspended Solids - Discrete

Table 26: Seasonal Kendall-Tau Trend Analysis for Total Suspended Solids

RelativeDepth	N-Data	N-Years	Median	Independent	tau	p	SennSlope	SennIntercept	ChiSquared	pChiSquared	Trend
All	155	11	7	TRUE	-0.0987	0.1349	-0.3333	5.8429	14.1731	0.2236	0

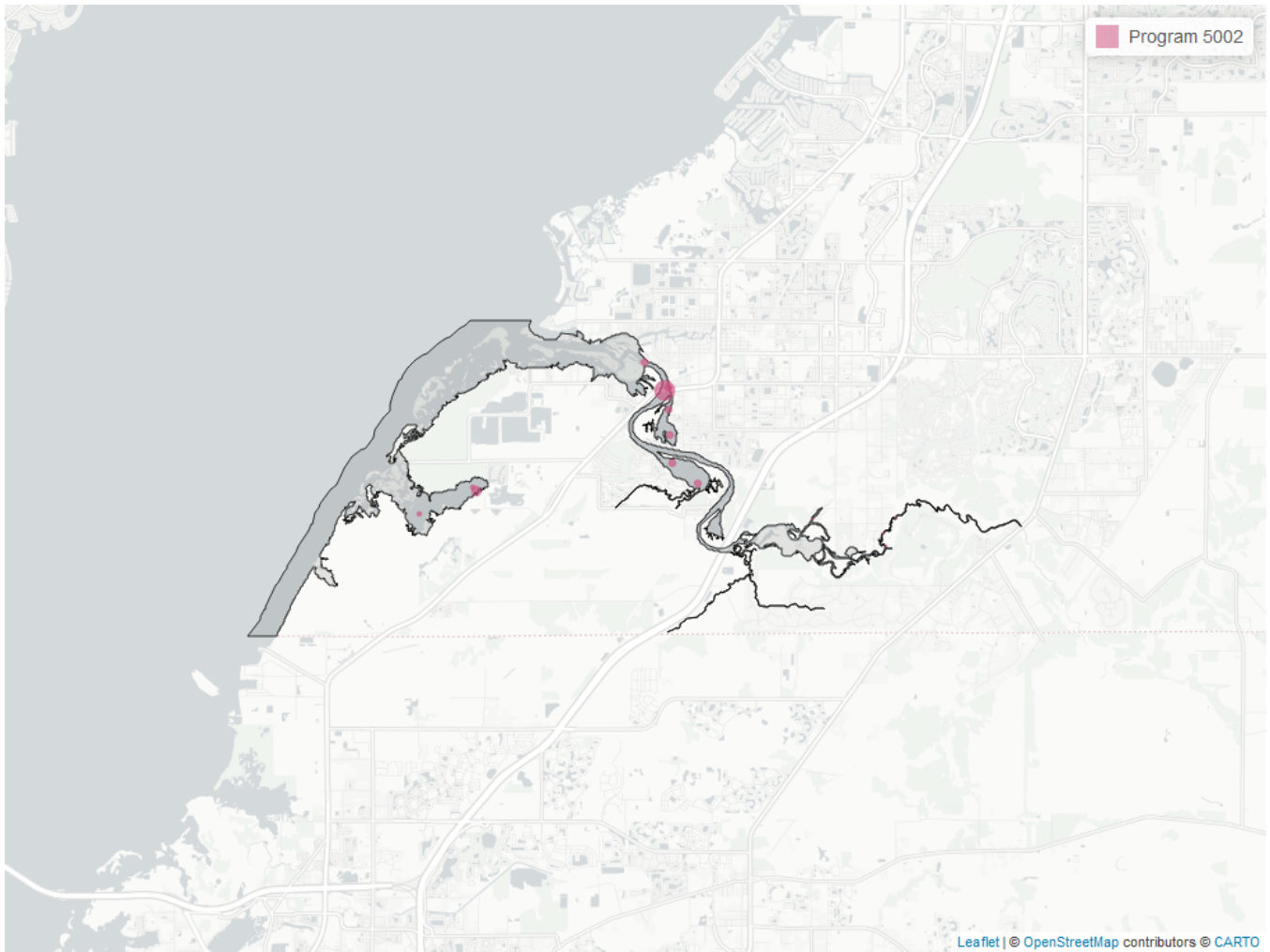


Figure 22: Map showing location of Discrete sampling sites for Total Suspended Solids. The bubble size on the maps below reflect the amount of data available at each sampling site.

Table 27: Programs contributing data for Total Suspended Solids

<i>ProgramID</i>	<i>N_Data</i>	<i>YearMin</i>	<i>YearMax</i>
5002	155	2000	2020

**Program names:**

5002 - Florida STORET / WIN<sup>1</sup>

**Turbidity - Discrete Water Quality**

**Seasonal Kendall-Tau Trend Analysis**

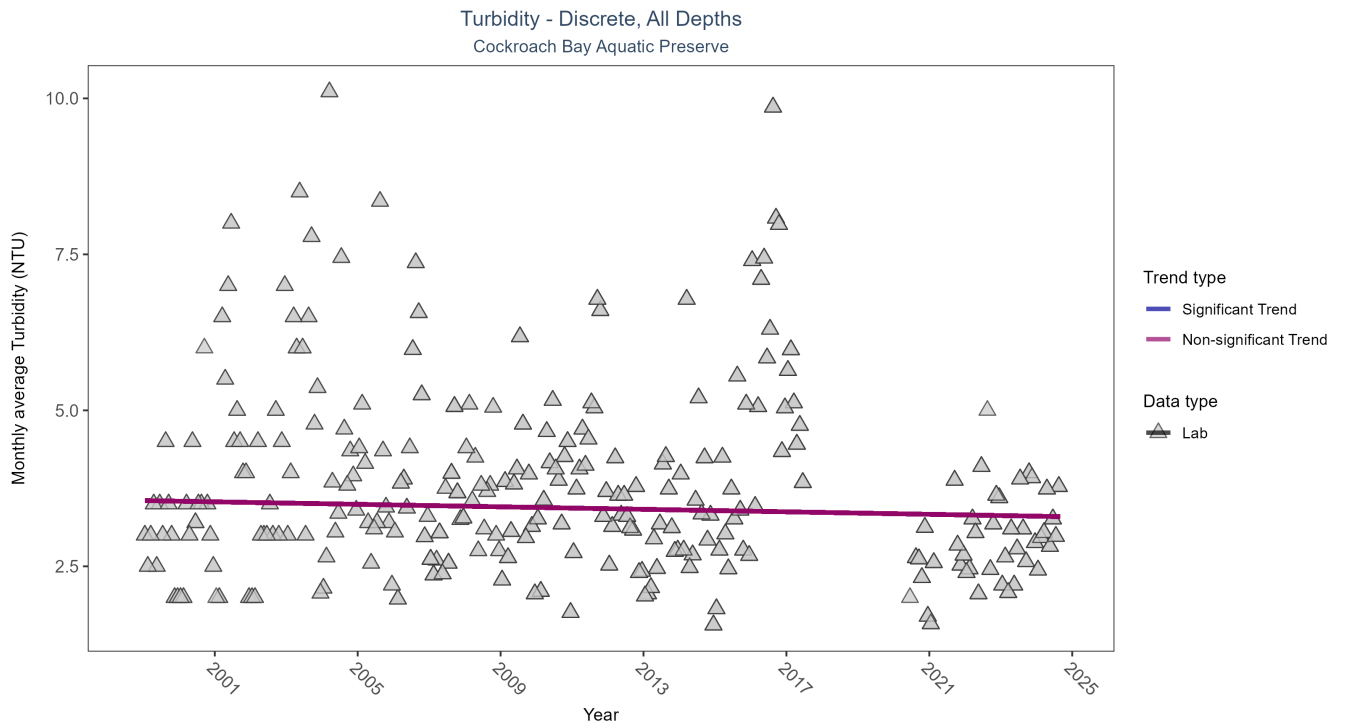


Figure 23: Seasonal Kendall-Tau Results for Turbidity - Discrete

Table 28: Seasonal Kendall-Tau Trend Analysis for Turbidity

RelativeDepth	N-Data	N-Years	Median	Independent	tau	p	SennSlope	SennIntercept	ChiSquared	pChiSquared	Trend
All	1030	24	3.1	TRUE	-0.0448	0.3159	-0.01	3.5537	8.5134	0.6667	0

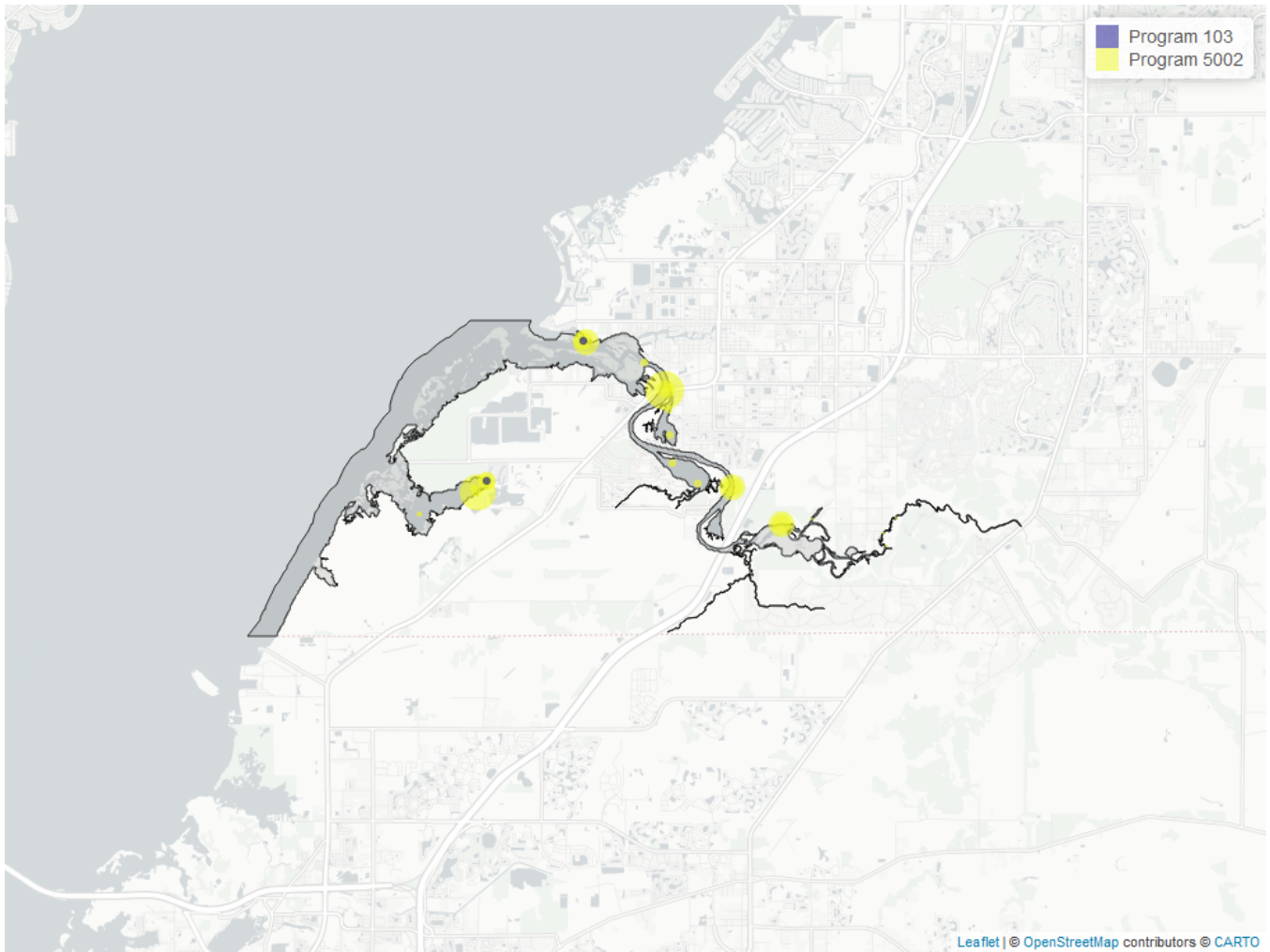


Figure 24: Map showing location of Discrete sampling sites for Turbidity. The bubble size on the maps below reflect the amount of data available at each sampling site.

Table 29: Programs contributing data for Turbidity

<i>ProgramID</i>	<i>N_Data</i>	<i>YearMin</i>	<i>YearMax</i>
5002	1070	1999	2024
103	22	2020	2021

**Program names:**

103 - EPA STOrage and RETrieval Data Warehouse (STORET)/WQX<sup>2</sup>

5002 - Florida STORET / WIN<sup>1</sup>

**Water Temperature - Discrete Water Quality**

**Seasonal Kendall-Tau Trend Analysis**

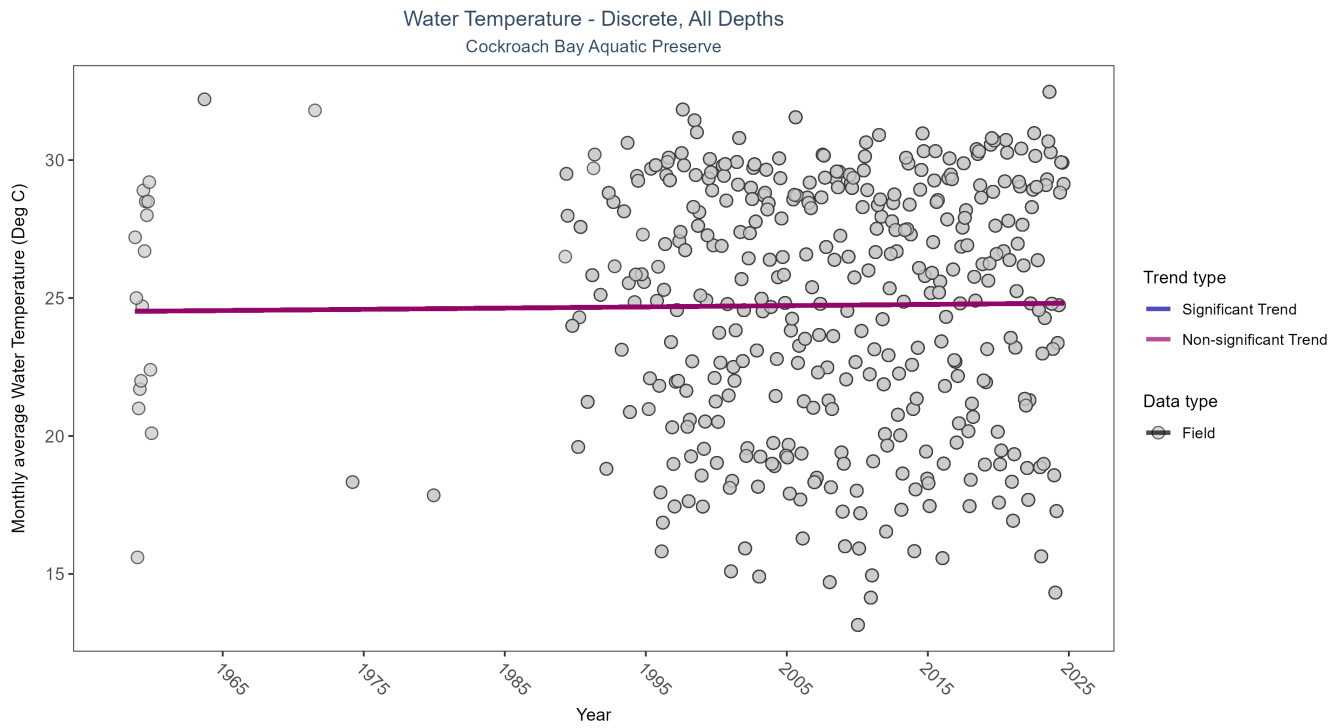


Figure 25: Seasonal Kendall-Tau Results for Water Temperature - Discrete

Table 30: Seasonal Kendall-Tau Trend Analysis for Water Temperature

RelativeDepth	N-Data	N-Years	Median	Independent	tau	p	SennSlope	SennIntercept	ChiSquared	pChiSquared	Trend
All	25295	42	26.5	TRUE	0.0212	0.5503	0.0045	24.5144	9.4908	0.5767	0

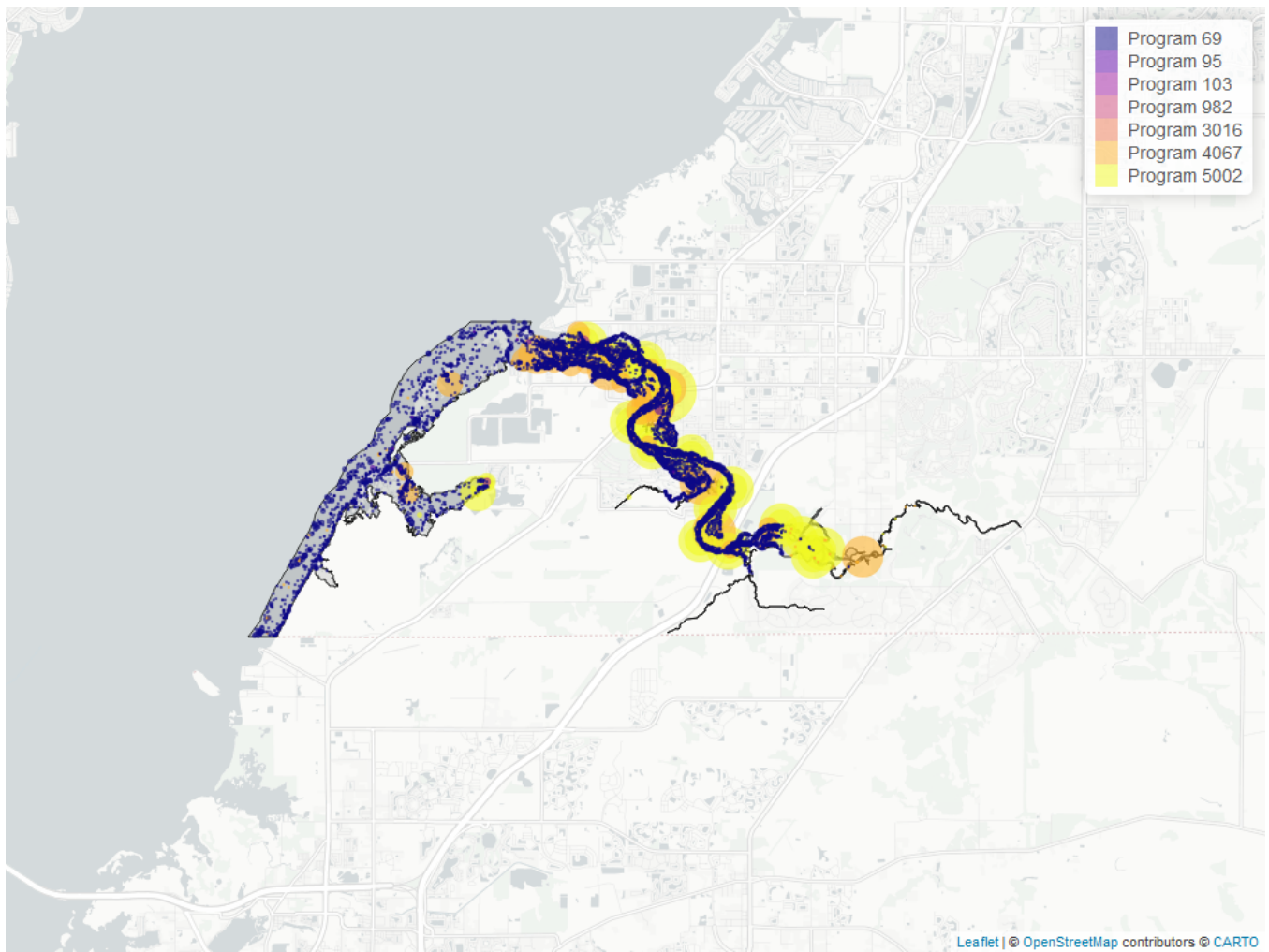


Figure 26: Map showing location of Discrete sampling sites for Water Temperature. The bubble size on the maps below reflect the amount of data available at each sampling site.

Table 31: Programs contributing data for Water Temperature

<i>ProgramID</i>	<i>N_Data</i>	<i>YearMin</i>	<i>YearMax</i>
69	14146	1989	2022
5002	7263	1999	2024
4067	3854	1993	2022
103	41	2020	2021
95	31	1958	2014

**Program names:**

69 - Fisheries-Independent Monitoring (FIM) Program<sup>4</sup>

95 - Harmful Algal Bloom Marine Observation Network<sup>5</sup>

103 - EPA STORage and RETrieval Data Warehouse (STORET)/WQX<sup>2</sup>

4067 - Tampa Bay Benthic Monitoring<sup>7</sup>

5002 - Florida STORET / WIN<sup>1</sup>



# Submerged Aquatic Vegetation

The data file used is: **All\_SAV\_Parameters-2024-Dec-08.txt**

**Submerged aquatic vegetation (SAV)** refers to plants and plant-like macroalgae species that live entirely underwater. The two primary categories of SAV inhabiting Florida estuaries are *benthic macroalgae* and *seagrasses*. They often grow together in dense beds or meadows that carpet the seafloor. *Macroalgae* include multicellular species of green, red and brown algae that often live attached to the substrate by a holdfast. They tend to grow quickly and can tolerate relatively high nutrient levels, making them a threat to seagrasses and other benthic habitats in areas with poor water quality. In contrast, *seagrasses* are grass-like, vascular, flowering plants that are attached to the seafloor by extensive root systems. *Seagrasses* occur throughout the coastal areas of Florida, including protected bays and lagoons as well as deeper offshore waters on the continental shelf. *Seagrasses* have taken advantage of the broad, shallow shelf and clear water to produce two of the most extensive seagrass beds anywhere in continental North America.

## Parameters

**Percent Cover** measures the fraction of an area of seafloor that is covered by SAV, usually estimated by evaluating multiple small areas of seafloor. Percent cover is often estimated for total SAV, individual types of vegetation (seagrass, attached algae, drift algae) and individual species.

**Frequency of Occurrence** was calculated as the number of times a taxon was observed in a year divided by the number of sampling events, multiplied by 100. Analysis is conducted at the quadrat level and is inclusive of all quadrats (i.e., quadrats evaluated using Braun-Blanquet, modified Braun-Blanquet, and percent cover.”

## Species

**Turtle grass** (*Thalassia testudinum*) is the largest of the Florida seagrasses, with longer, thicker blades and deeper root structures than any of the other seagrasses. It is considered a climax seagrass species.

**Shoal grass** (*Halodule wrightii*) is an early colonizer of vegetated areas and usually grows in water too shallow for other species except *widgeon grass*. It can often tolerate larger salinity ranges than other seagrass species. *Shoal grass* is characterized by thin, flat blades, that are narrower than *turtle grass* blades.

**Manatee grass** (*Syringodium filiforme*) is easily recognizable because its leaves are thin and cylindrical instead of the flat, ribbon-like form shared by many other seagrass species. The leaves can grow up to half a meter in length. *Manatee grass* is usually found in mixed seagrass beds or small, dense monospecific patches.

**Widgeon grass** (*Ruppia maritima*) grows in both fresh and salt water and is widely distributed throughout Florida’s estuaries in less saline areas, particularly in inlets along the east coast. This species resembles *shoal grass* in certain environments but can be identified by the pointed tips of its leaves.

Three species of *Halophila spp.* are found in Florida - **Star grass** (*Halophila engelmannii*), **Paddle grass** (*Halophila decipiens*), and **Johnson’s seagrass** (*Halophila johnsonii*). These are smaller, more fragile seagrasses than other Florida species and are considered ephemeral. They grow along a single long rhizome, with short blades. These species are not well-studied, although surveys are underway to define their ecological roles.

## Notes

*Star grass*, *Paddle grass*, and *Johnson’s seagrass* will be grouped together and listed as **Halophila spp.** in the following managed areas. This is because several surveys did not specify to the species level:

- Banana River Aquatic Preserve
- Indian River-Malabar to Vero Beach Aquatic Preserve
- Indian River-Vero Beach to Ft. Pierce Aquatic Preserve
- Jensen Beach to Jupiter Inlet Aquatic Preserve
- Loxahatchee River-Lake Worth Creek Aquatic Preserve
- Mosquito Lagoon Aquatic Preserve

- Biscayne Bay Aquatic Preserve
- Florida Keys National Marine Sanctuary

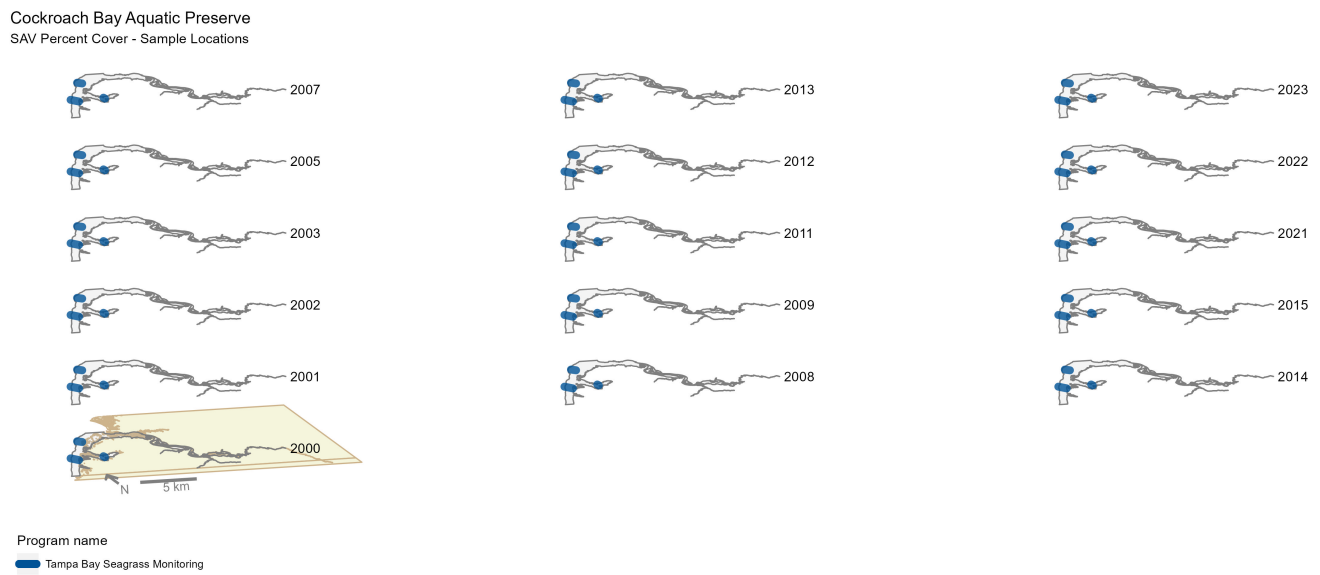


Figure 27: Maps showing the temporal scope of SAV sampling sites within the boundaries of *Cockroach Bay Aquatic Preserve* by Program name.

**Sampling locations by Program:**

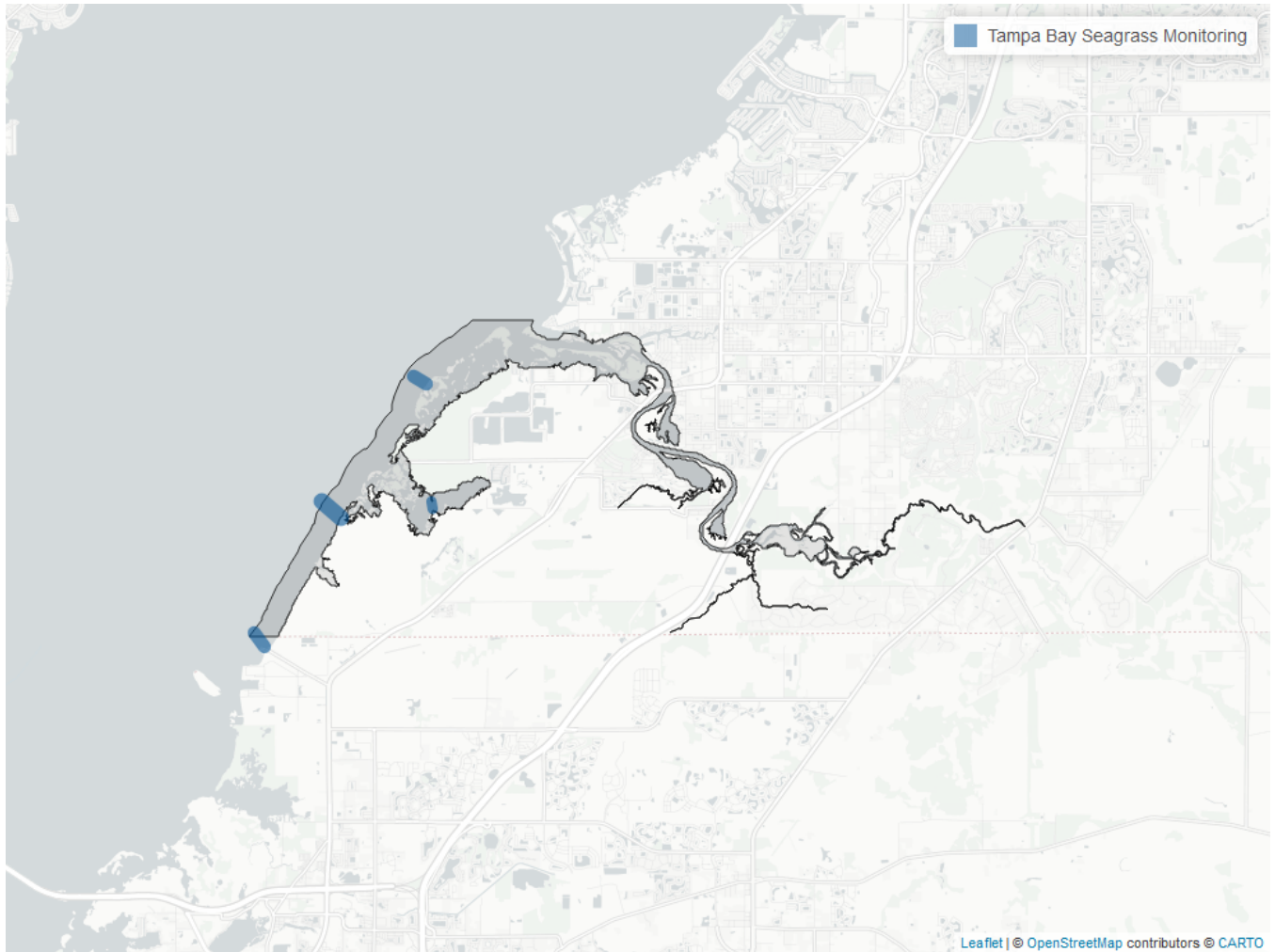


Figure 28: Map showing SAV sampling sites within the boundaries of *Cockroach Bay Aquatic Preserve*. The point size reflects the number of samples at a given sampling site.

Table 32: Tampa Bay Seagrass Monitoring - Program 565

<i>N-Data</i>	<i>YearMin</i>	<i>YearMax</i>	<i>method</i>	<i>Sample Locations</i>
1791	2000	2023	Braun Blanquet	4

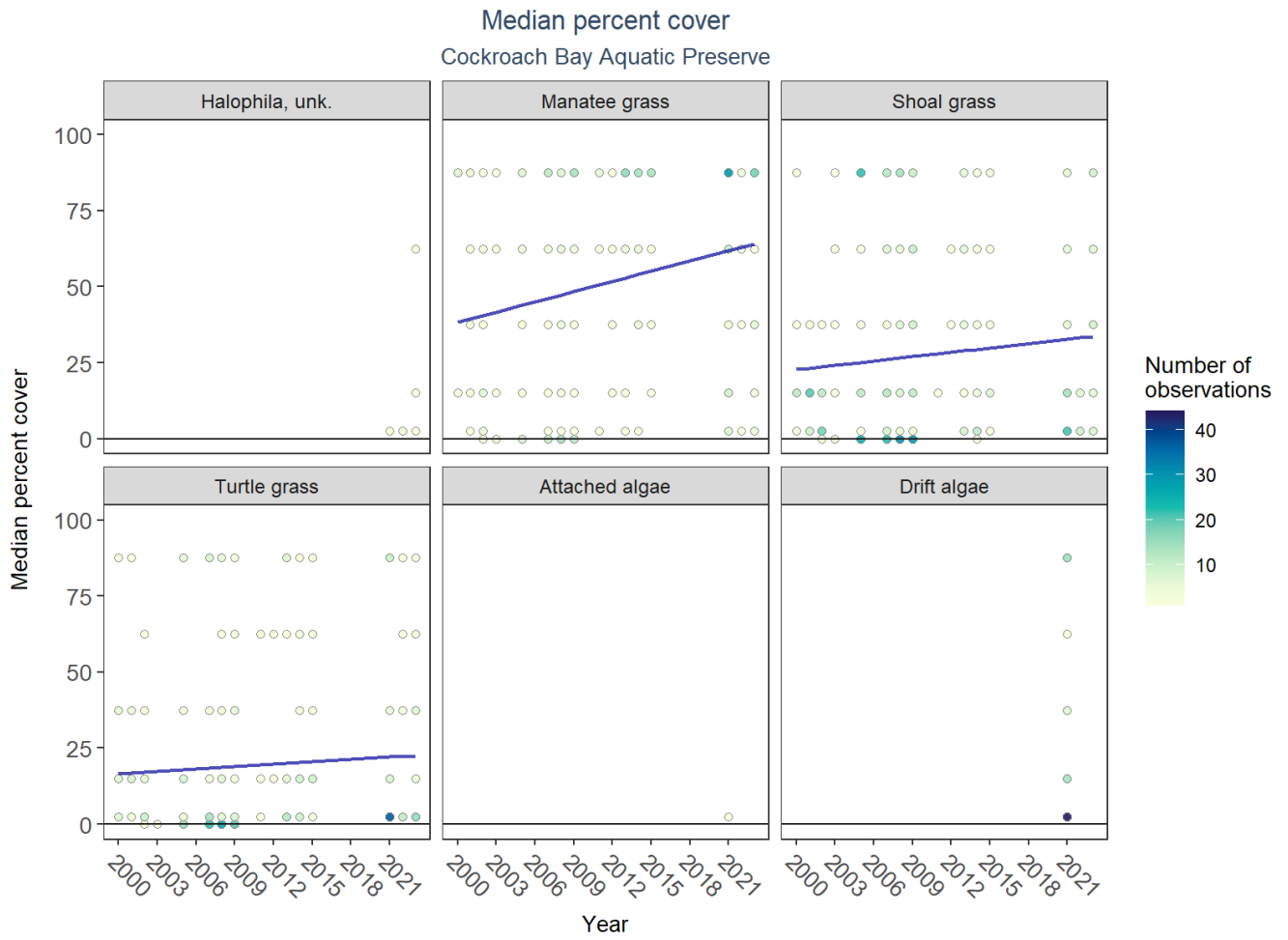


Figure 29: Trends in median percent cover for various seagrass species in Cockroach Bay Aquatic Preserve

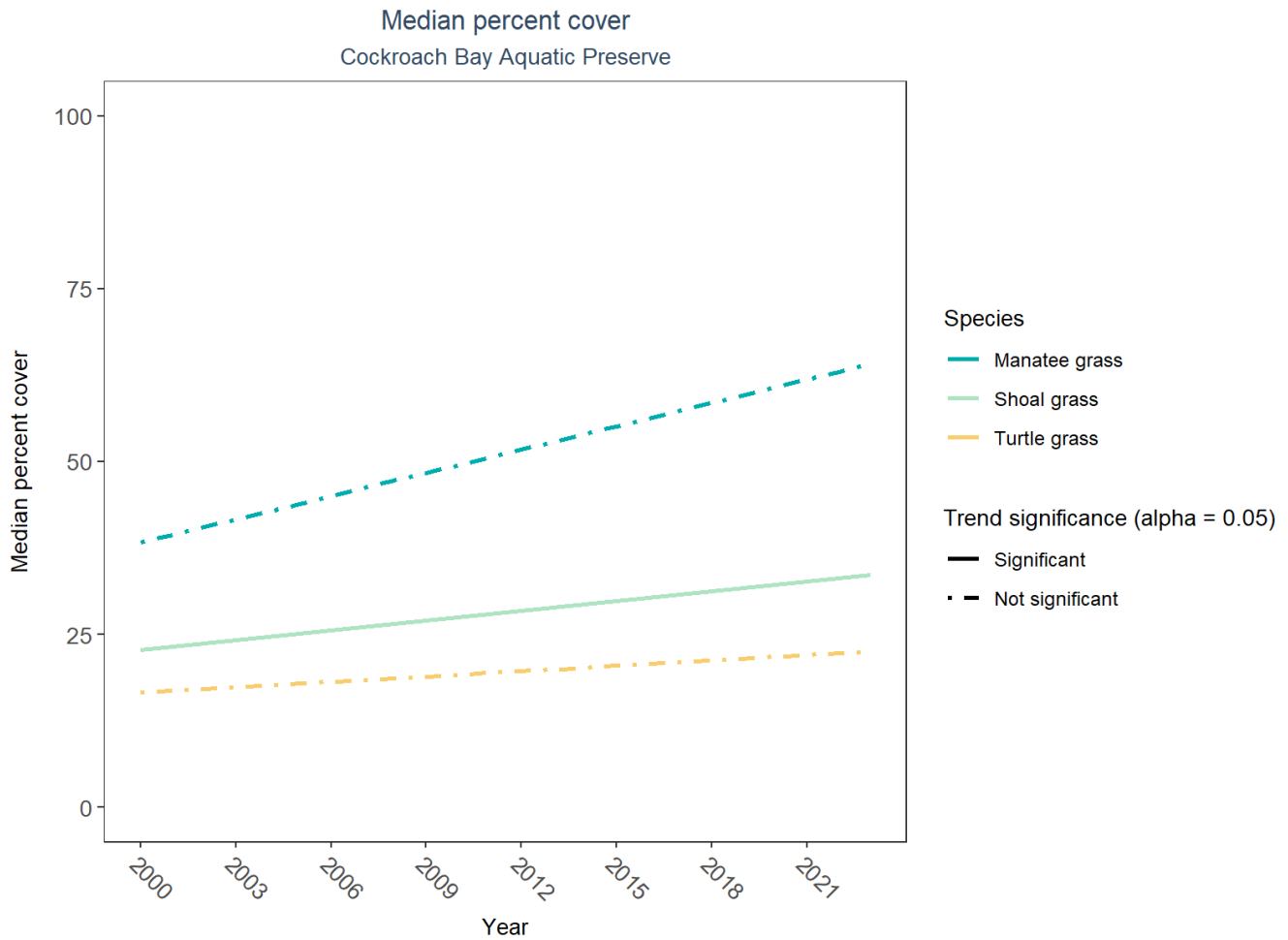


Figure 30: Trends in median percent cover for various seagrass species in Cockroach Bay Aquatic Preserve - simplified

Table 33: Percent Cover Trend Analysis for Cockroach Bay Aquatic Preserve

<i>CommonName</i>	<i>Trend Significance (0.05)</i>	<i>Period of Record</i>	<i>LME-Intercept</i>	<i>LME-Slope</i>	<i>p</i>
Attached algae	Insufficient data to calculate trend	-	-	-	-
Drift algae	Insufficient data to calculate trend	-	-	-	-
Shoal grass	Significantly increasing trend	2000 - 2023	19.90319	0.4741335	0.035961
No grass in quadrat	Model did not fit the available data	2000 - 2023	-	-	-
Manatee grass	No significant trend	2000 - 2023	31.54892	1.1222223	0.052395
Turtle grass	No significant trend	2000 - 2023	15.05201	0.2589580	0.210578
Halophila, unk.	Insufficient data to calculate trend	-	-	-	-

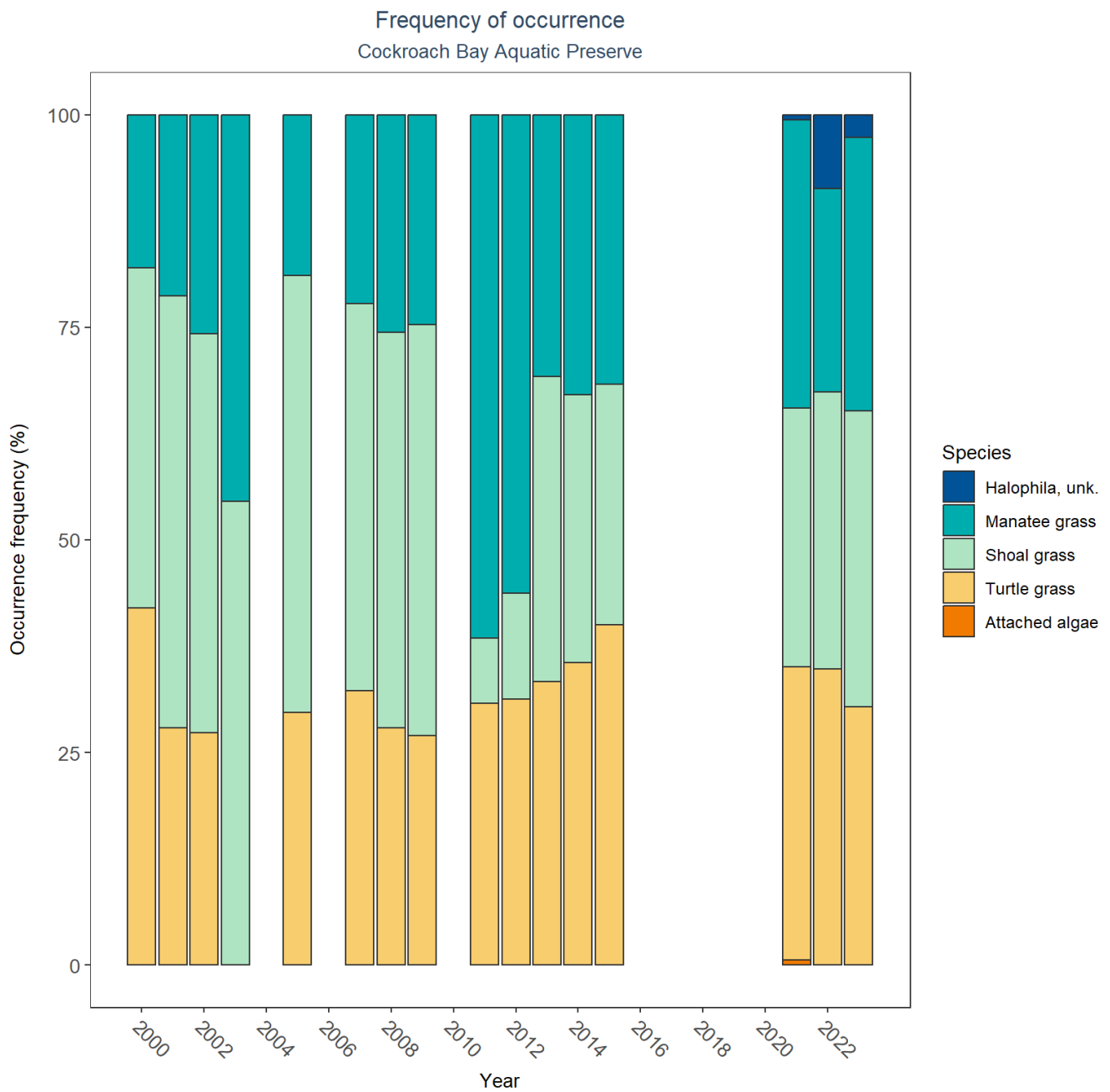


Figure 31: Frequency of occurrence for various seagrass species in Cockroach Bay Aquatic Preserve

# Nekton

The data file used is: All\_NEKTON\_Parameters-2024-Dec-17.txt

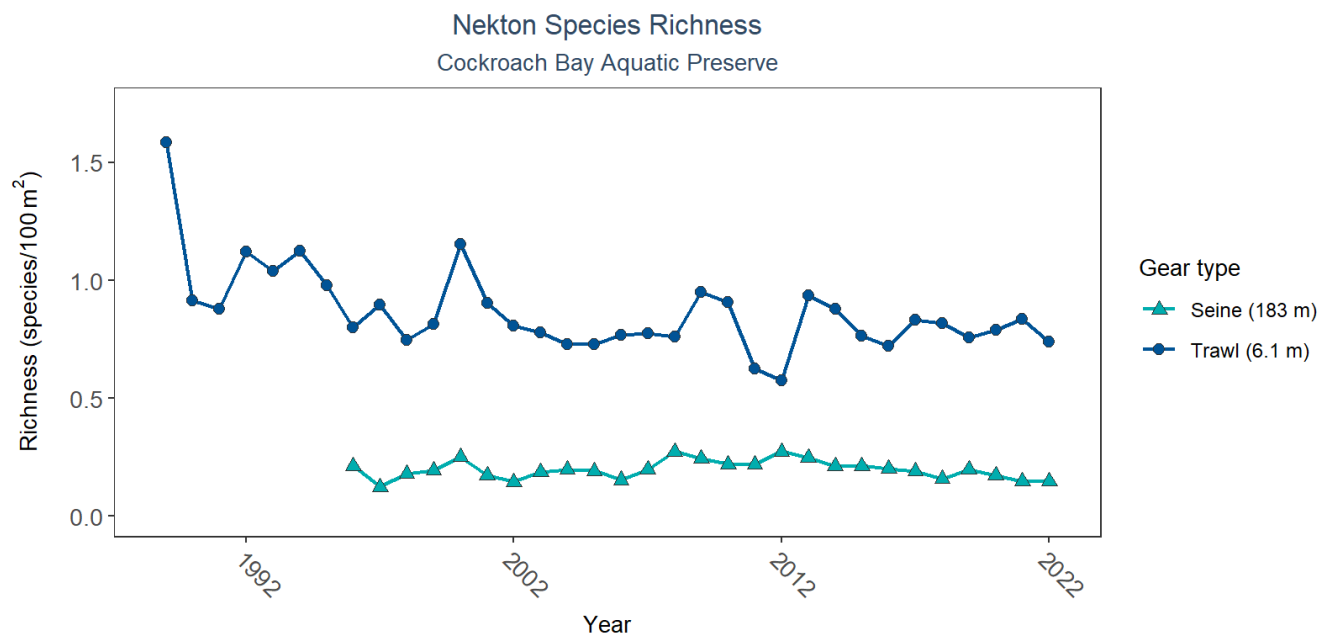


Figure 32: Figure for Nekton Species Richness in Cockroach Bay Aquatic Preserve

Table 34: Nekton Species Richness

<i>Gear Type</i>	<i>Sample Count</i>	<i>Number of Years</i>	<i>Period of Record</i>	<i>Median N of Taxa</i>	<i>Mean N of Taxa</i>
Trawl (6.1)	1741	34	1989 - 2022	0.75	0.82
Seine (183)	509	27	1996 - 2022	0.19	0.20

# Coastal Wetlands

The data file used is: All\_CW\_Parameters-2024-Dec-08.txt

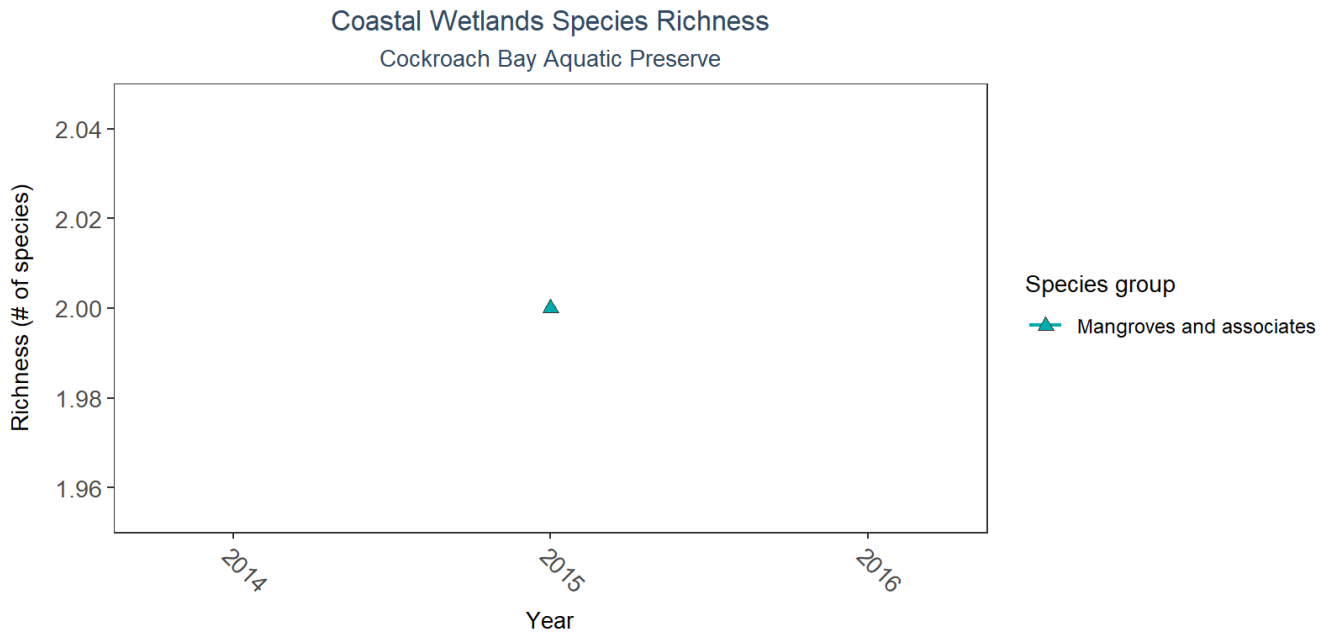


Figure 33: Figure for Coastal Wetlands Species Richness in Cockroach Bay Aquatic Preserve

Table 35: Coastal Wetlands Species Richness

<i>Species Group</i>	<i>Sample Count</i>	<i>Number of Years</i>	<i>Period of Record</i>	<i>Median N of Taxa</i>	<i>Mean N of Taxa</i>
Mangroves and associates	1	1	2015 - 2015	2	2



## References

1. Florida Department of Environmental Protection (DEP). [Florida STORET / WIN](#). (2024).
2. U.S. Environmental Protection Agency (EPA). [EPA STOrage and RETrieval Data Warehouse \(STORET\)/WQX](#). (2023).
3. University of Florida (UF); Institute of Food and Agricultural Sciences. [Florida LAKEWATCH Program](#). (2024).
4. Florida Fish and Wildlife Conservation Commission (FWC). [Fisheries-Independent Monitoring \(FIM\) Program](#). (2022).
5. Florida Fish and Wildlife Conservation Commission (FWC); Florida Fish and Wildlife Research Institute (FWRI). [Harmful Algal Bloom Marine Observation Network](#). (2018).
6. U.S. Environmental Protection Agency (EPA); Office of Water; National Oceanic and Atmospheric Administration (NOAA); U.S. Geological Survey (USGS); U.S. Fish and Wildlife Service (USFWS); National Estuary Program (NEP); coastal states. [National Aquatic Resource Surveys, National Coastal Condition Assessment](#). (2021).
7. Tampa Bay Estuary Program. [Tampa Bay Benthic Monitoring](#). (2022).